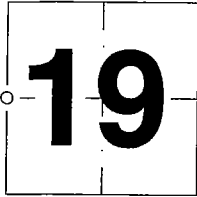


CORNER RECORD

DOCUMENT NO. CL 8-100CL-08-100CITY OF MANTECA, COUNTY OF SAN JOAQUIN, CALIFORNIABrief Legal Description: THE WEST 1/4 CORNER OF SECTION 19, T. 1 S., R. 7 E., M.D.B. & M.**CORNER TYPE**

Government Corner ☒ Control ☐
Meander ☐ Property ☐
Rancho ☐ Other ☐
Date of Survey: 5 JUNE 2007

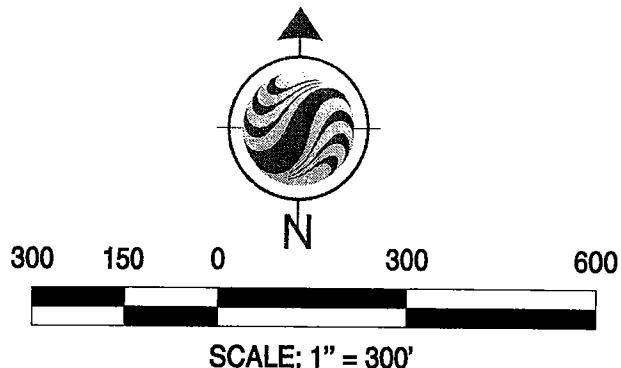
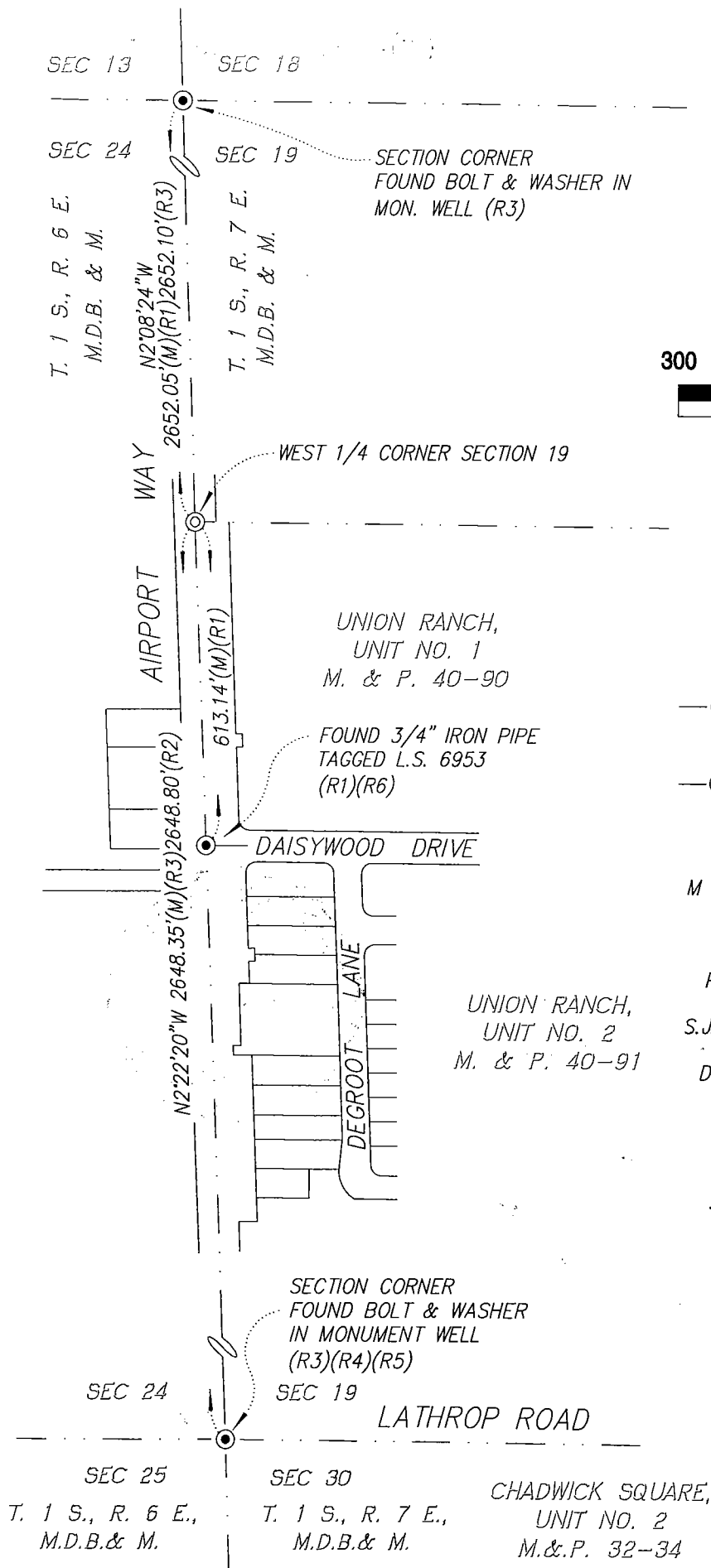
COORDINATES (Optional)

N. _____
E. _____
Zone NAD27 ☐ NAD83 ☐
NAD83 Epoch _____
Elev. _____
Vert. Datum: NAVD29 ☐ NAVD88 ☐
Meas. Units: Metric ☐ Imperial ☐

Corner: Left as Found ☐ Found and Tagged ☐ Established ☐ Reestablished ☒ Rebuilt ☐Identification and type of corner found: Evidence used to identify or procedure used to establish or reestablish the corner:
Re-established corner using existing monumentation and record mapping.See legend on Page 2 of 2

A description of the physical condition of the monument found and as set or reset.

Set 3/4" x 24" long iron pipe with plastic cap tagged L.S. 5922 in monument well to replace monument destroyed during construction.**SURVEYOR'S STATEMENT**This corner record was prepared by me or under my direction in conformance with
the Land Surveyor's Act on MARCH 10, 2008.Signed [Signature] L.S. or R.C.E. Number 5922**COUNTY SURVEYOR'S STATEMENT**This Corner Record was received MARCH 11, 2008 and examined
and filed MARCH 17, 2008.Signed [Signature] L.S. or R.C.E. Number 4440Title Assistant County SurveyorCounty Surveyor's Comment(s): This corner record is not in compliance
with board rule 464(c) regarding submittal within 90 days from
the date of survey.



LEGEND:

- FOUND 3/4" IRON PIPE TAGGED L.S. 6953
IN MONUMENT WELL (R1) OR
AS NOTED.
- SET 3/4" IRON PIPE TAGGED L.S. 5922
IN MONUMENT WELL OR
AS NOTED.
- M & P MAPS & PLATS
- S RECORD OF SURVEY
- PM PARCEL MAP
- S.J.C.R. SAN JOAQUIN COUNTY RECORDS
- D.N. DOCUMENT NUMBER

REFERENCES:

- (R1) "UNION RANCH, UNIT NO. 1",
40-M & P-90, S.J.C.R.
- (R2) 8-S-154, S.J.C.R.
- (R3) 17-PM-14, S.J.C.R.
- (R4) 33-S-133, S.J.C.R.
- (R5) CHADWICK SQUARE UNIT NO. 2
32-M & P-34, S.J.C.R.
- (R6) CERTIFICATE OF CORRECTION
D.N. 2008-005951, S.J.C.R.