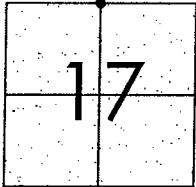


CORNER RECORD

Document Number CR-08-93

County of San Joaquin, California

Brief Legal Description BAKER ROAD NORTH QUARTER CORNER SECTION 17



T2N R8E

CORNER TYPE

Government Corner ☒ Control ☐

Meander ☐ Property ☐

Rancho ☐ Other ☐

Date of Survey January 30, 2008

COORDINATES (Optional)

N. _____

F. _____

Zone _____ NAD27 ☐ NAD83 ☐

NAD83 Epoch _____

Elev. _____

Vert. Datum: NGVD29 ☐ NAVD88 ☐

Meas. Units: Metric ☐ Imperial ☒

Corner - Left as found ☒ Found and tagged ☐ Established ☐ Reestablished ☐ Rebuilt ☐

Identification and type of corner found: Evidence used to identify or procedure used to establish or reestablish the corner:
SEE SKETCH ON BACKSIDE.

A description of the physical condition of the monument as found and as set or reset: _____

SEE SKETCH ON BACKSIDE.

SURVEYOR'S STATEMENT

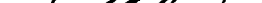
This Corner Record was prepared by me or under my direction in conformance with the Land Surveyors' Act on March 11, 2008.

Signed Manuel Deloio R.C.E. Number C30890



COUNTY SURVEYOR'S STATEMENT

This Corner Record was received MARCH 12, 2008 and examined and filed MARCH 17, 2008.

Signed  P.L.S. No. 4440

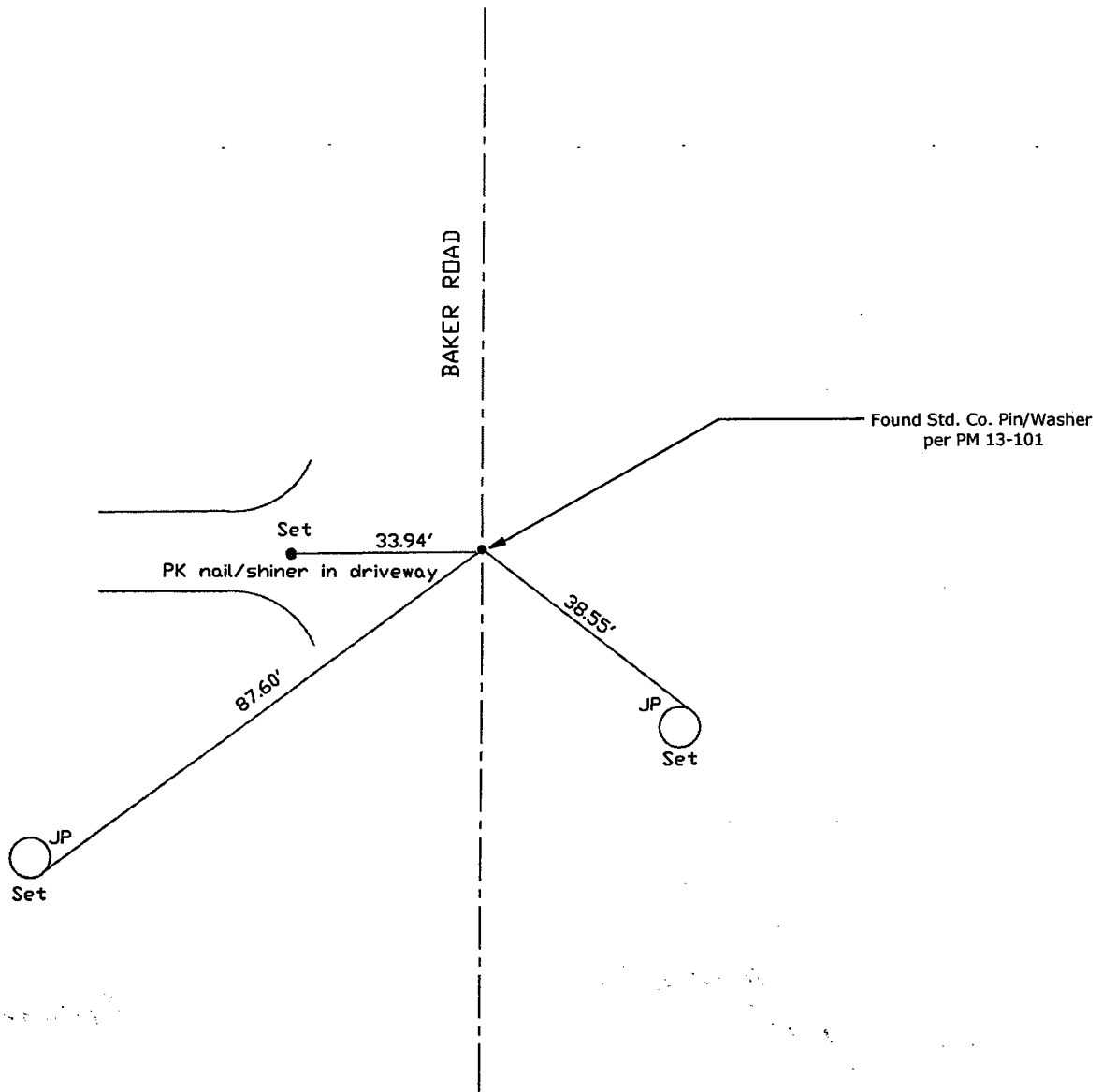
Title Assistant County Surveyor

County Surveyor's Comment





N.T.S.



Note: Found Monuments are not tagged unless otherwise noted.

"No Attempt Was Made to Verify the Monument(s)"

FP=Fence Post
GP=Guy Post
JP=Joint Pole
PP=Power Pole
SP=Service Pole
TP=Telephone Pole
S.F.N=Searched Found Nothing
N.T.S.=Not To Scale
Set=Conc. Nail with Brass Washer Stamped
"S.J. Co.", unless otherwise noted

Note: Set Ties are Brass Washers
Stamped "S.J.Co. PUBLIC WORKS"