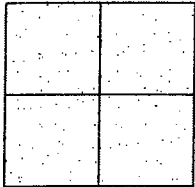


CORNER RECORD

Document Number CR-08-90
County of San Joaquin, California

City of

Brief Legal Description BAKER ROAD 1336'+/- EAST OF SOUTH 1/4 CORNER SECTION 7,
TOWNSHIP 2 NORTH, RANGE 8 EAST



CORNER TYPE

Government Corner ☐ Control ☐
Meander ☐ Property ☐
Rancho ☐ Other ☒
Date of Survey January 30, 2008

COORDINATES (Optional)

N.
E.
Zone NAD27 ☐ NAD83 ☐
NAD83 Epoch
Elev.
Vert. Datum: NGVD29 ☐ NAVD88 ☐
Meas. Units: Metric ☐ Imperial ☒

Corner - Left as found ☒ Found and tagged ☐ Established ☐ Reestablished ☐ Rebuilt ☐

Identification and type of corner found: Evidence used to identify or procedure used to establish or reestablish the corner:
SEE SKETCH ON BACKSIDE.

A description of the physical condition of the monument as found and as set or reset:
SEE SKETCH ON BACKSIDE.

SURVEYOR'S STATEMENT

This Corner Record was prepared by me or under my direction in conformance with
the Land Surveyors' Act on March 11, 2008.

Signed Manuel Solorio R.C.E. Number C30890

COUNTY SURVEYOR'S STATEMENT

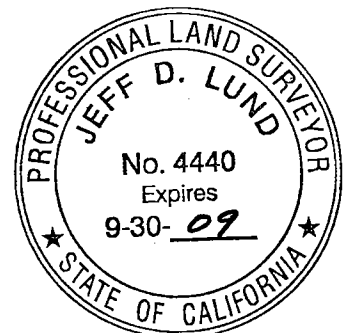
This Corner Record was received MARCH 12, 2008 and examined
and filed MARCH 17, 2008.

Signed Jeff Lund P.L.S. No. 4440
Title Assistant County Surveyor

County Surveyor's Comment

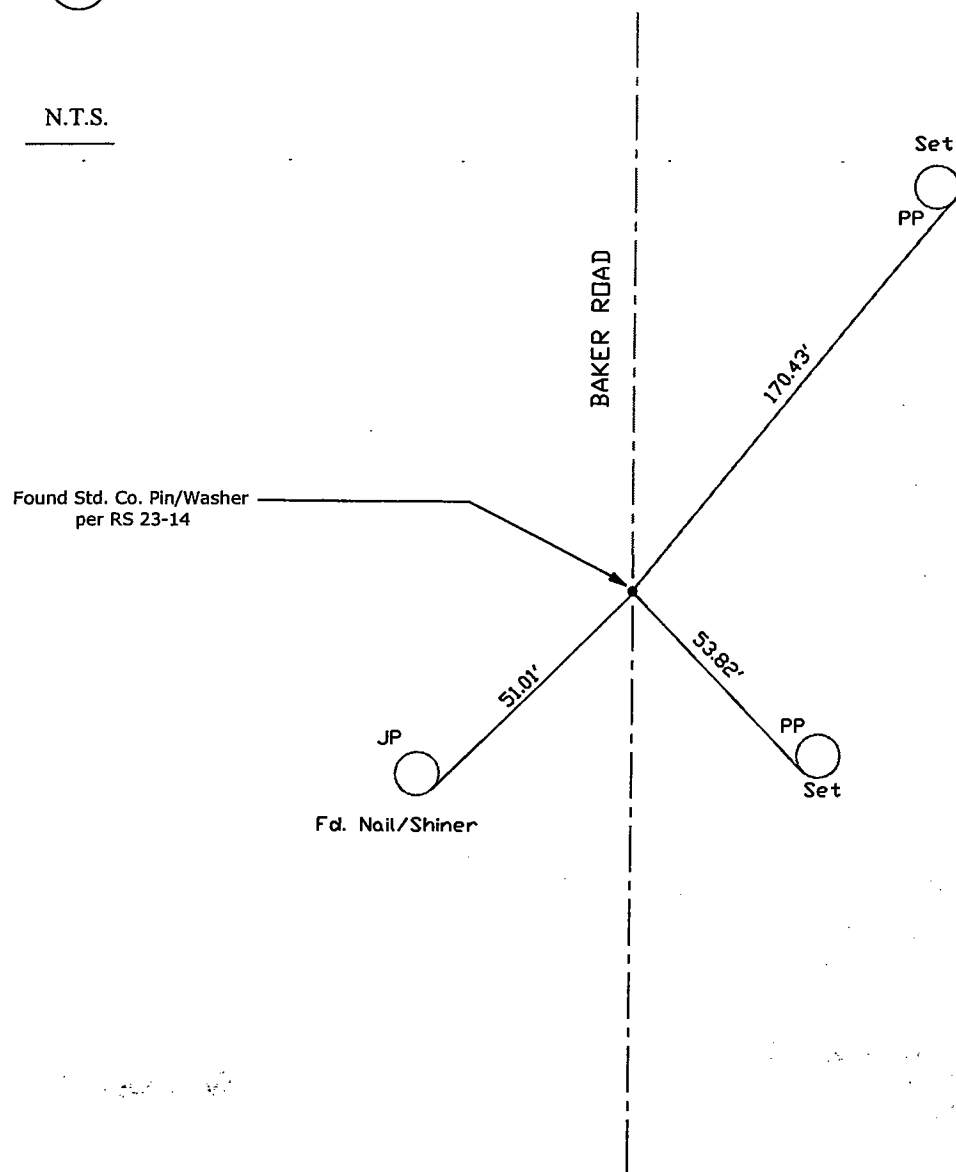


Manuel Solorio





N.T.S.



Note: Found Monuments are not tagged
unless otherwise noted.

"No Attempt Was Made to Verify the Monument(s)"

FP=Fence Post
GP=Guy Post
JP=Joint Pole
PP=Power Pole
SP=Service Pole
TP=Telephone Pole
S.F.N=Searched Found Nothing
N.T.S.=Not To Scale
Set=Conc. Nail with Brass Washer Stamped
"S.J. Co.", unless otherwise noted

Note: Set Ties are Brass Washers
Stamped "S.J.Co. PUBLIC WORKS"