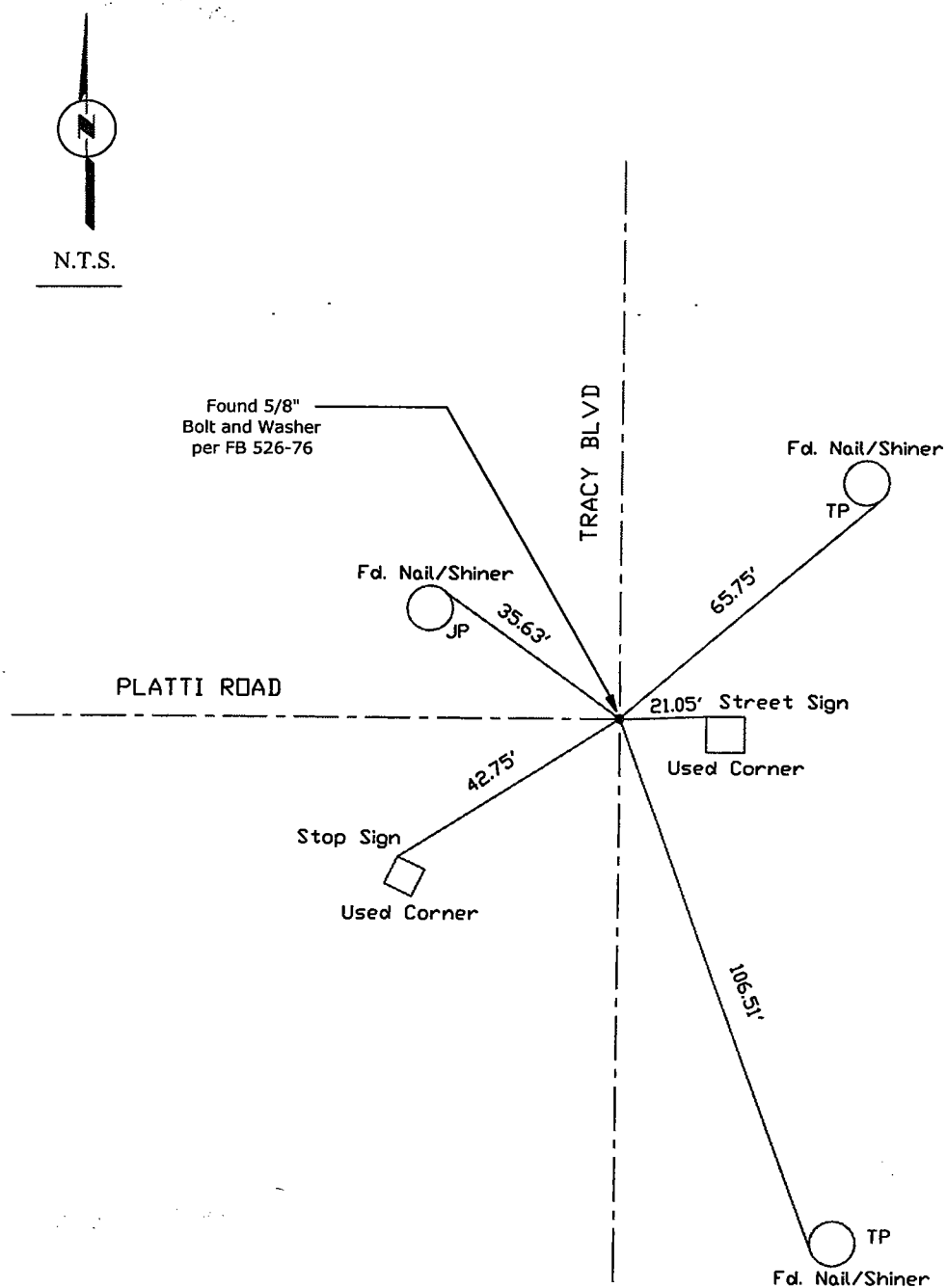


CORNER RECORD

Document Number CR-08-88
County of San Joaquin, California

Brief Legal Description TRACY BLVD @ PLATTI ROAD



Note: Found Monuments are not tagged unless otherwise noted.

"No Attempt Was Made to Verify the Monument(s)"

FP=Fence Post
 GP=Guy Post
 JP=Joint Pole
 PP=Power Pole
 SP=Service Pole
 TP=Telephone Pole
 S.F.N=Searched Found Nothing
 N.T.S.=Not To Scale
 Set=Conc. Nail with Brass Washer Stamped
 "S.J. Co.", unless otherwise noted

Note: Set Ties are Brass Washers
 Stamped "S.J.Co. PUBLIC WORKS"