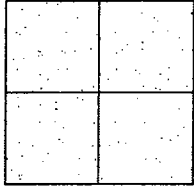


CORNER RECORD

Document Number CR08-87
County of San Joaquin, California

City of
Brief Legal Description FRENCH CAMP ROAD @ LODUCA DRIVE



CORNER TYPE

Government Corner ☐ Control ☐
Meander ☐ Property ☐
Rancho ☐ Other ☒
Date of Survey February 11, 2008

COORDINATES (Optional)

N.
E.
Zone NAD27 ☐ NAD83 ☐
NAD83 Epoch
Elev.
Vert. Datum: NGVD29 ☐ NAVD88 ☐
Meas. Units: Metric ☐ Imperial ☒

Corner - Left as found ☒ Found and tagged ☐ Established ☐ Reestablished ☐ Rebuilt ☐

Identification and type of corner found: Evidence used to identify or procedure used to establish or reestablish the corner:
SEE SKETCH ON BACKSIDE.

A description of the physical condition of the monument as found and as set or reset:
SEE SKETCH ON BACKSIDE.

SURVEYOR'S STATEMENT

This Corner Record was prepared by me or under my direction in conformance with
the Land Surveyors' Act on March 4, 2008.

Signed Manuel Solorio R.C.E. Number C30890



Manuel Solorio

COUNTY SURVEYOR'S STATEMENT

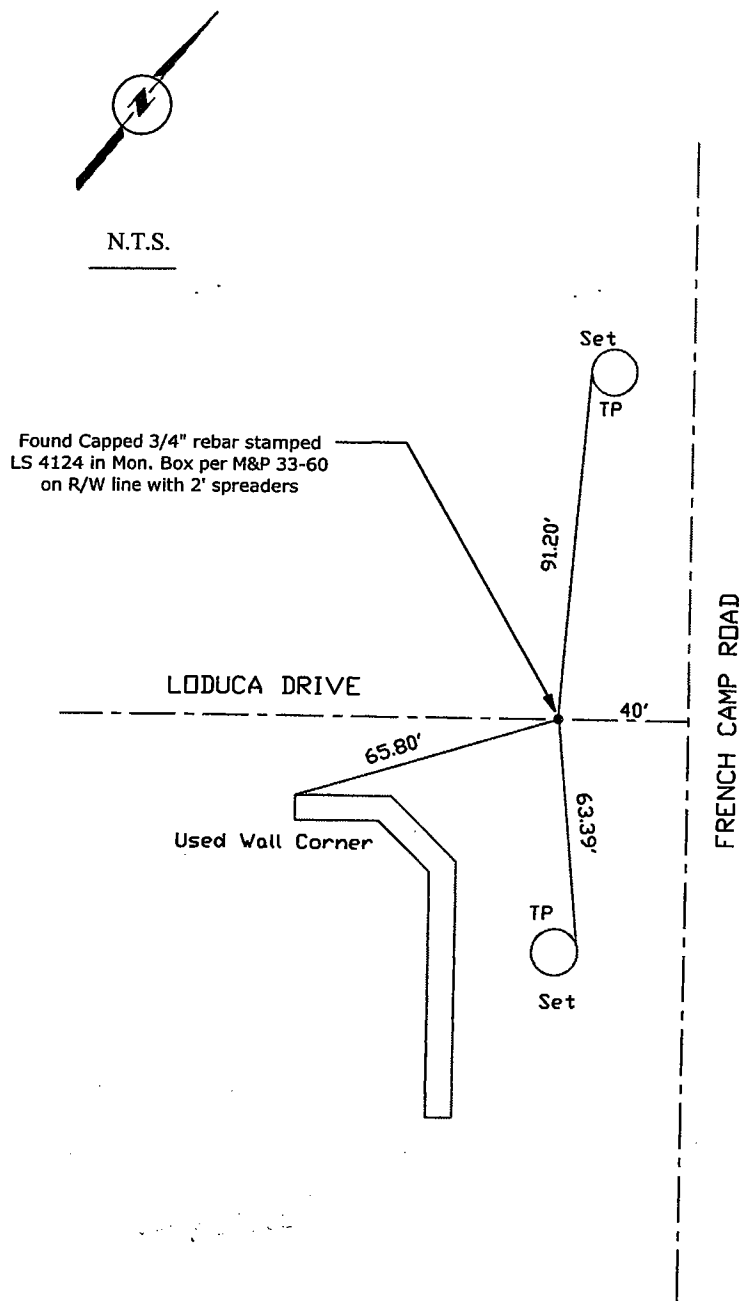
This Corner Record was received MARCH 5, 2008 and examined
and filed MARCH 10, 2008

Signed Jeff Lund P.L.S. No. 4440

Title Assistant County Surveyor



County Surveyor's Comment



Note: Found Monuments are not tagged unless otherwise noted.

"No Attempt Was Made to Verify the Monument(s)"

FP=Fence Post
 GP=Guy Post
 JP=Joint Pole
 PP=Power Pole
 SP=Service Pole
 TP=Telephone Pole
 S.F.N=Searched Found Nothing
 N.T.S.=Not To Scale
 Set=Conc. Nail with Brass Washer Stamped "S.J. Co.", unless otherwise noted

Note: Set Ties are Brass Washers Stamped "S.J.Co. PUBLIC WORKS"