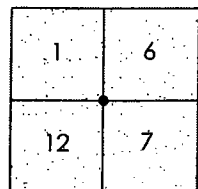


CORNER RECORD

Document Number CR-08-78
County of San Joaquin, California

City of _____
Brief Legal Description JACK TONE ROAD SW CORNER SECTION 6



T1N R7E T1N R8E

CORNER TYPE

Government Corner ☒ Control ☐
Meander ☐ Property ☐
Rancho ☐ Other ☐

Date of Survey June 16, 2005

COORDINATES (Optional)

N. _____
E. _____
Zone _____ NAD27 ☐ NAD83 ☐
NAD83 Epoch _____
Elev. _____
Vert. Datum: NGVD29 ☐ NAVD88 ☐
Meas. Units: Metric ☐ Imperial ☒

Corner - Left as found ☒ Found and tagged ☐ Established ☐ Reestablished ☐ Rebuilt ☐

Identification and type of corner found: Evidence used to identify or procedure used to establish or reestablish the corner:
SEE SKETCH ON BACKSIDE.

A description of the physical condition of the monument as found and as set or reset: _____
SEE SKETCH ON BACKSIDE.

SURVEYOR'S STATEMENT

This Corner Record was prepared by me or under my direction in conformance with
the Land Surveyors' Act on Feb. 14, 2008.

Signed Manuel Solario R.C.E. Number C30890



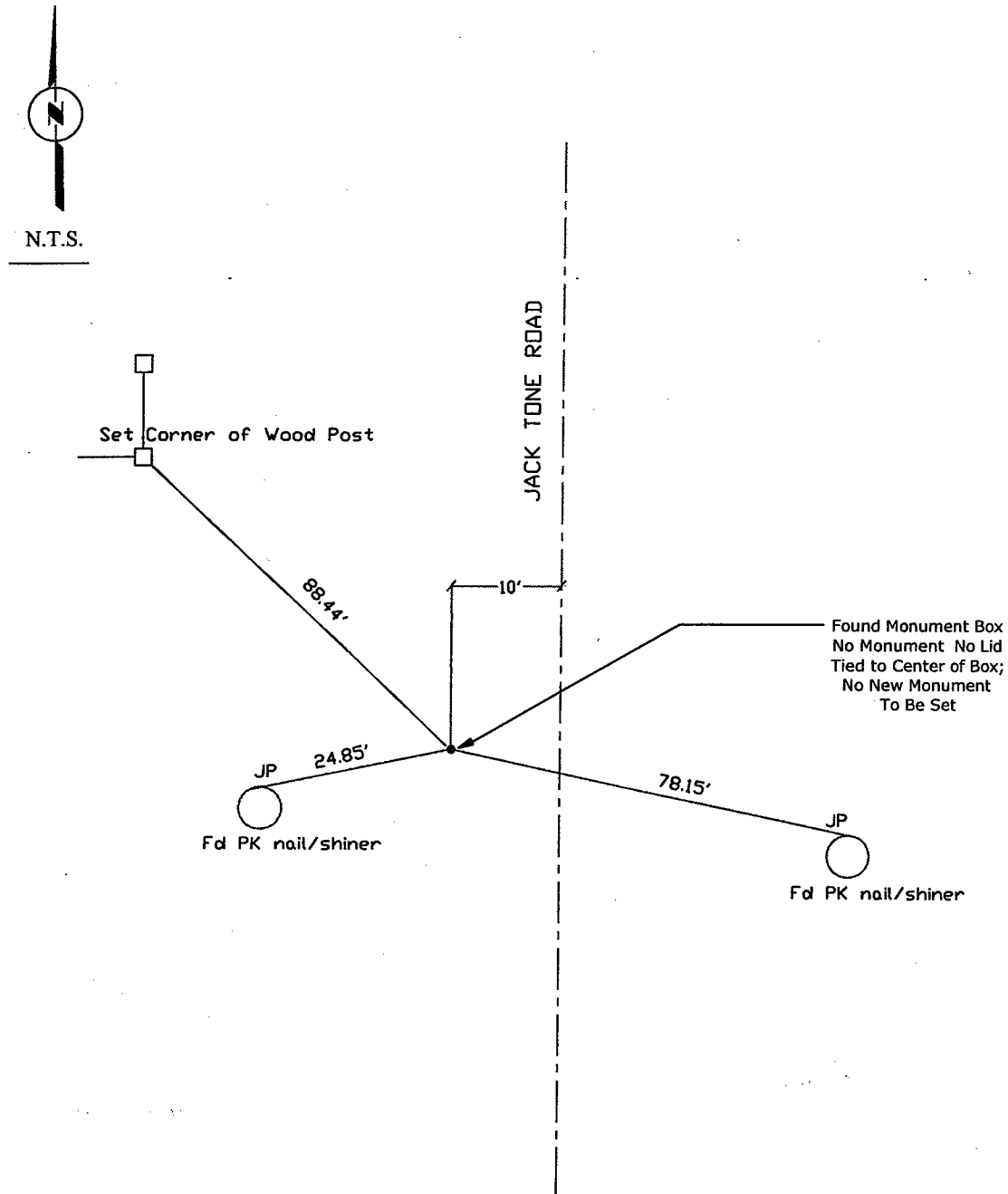
COUNTY SURVEYOR'S STATEMENT

This Corner Record was received Feb. 15, 2008 and examined
and filed Feb. 19, 2008.

Signed Jeff D. Lund P.L.S. No. 4440
Title Assistant County Surveyor



County Surveyor's Comment _____
THIS CORNER RECORD IS NOT IN COMPLIANCE WITH BOARD RULE 464(c)
REGARDING SUBMITTAL WITHIN 90 DAYS FROM THE DATE OF SURVEY.



Note: Found Monuments are not tagged unless otherwise noted.

"No Attempt Was Made to Verify the Monument(s)"

FP=Fence Post
 GP=Guy Post
 JP=Joint Pole
 PP=Power Pole
 SP=Service Pole
 TP=Telephone Pole
 S.F.N=Searched Found Nothing
 N.T.S.=Not To Scale
 Set=Conc. Nail with Brass Washer Stamped
 "S.J. Co.", unless otherwise noted

Note: Set Ties are Brass Washers
 Stamped "S.J.Co. PUBLIC WORKS"