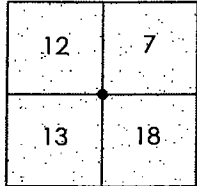


# CORNER RECORD

Document Number CR-08-76  
 County of San Joaquin, California

City of \_\_\_\_\_  
 Brief Legal Description JACK TONE ROAD SW CORNER SECTION 7



T1N R7E T1N R8E

## CORNER TYPE

Government Corner ☒ Control ☐  
 Meander ☐ Property ☐  
 Rancho ☐ Other ☐  
 Date of Survey June 16, 2005

## COORDINATES (Optional)

N. \_\_\_\_\_  
 E. \_\_\_\_\_  
 Zone \_\_\_\_\_ NAD27 ☐ NAD83 ☐  
 NAD83 Epoch \_\_\_\_\_  
 Elev. \_\_\_\_\_  
 Vert. Datum: NGVD29 ☐ NAVD88 ☐  
 Meas. Units: Metric ☐ Imperial ☒

Corner - Left as found ☒ Found and tagged ☐ Established ☐ Reestablished ☐ Rebuilt ☐

Identification and type of corner found: Evidence used to identify or procedure used to establish or reestablish the corner:  
SEE SKETCH ON BACKSIDE.

A description of the physical condition of the monument as found and as set or reset:  
SEE SKETCH ON BACKSIDE.

## SURVEYOR'S STATEMENT

This Corner Record was prepared by me or under my direction in conformance with the Land Surveyors' Act on Feb. 14, 2008.

Signed Manuel Solorio R.C.E. Number C30890

## COUNTY SURVEYOR'S STATEMENT

This Corner Record was received Feb. 15, 2008 and examined and filed Feb. 19, 2008.

Signed Jeff D. Lund P.L.S. No. 4440  
 Title Assistant County Surveyor

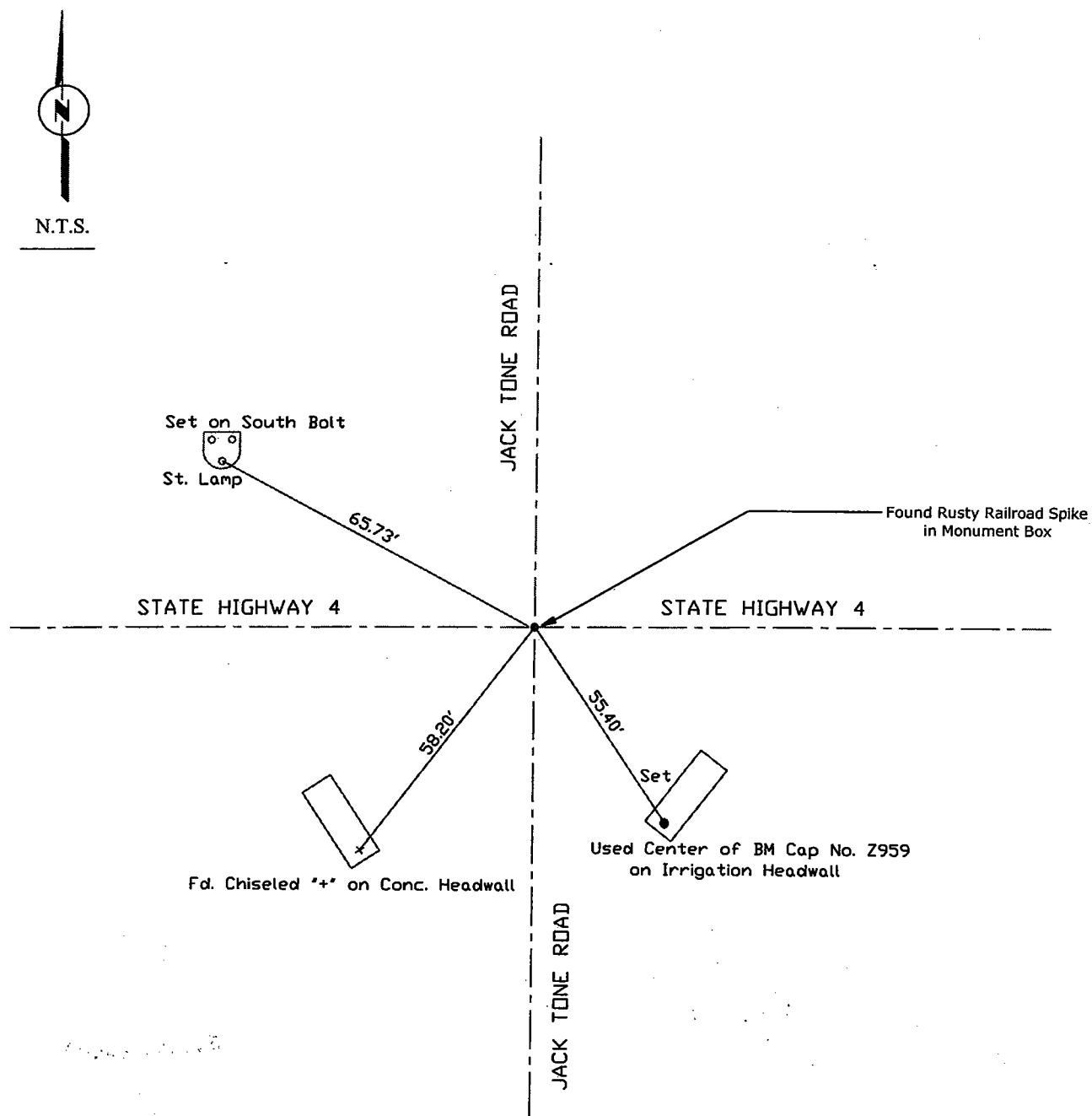
County Surveyor's Comment \_\_\_\_\_

THIS CORNER RECORD IS NOT IN COMPLIANCE WITH BOARD RULE 464(c)  
REGARDING SUBMITTAL WITHIN 90 DAYS FROM THE DATE OF SURVEY.



Manuel Solorio





Note: Found Monuments are not tagged unless otherwise noted.

"No Attempt Was Made to Verify the Monument(s)"

FP=Fence Post  
 GP=Guy Post  
 JP=Joint Pole  
 PP=Power Pole  
 SP=Service Pole  
 TP=Telephone Pole  
 S.F.N=Searched Found Nothing  
 N.T.S.=Not To Scale  
 Set=Conc. Nail with Brass Washer Stamped  
 "S.J. Co.", unless otherwise noted

Note: Set Ties are Brass Washers  
 Stamped "S.J.Co. PUBLIC WORKS"