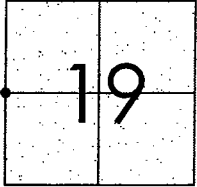


# CORNER RECORD

Document Number CR-08-73  
City of \_\_\_\_\_ County of San Joaquin, California

Brief Legal Description JACK TONE ROAD WEST 1/4 CORNER SECTION 19



TIN R8E

## CORNER TYPE

Government Corner ☒ Control ☐  
Meander ☐ Property ☐  
Rancho ☐ Other ☐  
Date of Survey June 17, 2005

## COORDINATES (Optional)

N. \_\_\_\_\_  
E. \_\_\_\_\_  
Zone \_\_\_\_\_ NAD27 ☐ NAD83 ☐  
NAD83 Epoch \_\_\_\_\_  
Elev. \_\_\_\_\_  
Vert. Datum: NGVD29 ☐ NAVD88 ☐  
Meas. Units: Metric ☐ Imperial ☒

Corner - Left as found ☒ Found and tagged ☐ Established ☐ Reestablished ☐ Rebuilt ☐

Identification and type of corner found: Evidence used to identify or procedure used to establish or reestablish the corner:  
SEE SKETCH ON BACKSIDE.

A description of the physical condition of the monument as found and as set or reset:  
SEE SKETCH ON BACKSIDE.

## SURVEYOR'S STATEMENT

This Corner Record was prepared by me or under my direction in conformance with the Land Surveyors' Act on Feb. 14, 2008.

Signed Manuel Solario R.C.E. Number C30890

## COUNTY SURVEYOR'S STATEMENT

This Corner Record was received Feb. 15, 2008 and examined and filed Feb. 19, 2008.

Signed Jeff D. Lund P.L.S. No. 4440  
Title Assistant County Surveyor

County Surveyor's Comment \_\_\_\_\_  
THIS CORNER RECORD IS NOT IN COMPLIANCE WITH BOARD RULE 464(c)  
REGARDING SUBMITTAL WITHIN 90 DAYS FROM THE DATE OF SURVEY.



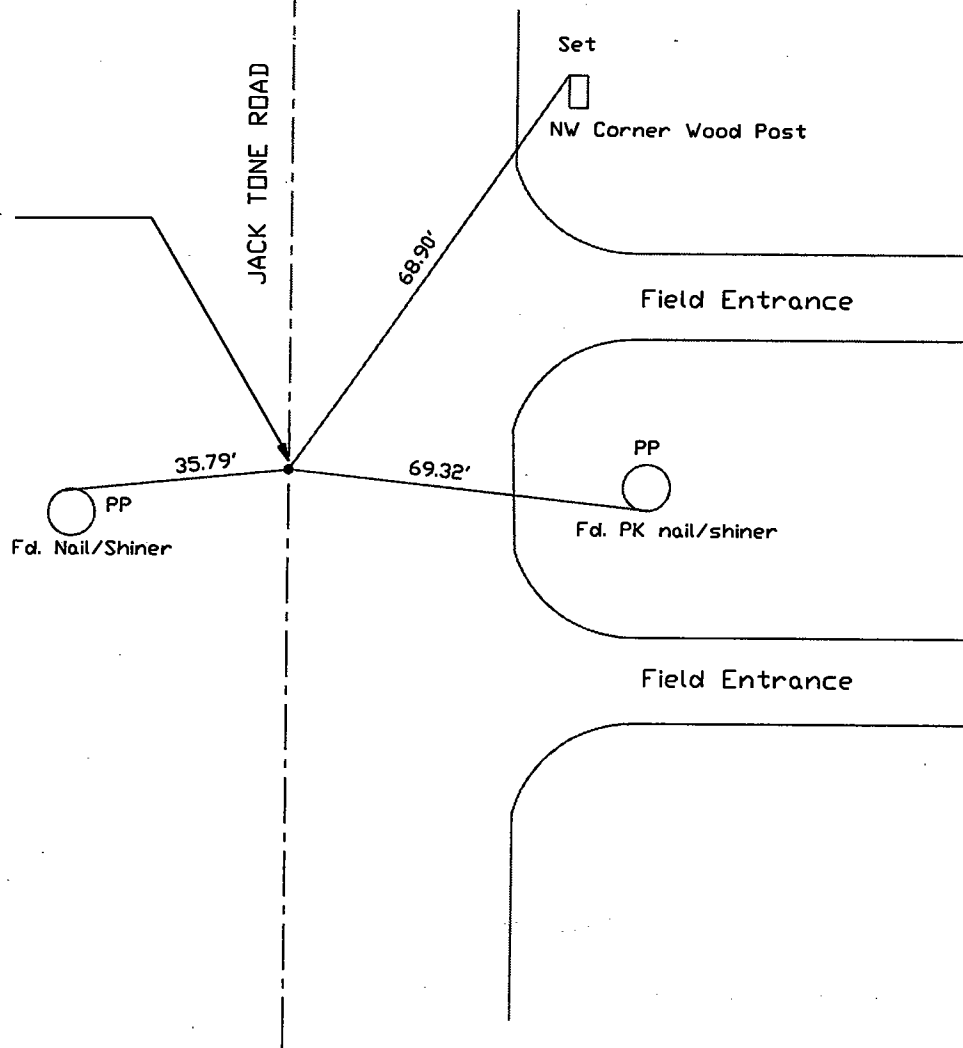
Manuel Solario





N.T.S.

Found Rusty Bolt and Washer  
in Monument Box  
No Lid



Note: Found Monuments are not tagged  
unless otherwise noted.

"No Attempt Was Made to Verify the Monument(s)"

FP=Fence Post  
GP=Guy Post  
JP=Joint Pole  
PP=Power Pole  
SP=Service Pole  
TP=Telephone Pole  
S.F.N=Searched Found Nothing  
N.T.S.=Not To Scale  
Set=Conc. Nail with Brass Washer Stamped  
"S.J. Co.", unless otherwise noted

Note: Set Ties are Brass Washers  
Stamped "S.J. Co. PUBLIC WORKS"