

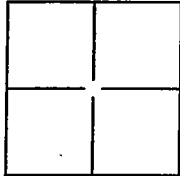
CORNER RECORD

Document Number 02-08-56
County of SAN JOAQUIN, California

City of RIPON

Brief Legal Description SITUATE IN THE NORTHWEST QUARTER OF SECTION 30, TOWNSHIP 2 SOUTH, RANGE 8 EAST, MOUNT DIABLO BASE AND MERIDIAN.

CORNER TYPE



Government Corner ☐ Control ☐
Meander ☐ Property ☐
Rancho ☐ Other ☒

Date of Survey OCT. 29, 2007

COORDINATES (Optional)

N _____
E _____
Zone _____ NAD27 ☐ NAD83 ☐
NAD83 Epoch _____
Elevation _____
Vert. Datum: NVGD29 ☐ NVGD88 ☐
Meas Units: Metric ☐ Imperial ☐

Corner— Left as found ☐ Found and tagged ☐ Established ☐ Reestablished ☒ Rebuilt ☐

Identification and type of corner found: Evidence used to identify or procedure used to establish or reestablish the corner.
3/4" IRON PIPE, IN MONUMENT WELL DESTROYED DURING CONSTRUCTION OF JACK TONE ROAD IMPROVEMENTS. FOUND WITNESS CORNERS AS SHOWN ON CORNER RECORD DOCUMENT NUMBER 08-32

A description of the physical condition of the monument as found and as set or reset: SET 3/4" X 30" IRON PIPE WITH PLASTIC PLUG STAMPED L.S. 6406 IN MONUMENT WELL USING TIES SHOWN ON CORNER RECORD DOCUMENT NUMBER 08-32

SURVEYOR'S STATEMENT

This Corner Record was prepared by me or under my direction in conformance with the Land Surveyors' Act on JANUARY 24, 2008.

Signed [Signature] P.L.S. or R.C.E. Number LS 6406



COUNTY SURVEYOR'S STATEMENT

This Corner Record was received JANUARY 25, 2008 and examined and filed FEBRUARY 4, 2008.

Signed [Signature] P.L.S. or R.C.E. Number _____

Title Asst. County Surveyor

County Surveyor's Comment _____

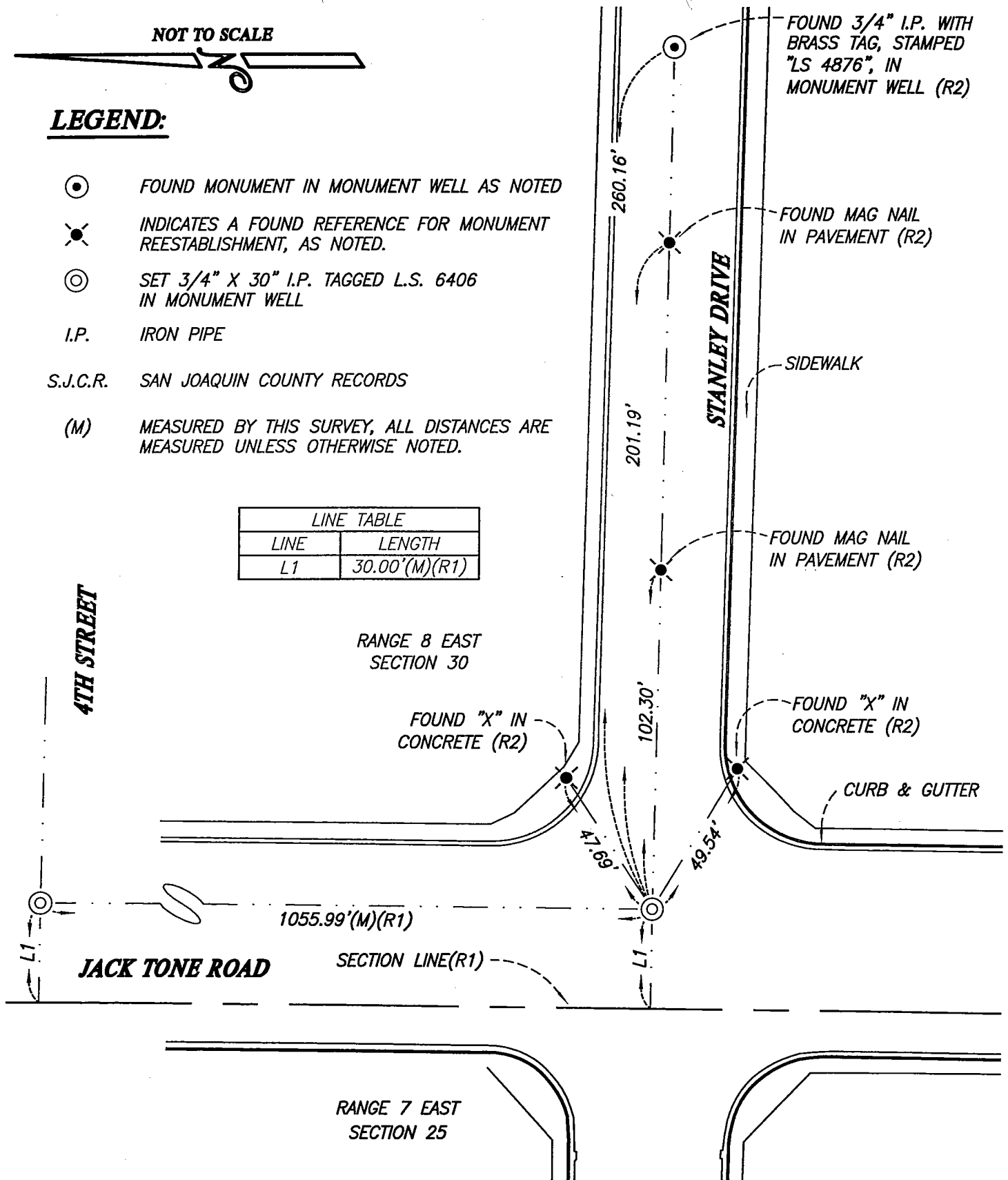


NOT TO SCALE

LEGEND:

- ⊙ FOUND MONUMENT IN MONUMENT WELL AS NOTED
- ✕ INDICATES A FOUND REFERENCE FOR MONUMENT REESTABLISHMENT, AS NOTED.
- ⊙ SET 3/4" X 30" I.P. TAGGED L.S. 6406 IN MONUMENT WELL
- I.P. IRON PIPE
- S.J.C.R. SAN JOAQUIN COUNTY RECORDS
- (M) MEASURED BY THIS SURVEY, ALL DISTANCES ARE MEASURED UNLESS OTHERWISE NOTED.

LINE TABLE	
LINE	LENGTH
L1	30.00'(M)(R1)



REFERENCES:

- (R1) RECORD PER BOOK 31 OF MAPS AND PLATS, AT PAGE 69, S.J.C.R.
- (R2) RECORD PER CORNER RECORD DOCUMENT NUMBER 08-32