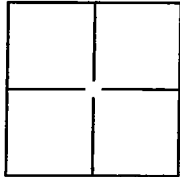


CORNER RECORD

Document Number 02-08-54
County of SAN JOAQUIN, California

City of RIPON

Brief Legal Description SITUATE IN THE WEST HALF OF SECTION 30, TOWNSHIP 2 SOUTH,
RANGE 8 EAST, MOUNT DIABLO BASE AND MERIDIAN.



CORNER TYPE

Government Corner ☐ Control ☐
Meander ☐ Property ☐
Rancho ☐ Other ☒

Date of Survey OCT. 29, 2007

COORDINATES (Optional)

N _____
E _____
Zone _____ NAD27 ☐ NAD83 ☐
NAD83 Epoch _____
Elevation _____
Vert. Datum: NVGD29 ☐ NVGD88 ☐
Meas Units: Metric ☐ Imperial ☐

Corner— Left as found ☐ Found and tagged ☐ Established ☐ Reestablished ☒ Rebuilt ☐

Identification and type of corner found: Evidence used to identify or procedure used to establish or reestablish the corner.
3/4" IRON PIPE WITH BRASS TAG STAMPED "L.S. 4876", IN MONUMENT WELL DESTROYED
DURING CONSTRUCTION OF JACK TONE ROAD IMPROVEMENTS. FOUND WITNESS CORNERS
AS SHOWN ON CORNER RECORD DOCUMENT NUMBER 08-30

A description of the physical condition of the monument as found and as set or reset: SET 3/4" X 30"
IRON PIPE WITH PLASTIC PLUG STAMPED L.S. 6406 IN MONUMENT WELL USING TIES SHOWN
ON CORNER RECORD DOCUMENT NUMBER 08-30

SURVEYOR'S STATEMENT

This Corner Record was prepared by me or under my direction in conformance with
the Land Surveyors' Act on JANUARY 24, 2008.

Signed [Signature] P.L.S. or R.C.E. Number LS 6406



COUNTY SURVEYOR'S STATEMENT

This Corner Record was received JANUARY 25, 2008 and examined
and filed FEBRUARY 4, 2008.

Signed [Signature] P.L.S. or R.C.E. Number 4440

Title Asst. County Surveyor

County Surveyor's Comment _____



NOT TO SCALE

LEGEND:

✕ INDICATES A FOUND REFERENCE FOR MONUMENT REESTABLISHMENT, AS NOTED.

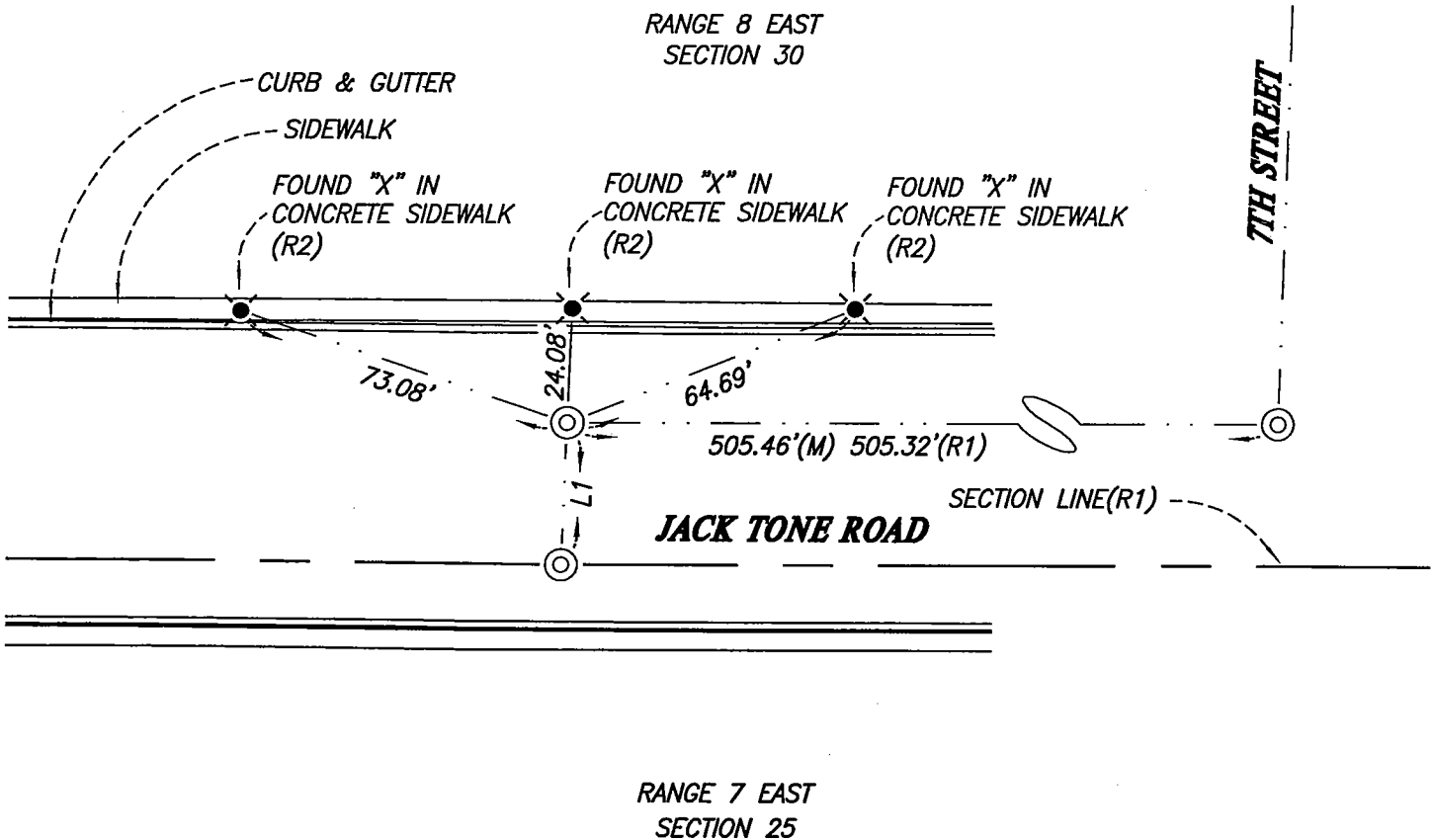
⊙ SET 3/4" X 30" I.P. TAGGED L.S. 6406 IN MONUMENT WELL

I.P. IRON PIPE

S.J.C.R. SAN JOAQUIN COUNTY RECORDS

(M) MEASURED BY THIS SURVEY, ALL DISTANCES ARE MEASURED UNLESS OTHERWISE NOTED.

LINE TABLE	
LINE	LENGTH
L1	30.01'(M)(R1)



REFERENCES:

(R1) RECORD PER BOOK 26 OF MAPS AND PLATS, AT PAGE 144, S.J.C.R.

(R2) RECORD PER CORNER RECORD DOCUMENT NUMBER 08-30