

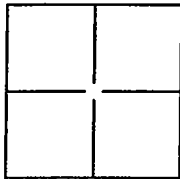
# CORNER RECORD

Document Number CR-08-52

City of RIPON

County of SAN JOAQUIN, California

Brief Legal Description SITUATE IN THE SOUTHWEST QUARTER OF SECTION 30, TOWNSHIP 2 SOUTH, RANGE 8 EAST, MOUNT DIABLO BASE AND MERIDIAN.



## CORNER TYPE

Government Corner ☐ Control ☐  
Meander ☐ Property ☐  
Rancho ☐ Other ☒

Date of Survey OCT. 29, 2007

## COORDINATES (Optional)

N \_\_\_\_\_  
E \_\_\_\_\_  
Zone \_\_\_\_\_ NAD27 ☐ NAD83 ☐  
NAD83 Epoch \_\_\_\_\_  
Elevation \_\_\_\_\_  
Vert. Datum: NVGD29 ☐ NVGD88 ☐  
Meas Units: Metric ☐ Imperial ☐

Corner-- Left as found ☐ Found and tagged ☐ Established ☐ Reestablished ☒ Rebuilt ☐

Identification and type of corner found: Evidence used to identify or procedure used to establish or reestablish the corner.  
TWO 3/4" IRON PIPES WITH PLASTIC CAPS STAMPED "R.C.E. 22918" IN MONUMENT WELLS DESTROYED DURING CONSTRUCTION OF JACK TONE ROAD IMPROVEMENTS. FOUND WITNESS CORNERS AS SHOWN ON CORNER RECORD DOCUMENT NUMBER 08-28

A description of the physical condition of the monument as found and as set or reset: SET 3/4" X 30" IRON PIPE WITH PLASTIC PLUG STAMPED L.S. 6406 IN MONUMENT WELL USING TIES SHOWN ON CORNER RECORD DOCUMENT NUMBER 08-28

## SURVEYOR'S STATEMENT

This Corner Record was prepared by me or under my direction in conformance with the Land Surveyors' Act on JANUARY 24, 2008.

Signed [Signature] P.L.S. or R.C.E. Number LS 6406



## COUNTY SURVEYOR'S STATEMENT

This Corner Record was received JANUARY 25, 2008 and examined and filed FEBRUARY 4 2008.

Signed [Signature] P.L.S. or R.C.E. Number 4440

Title Asst. County Surveyor

County Surveyor's Comment \_\_\_\_\_



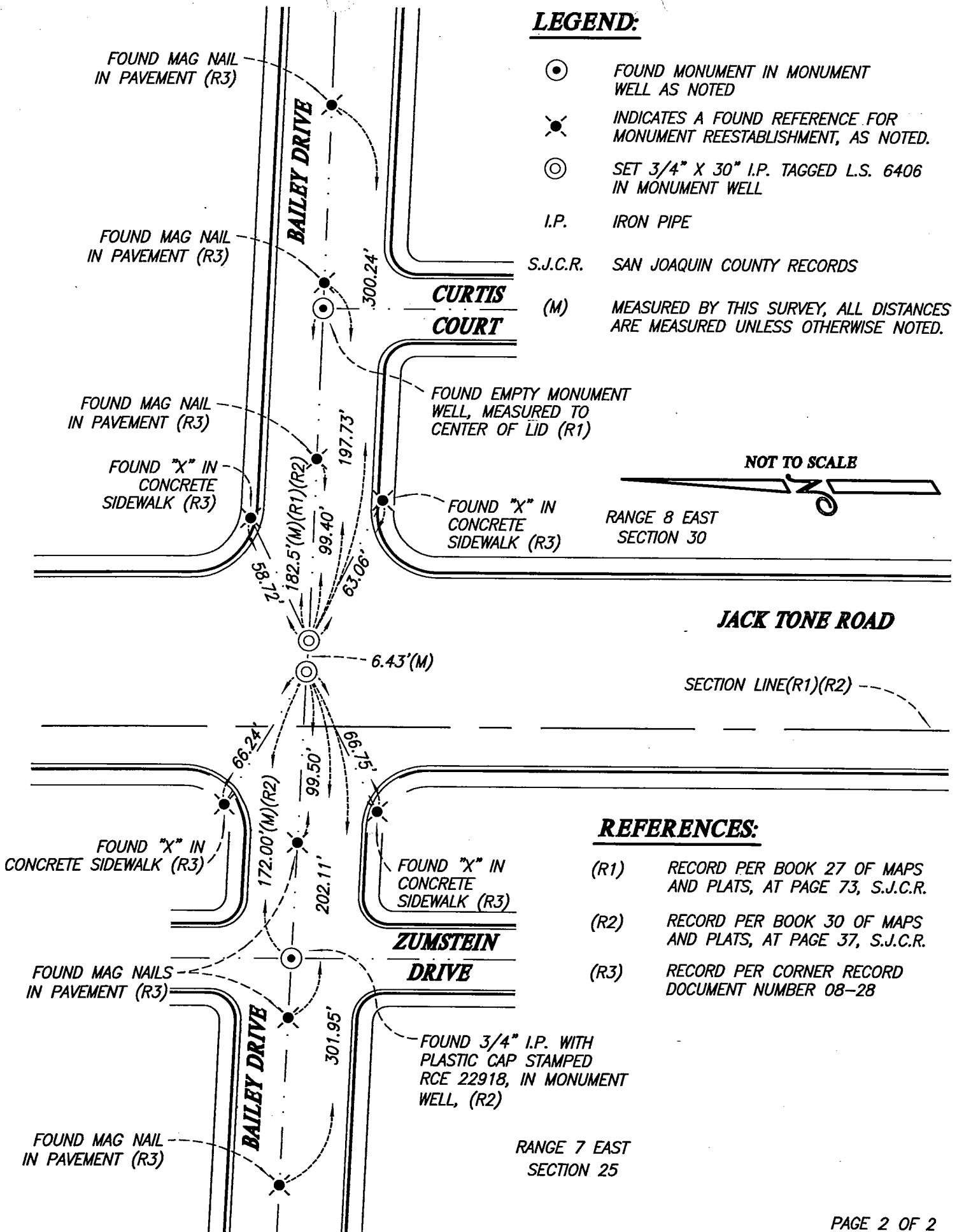
## LEGEND:

- ⊙ FOUND MONUMENT IN MONUMENT WELL AS NOTED
- ✕ INDICATES A FOUND REFERENCE FOR MONUMENT REESTABLISHMENT, AS NOTED.
- ⊙ SET 3/4" X 30" I.P. TAGGED L.S. 6406 IN MONUMENT WELL

I.P. IRON PIPE

S.J.C.R. SAN JOAQUIN COUNTY RECORDS

(M) MEASURED BY THIS SURVEY, ALL DISTANCES ARE MEASURED UNLESS OTHERWISE NOTED.



## REFERENCES:

- (R1) RECORD PER BOOK 27 OF MAPS AND PLATS, AT PAGE 73, S.J.C.R.
- (R2) RECORD PER BOOK 30 OF MAPS AND PLATS, AT PAGE 37, S.J.C.R.
- (R3) RECORD PER CORNER RECORD DOCUMENT NUMBER 08-28