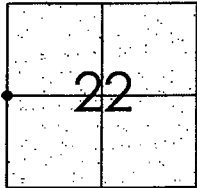


CORNER RECORD

City of _____

Document Number CR-08-42
County of San Joaquin, California

Brief Legal Description CAMPBELL ROAD WEST 1/4 CORNER SECTION 22



T1S R9E

CORNER TYPE

Government Corner ☒ Control ☐
Meander ☐ Property ☐
Rancho ☐ Other ☐

Date of Survey January 17, 2008

COORDINATES (Optional)

N. _____
E. _____
Zone _____ NAD27 ☐ NAD83 ☐
NAD83 Epoch _____
Elev. _____
Vert. Datum: NGVD29 ☐ NAVD88 ☐
Meas. Units: Metric ☐ Imperial ☒

Corner - Left as found ☒ Found and tagged ☐ Established ☐ Reestablished ☐ Rebuilt ☐

Identification and type of corner found: Evidence used to identify or procedure used to establish or reestablish the corner:
SEE SKETCH ON BACKSIDE.

A description of the physical condition of the monument as found and as set or reset: _____
SEE SKETCH ON BACKSIDE.

SURVEYOR'S STATEMENT

This Corner Record was prepared by me or under my direction in conformance with the Land Surveyors' Act on Jan 30, 2008.

Signed Manuel Solorio R.C.E. Number C30890



COUNTY SURVEYOR'S STATEMENT

This Corner Record was received JANUARY 31, 2008 and examined and filed FEBRUARY 4, 2008.

Signed Jeff D. Lund P.L.S. No. 4440

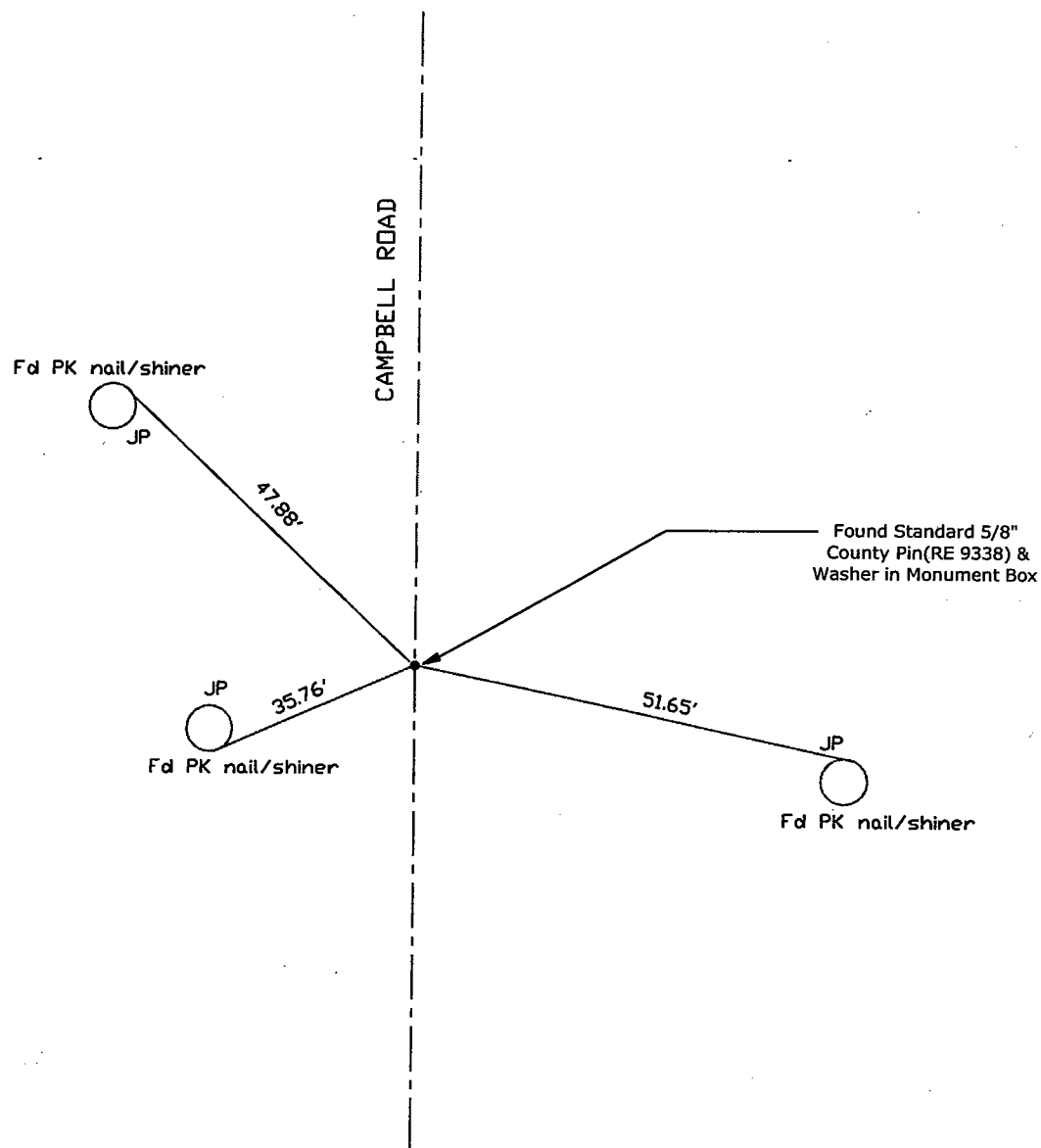
Title Assistant County Surveyor

County Surveyor's Comment _____





N.T.S.



Note: Found Monuments are not tagged
unless otherwise noted.

"No Attempt Was Made to Verify the Monument(s)"

FP=Fence Post
GP=Guy Post
JP=Joint Pole
PP=Power Pole
SP=Service Pole
TP=Telephone Pole
S.F.N=Searched Found Nothing
N.T.S.=Not To Scale
Set=Conc. Nail with Brass Washer Stamped
"S.J. Co.", unless otherwise noted

Note: Set Ties are Brass Washers
Stamped "S.J.Co. PUBLIC WORKS"