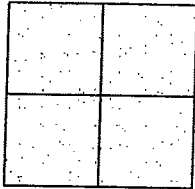


CORNER RECORD

City of

Document Number CR-08-40
County of San Joaquin, California

Brief Legal Description VICTOR ROAD 2085' EAST OF JACK TONE ROAD.



CORNER TYPE

Government Corner ☐ Control ☐
Meander ☐ Property ☐
Rancho ☐ Other ☒

Date of Survey November 16, 2005

COORDINATES (Optional)

N.
E.
Zone NAD27 ☐ NAD83 ☐
NAD83 Epoch
Elev.
Vert. Datum: NGVD29 ☐ NAVD88 ☐
Meas. Units: Metric ☐ Imperial ☒

Corner - Left as found ☒ Found and tagged ☐ Established ☐ Reestablished ☐ Rebuilt ☐

Identification and type of corner found: Evidence used to identify or procedure used to establish or reestablish the corner:
SEE SKETCH ON BACKSIDE.

A description of the physical condition of the monument as found and as set or reset:
SEE SKETCH ON BACKSIDE.

SURVEYOR'S STATEMENT

This Corner Record was prepared by me or under my direction in conformance with the Land Surveyors' Act on Jan 23, 2008.

Signed Manuel Solorio R.C.E. Number C30890

COUNTY SURVEYOR'S STATEMENT

This Corner Record was received JANUARY 25, 2008 and examined and filed JANUARY 28, 2008.

Signed Jeff D. Lund P.L.S. No. 4440

Title Assistant County Surveyor

County Surveyor's Comment

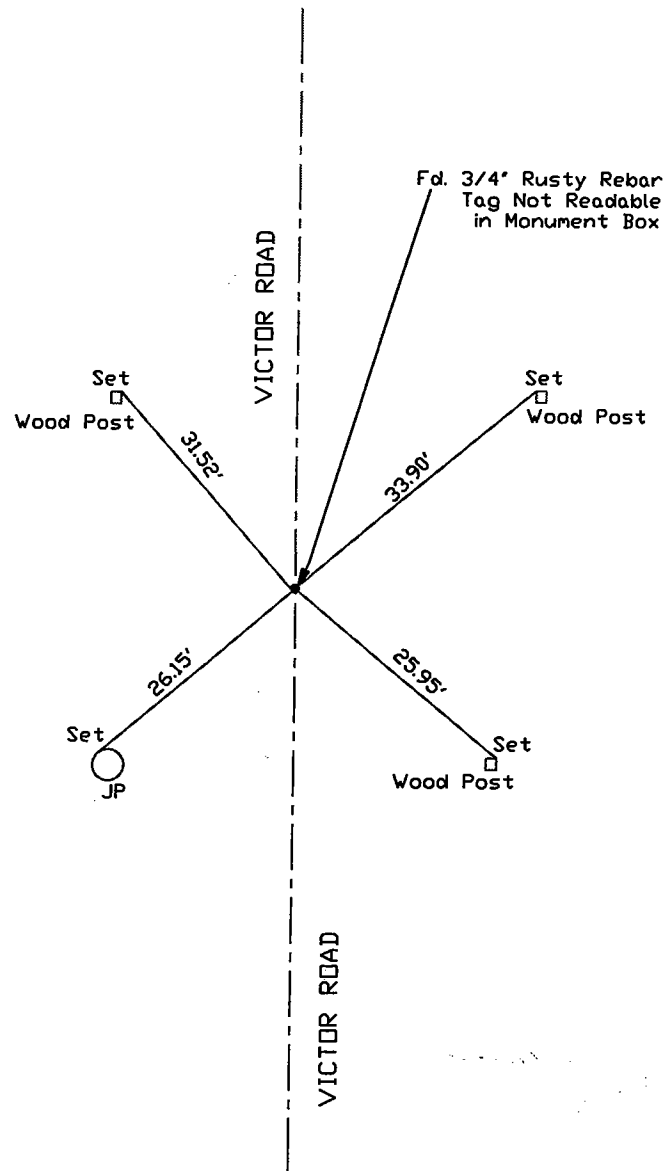
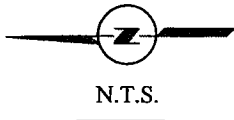
THIS CORNER RECORD IS NOT IN COMPLIANCE WITH BOARD RULE 464(c)

REGARDING SUBMITTAL WITHIN 90 DAYS FROM THE DATE OF SURVEY.



Manuel Solorio





Note: Found Monuments are not tagged
unless otherwise noted.

"No Attempt Was Made to Verify the Monument(s)"

FP=Fence Post
GP=Guy Post
JP=Joint Pole
PP=Power Pole
SP=Service Pole
TP=Telephone Pole
S.F.N=Searched Found Nothing
N.T.S.=Not To Scale
Set=Conc. Nail with Brass Washer Stamped
"S.J. Co.", unless otherwise noted

Note: Set Ties are Brass Washers
Stamped "S.J.Co. PUBLIC WORKS"