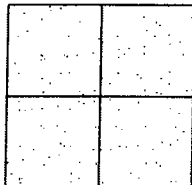


CORNER RECORD

City of _____

Document Number CP-08-38
County of San Joaquin, California

Brief Legal Description PONY LANE FROM VICTOR ROAD TO PINTO LANE



CORNER TYPE

Government Corner ☐ Control ☐
Meander ☐ Property ☐
Rancho ☐ Other ☒

Date of Survey November 15, 2005

COORDINATES (Optional)

N. _____
E. _____
Zone _____ NAD27 ☐ NAD83 ☐
NAD83 Epoch _____
Elev. _____
Vert. Datum: NGVD29 ☐ NAVD88 ☐
Meas. Units: Metric ☐ Imperial ☒

Corner - Left as found ☒ Found and tagged ☐ Established ☐ Reestablished ☐ Rebuilt ☐

Identification and type of corner found: Evidence used to identify or procedure used to establish or reestablish the corner:
SEE SKETCH ON BACKSIDE.

A description of the physical condition of the monument as found and as set or reset:

FOUND IRON PINS ON AC SURFACE 29', 88' AND 206' NORTH OF VICTOR ROAD INTERSECTION.

SEE SKETCH ON BACKSIDE.

SURVEYOR'S STATEMENT

This Corner Record was prepared by me or under my direction in conformance with the Land Surveyors' Act on Jan. 23, 2008.

Signed Manuel Solorio R.C.E. Number C30890



Manuel Solorio

COUNTY SURVEYOR'S STATEMENT

This Corner Record was received JANUARY 25, 2008 and examined and filed JANUARY 28, 2008.

Signed Jeff D. Lund P.L.S. No. 4440

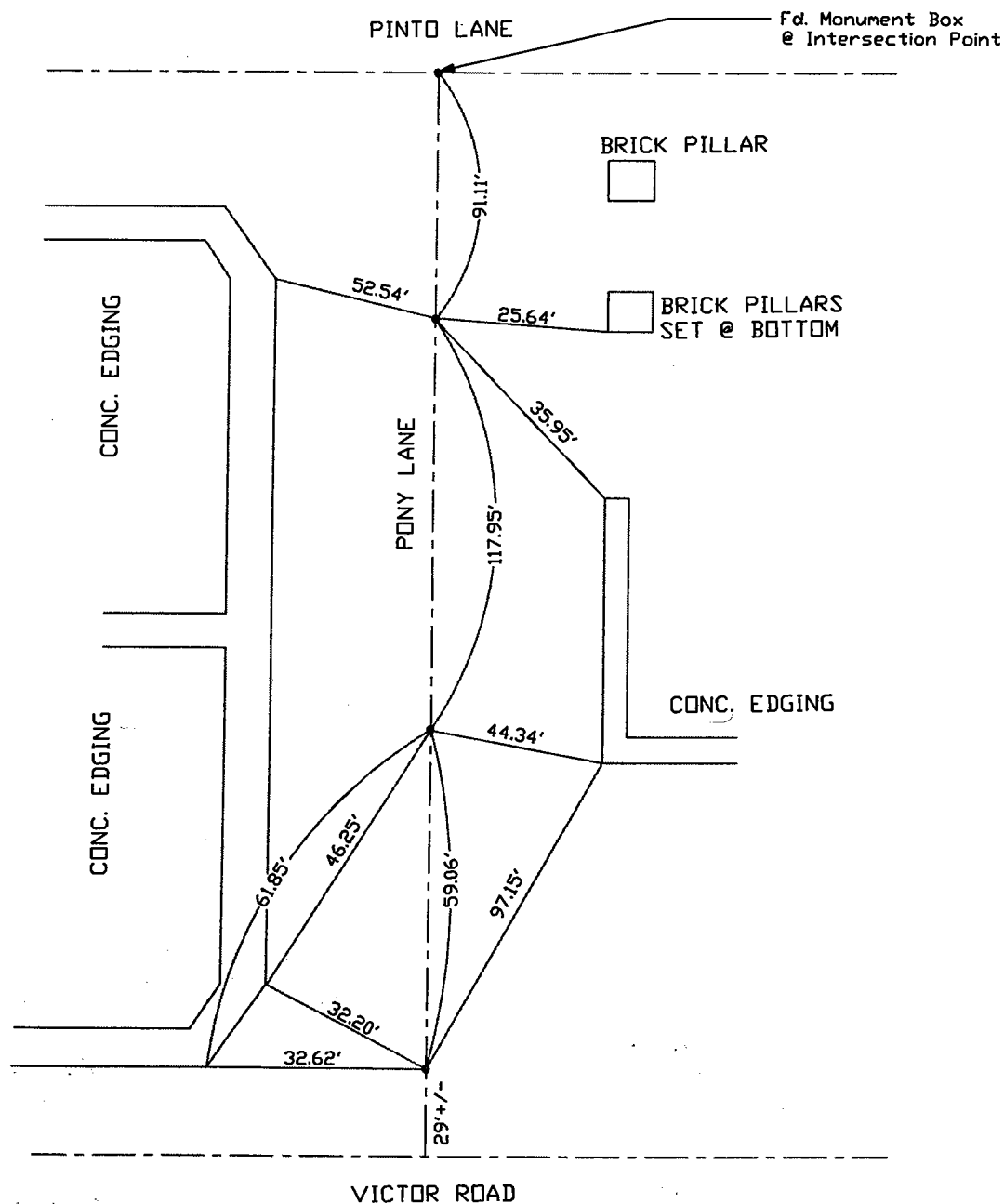
Title Assistant County Surveyor



County Surveyor's Comment

THIS CORNER RECORD IS NOT IN COMPLIANCE WITH BOARD RULE 464(c)

REGARDING SUBMITTAL WITHIN 90 DAYS FROM THE DATE OF SURVEY.



Note: Found Monuments are not tagged unless otherwise noted. Ties are to found corners of concrete mow strips unless noted otherwise.

"No Attempt Was Made to Verify the Monument(s)"

Note: Set Ties are Brass Washers Stamped "S.J.Co. PUBLIC WORKS"

FP=Fence Post
 GP=Guy Post
 JP=Joint Pole
 PP=Power Pole
 SP=Service Pole
 TP=Telephone Pole
 S.F.N=Searched Found Nothing
 N.T.S.=Not To Scale
 Set=Conc. Nail with Brass Washer Stamped
 "S.J. Co.", unless otherwise noted