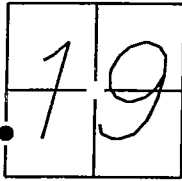


CORNER RECORD

Document Number 08-35
County of SAN JOAQUIN, California

City of RIPON

Brief Legal Description SITUATE IN THE SOUTHWEST QUARTER OF SECTION 19, TOWNSHIP 2 SOUTH, RANGE 8 EAST, MOUNT DIABLO BASE AND MERIDIAN.



CORNER TYPE

Government Corner ☐ Control ☐
Meander ☐ Property ☐
Rancho ☐ Other ☒

Date of Survey JUNE 28, 2007

COORDINATES (Optional)

N _____
E _____
Zone _____ NAD27 ☐ NAD83 ☐
NAD83 Epoch _____
Elevation _____
Vert. Datum: NVGD29 ☐ NVGD88 ☐
Meas Units: Metric ☐ Imperial ☐

Corner- Left as found ☒ Found and tagged ☐ Established ☐ Reestablished ☐ Rebuilt ☐

Identification and type of corner found: Evidence used to identify or procedure used to establish or reestablish the corner.
FOUND 3/4" IRON PIPE TAGGED "L.S. 3383", IN CONCRETE, AT THE INTERSECTION OF JACK TONE ROAD AND HARVEST DRIVE, PER MAPS & PLATS, VOLUME 31, PAGE 20, S.J.C.R.

A description of the physical condition of the monument as found and as set or reset:
FOUND 3/4" IRON PIPE TAGGED "L.S. 3383", IN CONCRETE, PER MAPS & PLATS, VOLUME 31, PAGE 20, S.J.C.R. SET WITNESS TIES AS SHOWN ON DIAGRAM ON PAGE 2 OF 2 HERON.

SURVEYOR'S STATEMENT

This Corner Record was prepared by me or under my direction in conformance with the Land Surveyors' Act on DECEMBER 5, 2007.

Signed [Signature] P.L.S. or R.C.E. Number LS 6406



COUNTY SURVEYOR'S STATEMENT

This Corner Record was received _____ and examined
and filed _____

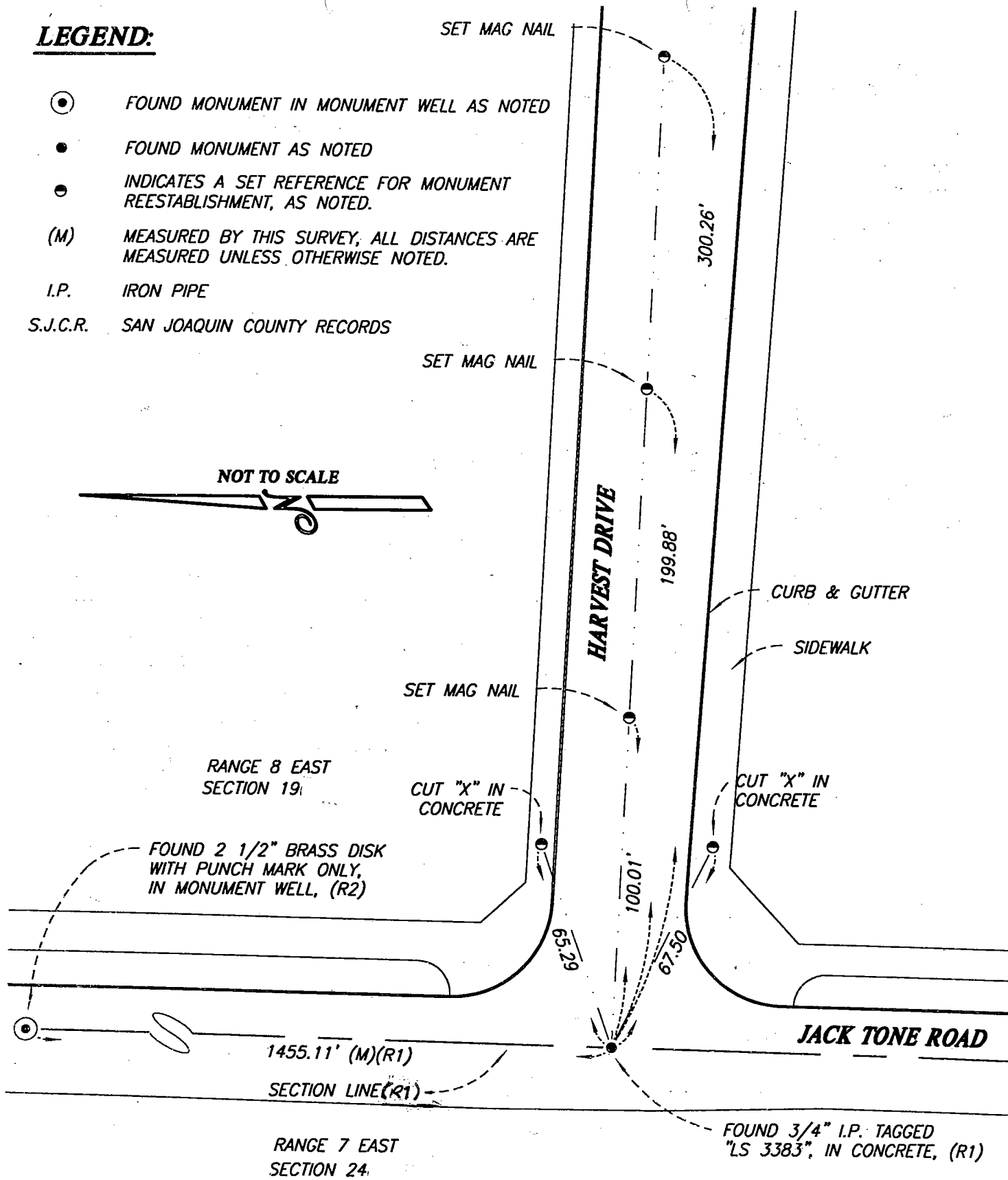
Signed _____ P.L.S. or R.C.E. Number _____

Title _____

County Surveyor's Comment _____

LEGEND:

- FOUND MONUMENT IN MONUMENT WELL AS NOTED
 - FOUND MONUMENT AS NOTED
 - ◐ INDICATES A SET REFERENCE FOR MONUMENT REESTABLISHMENT, AS NOTED.
 - (M) MEASURED BY THIS SURVEY, ALL DISTANCES ARE MEASURED UNLESS OTHERWISE NOTED.
- I.P. IRON PIPE
- S.J.C.R. SAN JOAQUIN COUNTY RECORDS



REFERENCES:

- (R1) RECORD PER BOOK 31 OF MAPS AND PLATS, AT PAGE 20, S.J.C.R.
(R2) RECORD PER BOOK 35 OF SURVEYS, AT PAGE 196, S.J.C.R.