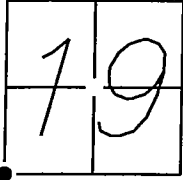


CORNER RECORD

Document Number 08-34
County of SAN JOAQUIN, California

City of RIPON

Brief Legal Description SITUATE AT THE SOUTHWEST CORNER OF SECTION 19, TOWNSHIP 2
SOUTH, RANGE 8 EAST, MOUNT DIABLO BASE AND MERIDIAN.



CORNER TYPE

Government Corner ☒ Control ☐
Meander ☐ Property ☐
Rancho ☐ Other ☐

Date of Survey JUNE 28, 2007

COORDINATES (Optional)

N _____
E _____
Zone _____ NAD27 ☐ NAD83 ☐
NAD83 Epoch _____
Elevation _____
Vert. Datum: NVGD29 ☐ NVGD88 ☐
Meas Units: Metric ☐ Imperial ☐

Corner— Left as found ☒ Found and tagged ☐ Established ☐ Reestablished ☐ Rebuilt ☐

Identification and type of corner found: Evidence used to identify or procedure used to establish or reestablish the corner.
FOUND 2 1/2" BRASS DISK STAMPED "CITY OF RIPON RCE 9338", IN MONUMENT WELL, AT
THE CENTERLINE OF JACK TONE ROAD AND MAIN STREET, PER RECORD OF SURVEY, BOOK 35,
PAGE 196, S.J.C.R.

A description of the physical condition of the monument as found and as set or reset: _____
FOUND 2 1/2" BRASS DISK STAMPED "CITY OF RIPON RCE 9338", IN MONUMENT WELL, PER
RECORD OF SURVEY, BOOK 35, PAGE 196, S.J.C.R. SET WITNESS TIES AS SHOWN ON
DIAGRAM ON PAGE 2 OF 2 HEREON.

SURVEYOR'S STATEMENT

This Corner Record was prepared by me or under my direction in conformance with
the Land Surveyors' Act on DECEMBER 5, 2007.

Signed [Signature] P.L.S. or R.C.E. Number LS 6406



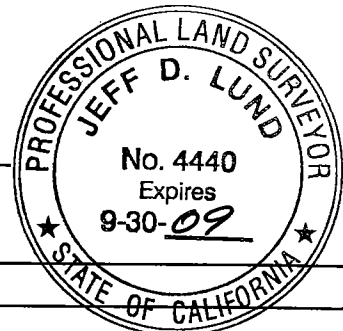
COUNTY SURVEYOR'S STATEMENT

This Corner Record was received JANUARY 11, 2008, and examined
and filed JANUARY 18, 2008.

Signed [Signature] P.L.S. or R.C.E. Number 4440

Title Asst. County Surveyor

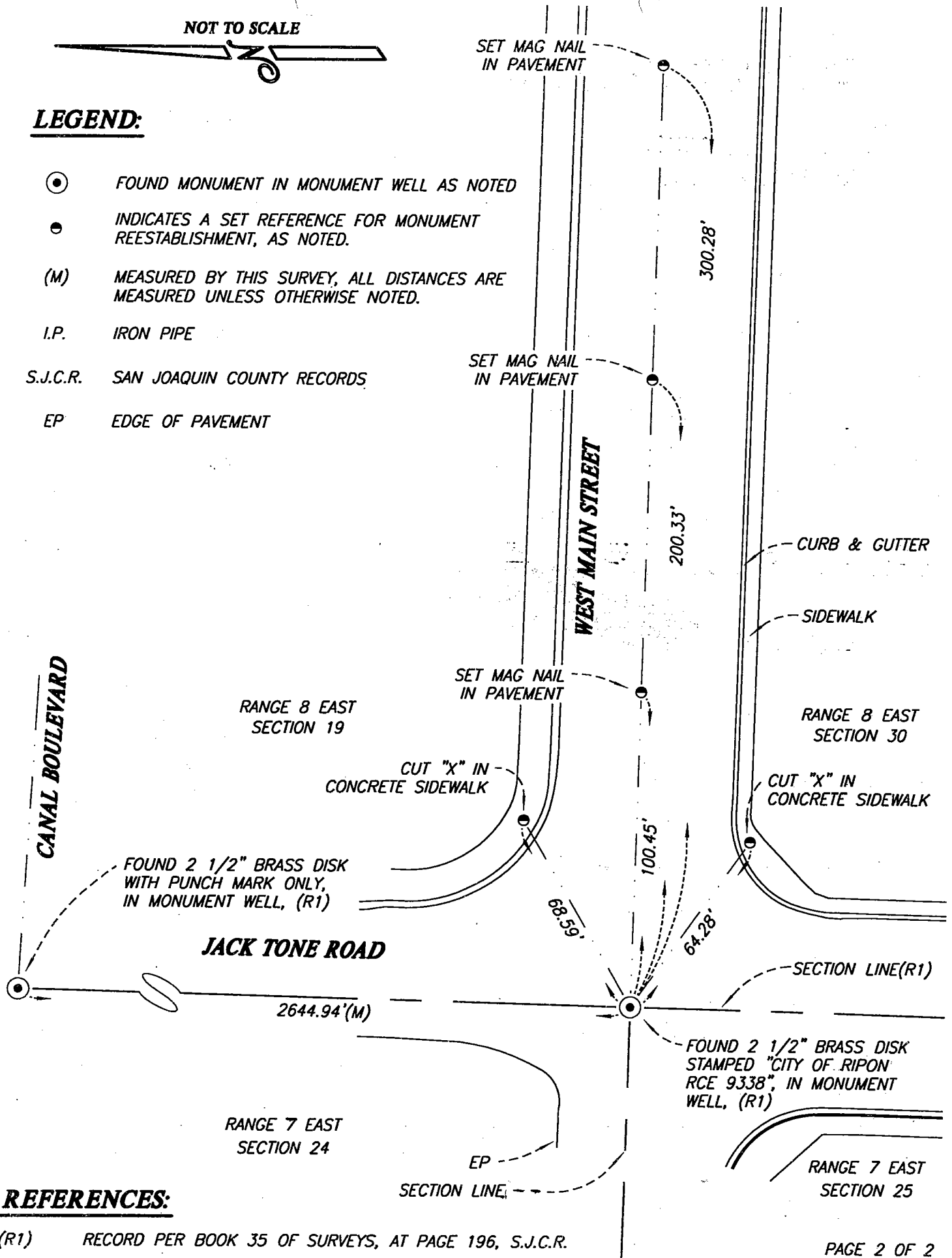
County Surveyor's Comment _____



NOT TO SCALE

LEGEND:

- ⊙ FOUND MONUMENT IN MONUMENT WELL AS NOTED
- INDICATES A SET REFERENCE FOR MONUMENT REESTABLISHMENT, AS NOTED.
- (M) MEASURED BY THIS SURVEY, ALL DISTANCES ARE MEASURED UNLESS OTHERWISE NOTED.
- I.P. IRON PIPE
- S.J.C.R. SAN JOAQUIN COUNTY RECORDS
- EP EDGE OF PAVEMENT



REFERENCES:

(R1) RECORD PER BOOK 35 OF SURVEYS, AT PAGE 196, S.J.C.R.