

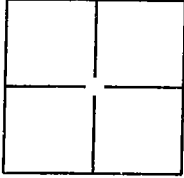
# CORNER RECORD

Document Number 08-32  
County of SAN JOAQUIN, California

City of RIPON

Brief Legal Description SITUATE IN THE NORTHWEST QUARTER OF SECTION 30, TOWNSHIP 2 SOUTH, RANGE 8 EAST, MOUNT DIABLO BASE AND MERIDIAN.

## CORNER TYPE



Government Corner ☐ Control ☐  
Meander ☐ Property ☐  
Rancho ☐ Other ☒

Date of Survey JUNE 28, 2007

## COORDINATES (Optional)

N \_\_\_\_\_  
E \_\_\_\_\_  
Zone \_\_\_\_\_ NAD27 ☐ NAD83 ☐  
NAD83 Epoch \_\_\_\_\_  
Elevation \_\_\_\_\_  
Vert. Datum: NVGD29 ☐ NVGD88 ☐  
Meas Units: Metric ☐ Imperial ☐

Corner- Left as found ☒ Found and tagged ☐ Established ☐ Reestablished ☐ Rebuilt ☐

Identification and type of corner found: Evidence used to identify or procedure used to establish or reestablish the corner.  
FOUND 3/4" IRON PIPE, IN MONUMENT WELL, AT THE INTERSECTION OF JACK TONE ROAD AND CENTERLINE OF STANLEY DRIVE, PER MAPS & PLATS, BOOK 31, PAGE 69, S.J.C.R.

A description of the physical condition of the monument as found and as set or reset:

FOUND 3/4" IRON PIPE, IN MONUMENT WELL, PER MAPS & PLATS, BOOK 31, PAGE 69, S.J.C.R. SET WITNESS TIES AS SHOWN ON DIAGRAM ON PAGE 2 OF 2 HEREON.

## SURVEYOR'S STATEMENT

This Corner Record was prepared by me or under my direction in conformance with the Land Surveyors' Act on DECEMBER 5, 2007,

Signed [Signature] P.L.S. or R.C.E. Number LS 6406



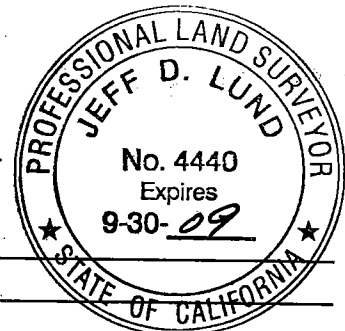
## COUNTY SURVEYOR'S STATEMENT

This Corner Record was received JANUARY 11, 2008, and examined and filed JANUARY 18, 2008.

Signed [Signature] P.L.S. or R.C.E. Number 4440

Title Asst. County Surveyor

County Surveyor's Comment \_\_\_\_\_



NOT TO SCALE

**LEGEND:**

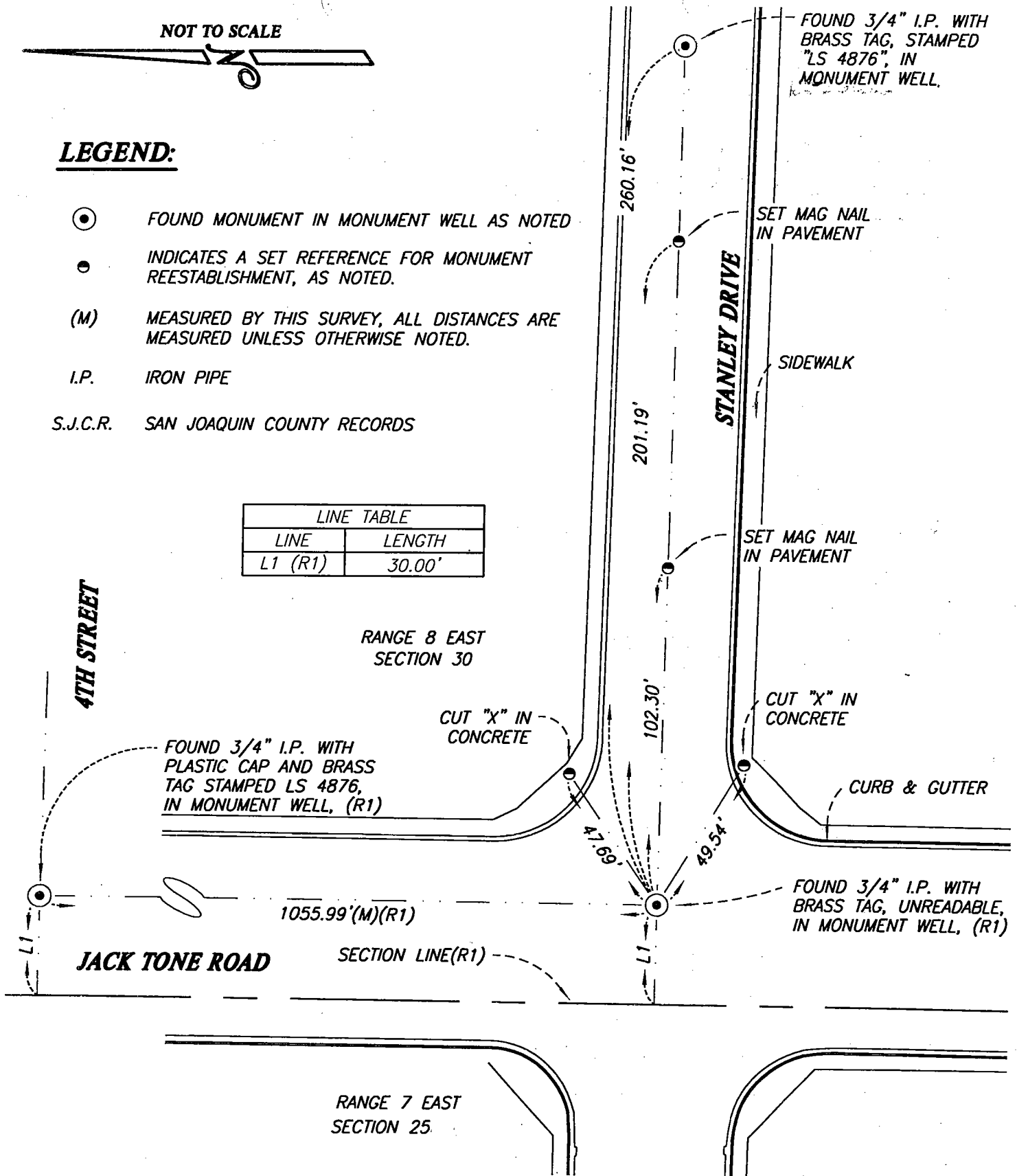
- FOUND MONUMENT IN MONUMENT WELL AS NOTED
- INDICATES A SET REFERENCE FOR MONUMENT REESTABLISHMENT, AS NOTED.

(M) MEASURED BY THIS SURVEY, ALL DISTANCES ARE MEASURED UNLESS OTHERWISE NOTED.

I.P. IRON PIPE

S.J.C.R. SAN JOAQUIN COUNTY RECORDS

LINE TABLE	
LINE	LENGTH
L1 (R1)	30.00'



**REFERENCES:**

(R1) RECORD PER BOOK 31 OF MAPS AND PLATS, AT PAGE 69, S.J.C.R.