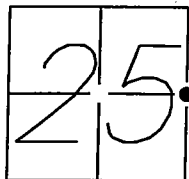


# CORNER RECORD

Document Number 08-31City of RIPONCounty of SAN JOAQUIN, CaliforniaBrief Legal Description SITUATE IN THE EAST HALF OF SECTION 25, TOWNSHIP 2  
SOUTH, RANGE 7 EAST, MOUNT DIABLO BASE AND MERIDIAN.

## CORNER TYPE

Government Corner	<input type="checkbox"/>	Control	<input type="checkbox"/>
Meander	<input type="checkbox"/>	Property	<input type="checkbox"/>
Rancho	<input type="checkbox"/>	Other	<input checked="" type="checkbox"/>

Date of Survey JUNE 28, 2007

## COORDINATES (Optional)

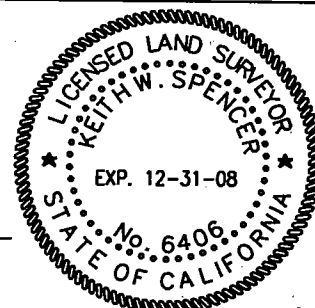
N \_\_\_\_\_  
E \_\_\_\_\_  
Zone \_\_\_\_\_ NAD27 ☐ NAD83 ☐  
NAD83 Epoch \_\_\_\_\_  
Elevation \_\_\_\_\_  
Vert. Datum: NVGD29 ☐ NVGD88 ☐  
Meas Units: Metric ☐ Imperial ☐

Corner— Left as found ☒ Found and tagged ☐ Established ☐ Reestablished ☐ Rebuilt ☐Identification and type of corner found: Evidence used to identify or procedure used to establish or reestablish the corner.  
FOUND 2 1/2" BRASS DISK, STAMPED "CITY OF RIPON PLS 5443", IN MONUMENT WELL AT  
THE EAST 1/4 SECTION CORNER OF SECTION 25, PER RECORD OF SURVEY, BOOK 35,  
PAGE 196, S.J.C.R.

A description of the physical condition of the monument as found and as set or reset:

FOUND 2 1/2" BRASS DISK, STAMPED "CITY OF RIPON PLS 5443", IN MONUMENT WELL, PER  
RECORD OF SURVEY, BOOK 35, PAGE 196, S.J.C.R. SET WITNESS TIES AS SHOWN ON  
DIAGRAM ON PAGE 2 OF 2 HEREON.

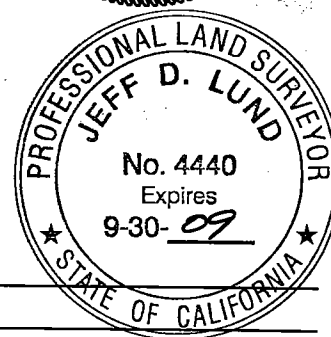
## SURVEYOR'S STATEMENT

This Corner Record was prepared by me or under my direction in conformance with  
the Land Surveyors' Act on DECEMBER 5, 2007.Signed [Signature] P.L.S. or R.C.E. Number LS 6406

## COUNTY SURVEYOR'S STATEMENT

This Corner Record was received JANUARY 11, 2008, and examined  
and filed JANUARY 18, 2008.Signed [Signature] P.L.S. or R.C.E. Number 4440Title Asst. County Surveyor

County Surveyor's Comment \_\_\_\_\_



NOT TO SCALE

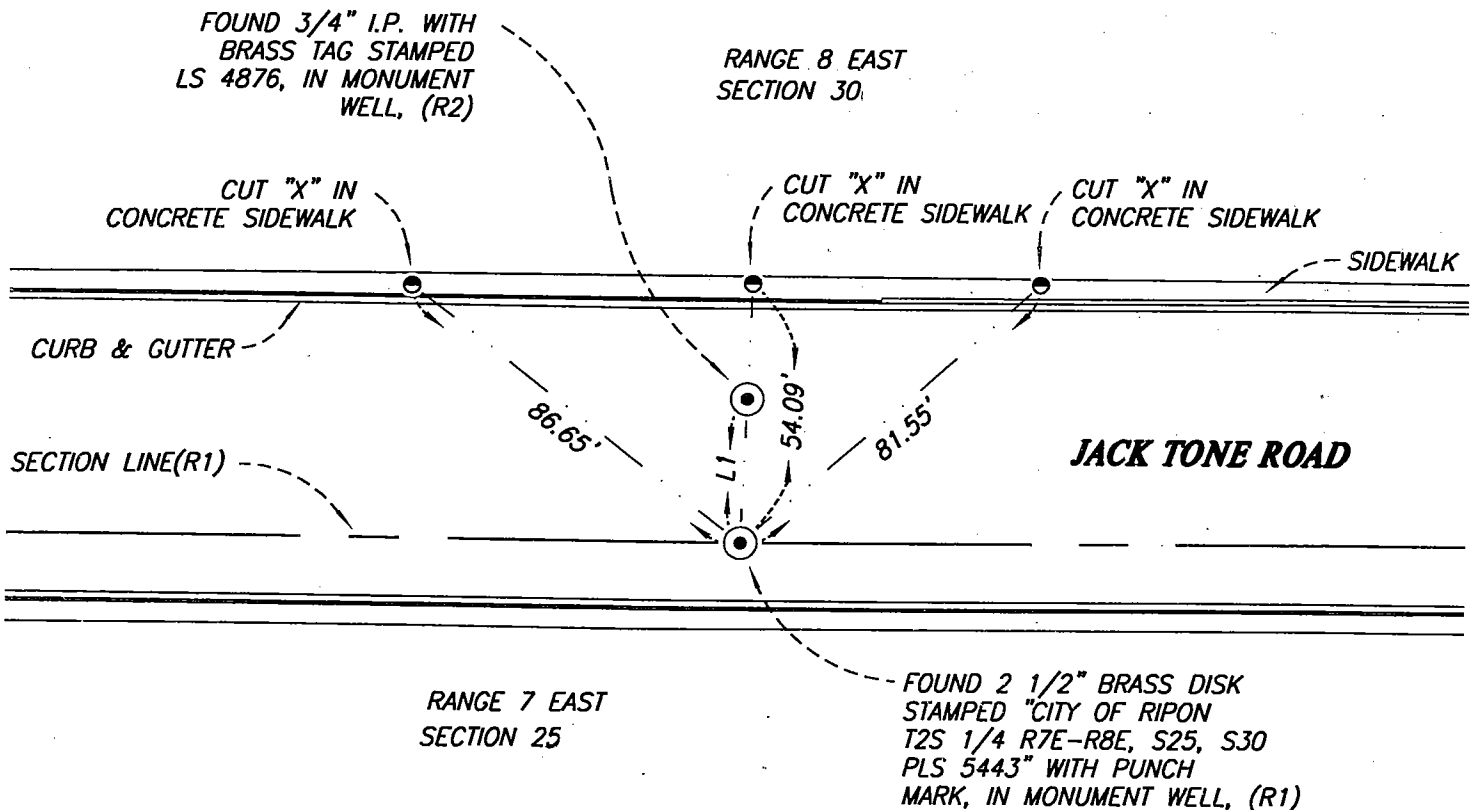
### LEGEND:

- ⊙ FOUND MONUMENT IN MONUMENT WELL AS NOTED
- INDICATES A SET REFERENCE FOR MONUMENT REESTABLISHMENT, AS NOTED.
- (M) MEASURED BY THIS SURVEY, ALL DISTANCES ARE MEASURED UNLESS OTHERWISE NOTED.

I.P. IRON PIPE

S.J.C.R. SAN JOAQUIN COUNTY RECORDS

LINE TABLE	
LINE	LENGTH
L1 (R2)	30.01'



### REFERENCES:

- (R1) RECORD PER BOOK 35 OF SURVEYS, AT PAGE 196, S.J.C.R.
- (R2) RECORD PER BOOK 26 OF MAPS AND PLATS, AT PAGE 144, S.J.C.R.