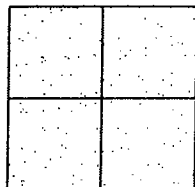


CORNER RECORD

Document Number CR-68-27
 City of _____ County of San Joaquin, California

Brief Legal Description TRETHEWAY ROAD @ LOCKE ROAD



CORNER TYPE

Government Corner ☐ Control ☐
 Meander ☐ Property ☐
 Rancho ☐ Other ☒

Date of Survey June 21, 2005

COORDINATES (Optional)

N. _____
 E. _____
 Zone _____ NAD27 ☐ NAD83 ☐
 NAD83 Epoch _____
 Elev. _____
 Vert. Datum: NGVD29 ☐ NAVD88 ☐
 Meas. Units: Metric ☐ Imperial ☒

Corner - Left as found ☒ Found and tagged ☐ Established ☐ Reestablished ☐ Rebuilt ☐

Identification and type of corner found: Evidence used to identify or procedure used to establish or reestablish the corner:
SEE SKETCH ON BACKSIDE.

A description of the physical condition of the monument as found and as set or reset:
SEE SKETCH ON BACKSIDE.

SURVEYOR'S STATEMENT

This Corner Record was prepared by me or under my direction in conformance with the Land Surveyors' Act on Jan 10, 2008.

Signed Manuel Solorio R.C.E. Number C30890

COUNTY SURVEYOR'S STATEMENT

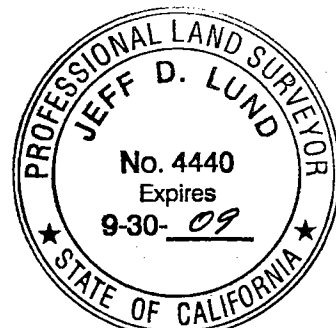
This Corner Record was received JANUARY 17, 2008 and examined and filed JANUARY 18, 2008.

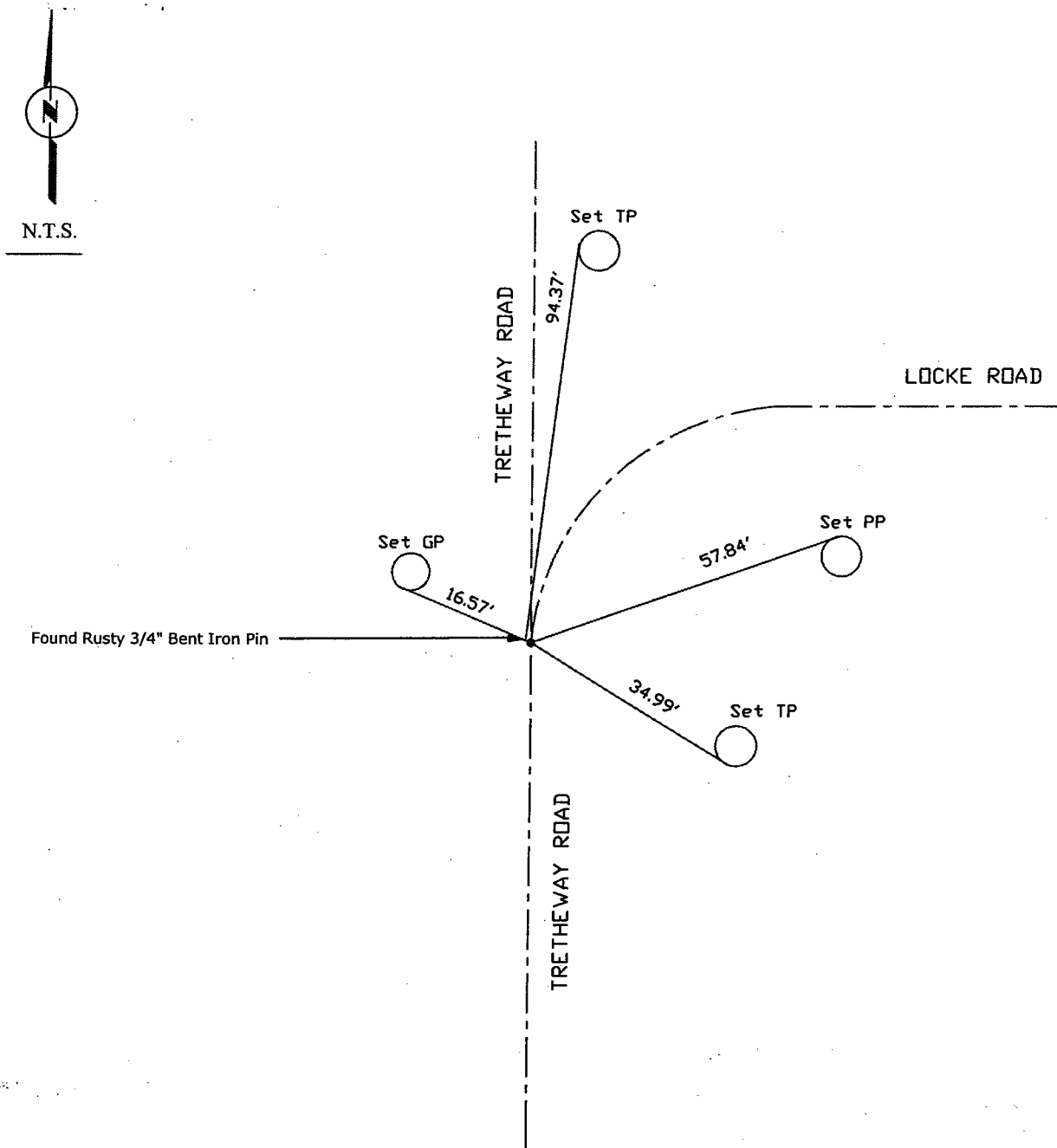
Signed [Signature] P.L.S. No. 4440
 Title Assistant County Surveyor

County Surveyor's Comment _____
THIS CORNER RECORD IS NOT IN COMPLIANCE WITH BOARD RULE 464(c)
REGARDING SUBMITTAL WITHIN 90 DAYS FROM THE DATE OF SURVEY.



Manuel Solorio





Note: Found Monuments are not tagged
unless otherwise noted.

"No Attempt Was Made to Verify the Monument(s)"

FP=Fence Post
GP=Guy Post
JP=Joint Pole
PP=Power Pole
SP=Service Pole
TP=Telephone Pole
S.F.N=Searched Found Nothing
N.T.S.=Not To Scale
Set=Conc. Nail with Brass Washer Stamped
"S.J. Co.", unless otherwise noted

Note: Set Ties are Brass Washers
Stamped "S.J.Co. PUBLIC WORKS"