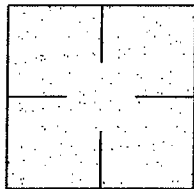


# CORNER RECORD

City of \_\_\_\_\_

Document Number CR-08-24  
County of San Joaquin, California

Brief Legal Description KETTLEMAN LANE 5504± E/O STATE ROUTE 88



## CORNER TYPE

Government Corner ☐ Control ☐  
Meander ☐ Property ☐  
Rancho ☐ Other ☒

Date of Survey May 21, 2004

## COORDINATES (Optional)

N. \_\_\_\_\_  
E. \_\_\_\_\_  
Zone \_\_\_\_\_ NAD27 ☐ NAD83 ☐  
NAD83 Epoch \_\_\_\_\_  
Elev. \_\_\_\_\_  
Vert. Datum: NGVD29 ☐ NAVD88 ☐  
Meas. Units: Metric ☐ Imperial ☒

Corner - Left as found ☒ Found and tagged ☐ Established ☐ Reestablished ☐ Rebuilt ☐

Identification and type of corner found: Evidence used to identify or procedure used to establish or reestablish the corner:  
SEE SKETCH ON BACKSIDE.

A description of the physical condition of the monument as found and as set or reset: \_\_\_\_\_  
FOUND MONUMENT IN GOOD CONDITION. SEE SKETCH ON BACKSIDE.

## SURVEYOR'S STATEMENT

This Corner Record was prepared by me or under my direction in conformance with  
the Land Surveyors' Act on Jan. 10, 2008.

Signed Manuel Solorio R.C.E. Number C30890

## COUNTY SURVEYOR'S STATEMENT

This Corner Record was received JANUARY 17, 2008 and examined  
and filed JANUARY 18, 2008.

Signed Jeff D. Lund P.L.S. No. 4440

Title Assistant County Surveyor

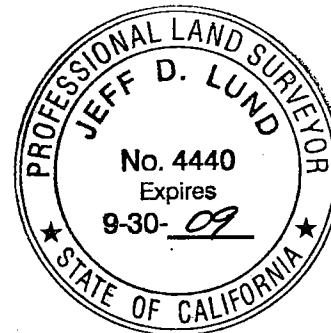
County Surveyor's Comment \_\_\_\_\_

THIS CORNER RECORD IS NOT IN COMPLIANCE WITH BOARD RULE 464(c)

REGARDING SUBMITTAL WITHIN 90 DAYS FROM THE DATE OF SURVEY.

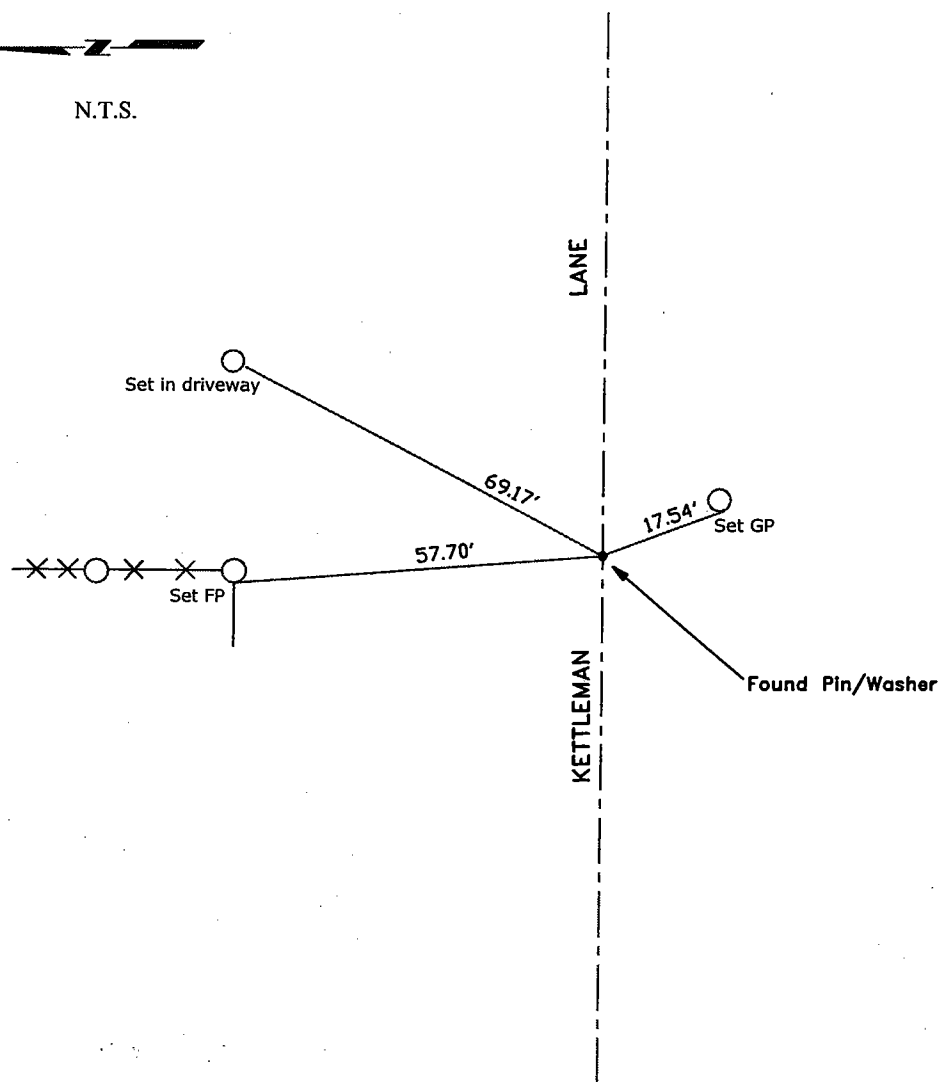


Manuel Solorio





N.T.S.



"No Attempt Was Made to Verify Monument(s)"

FP=Fence Post

GP=Guy Post

JP=Joint Pole

PP=Power Pole

SP=Service Pole

TP=Telephone Pole

N.T.S.=Not to Scale

Set=Conc. Nail with Brass Washer Stamped

"S.J. Co.", unless otherwise noted

Found=Nail with Shiner, unless otherwise noted

Note: Found Monuments are not Tagged nor of  
Record unless otherwise noted.