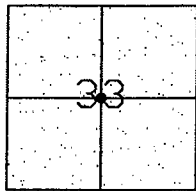


CORNER RECORD

Document Number CR-08-05

City of _____

County of San Joaquin, CaliforniaBrief Legal Description CENTER OF SEC. 33

T1N R8E

CORNER TYPE

Government Corner ☒ Control ☐
Meander ☐ Property ☐
Rancho ☐ Other ☐

Date of Survey May 31, 2007

COORDINATES (Optional)

N. _____
E. _____
Zone _____ NAD27 ☐ NAD83 ☐
NAD83 Epoch _____
Elev. _____
Vert. Datum: NGVD29 ☐ NAVD88 ☐
Meas. Units: Metric ☐ Imperial ☒

Corner - Left as found ☒ Found and tagged ☐ Established ☐ Reestablished ☐ Rebuilt ☐

Identification and type of corner found: Evidence used to identify or procedure used to establish or reestablish the corner:
SEE SKETCH ON BACKSIDE.

A description of the physical condition of the monument as found and as set or reset: _____

FOUND MONUMENT IN GOOD CONDITION. SEE SKETCH ON BACKSIDE.

SURVEYOR'S STATEMENT

This Corner Record was prepared by me or under my direction in conformance with
the Land Surveyors' Act on Jan. 3, 2008

Signed Manuel Solord R.C.E. Number C30890

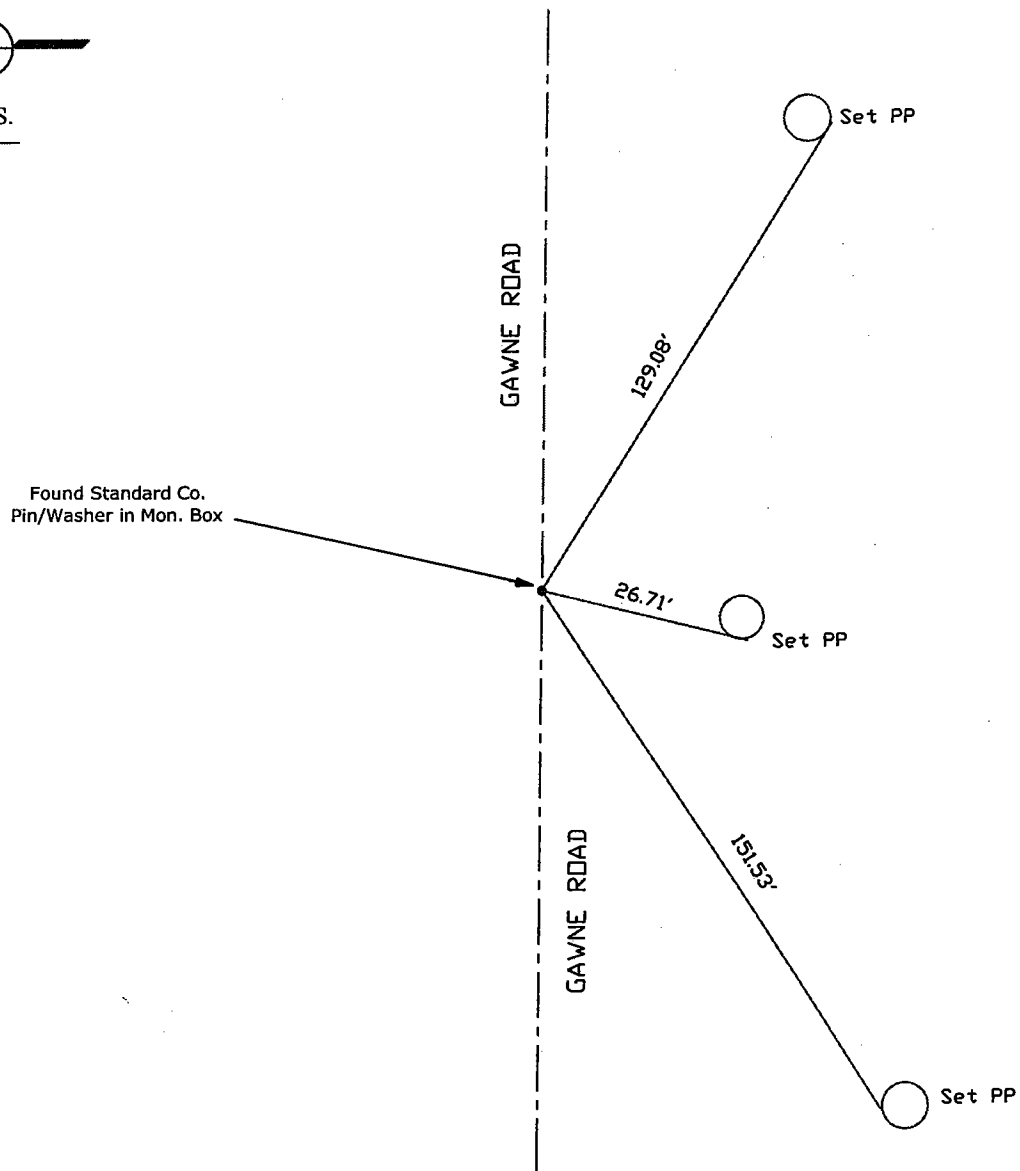
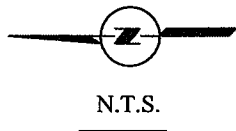
COUNTY SURVEYOR'S STATEMENT

This Corner Record was received JANUARY 7, 2008 and examined
and filed JANUARY 10, 2008

Signed Jeff D. Lund P.L.S. No. 4440Title Assistant County Surveyor

County Surveyor's Comment _____

THIS CORNER RECORD IS NOT IN COMPLIANCE WITH BOARD RULE 464(c)REGARDING SUBMITTAL WITHIN 90 DAYS FROM THE DATE OF SURVEY.Manuel Solord



Note: Found Monuments are not tagged
unless otherwise noted.

"No Attempt Was Made to Verify the Monument(s)"

Note: Set Ties are Brass Washers
Stamped "S.J.Co. PUBLIC WORKS"

FP=Fence Post
GP=Guy Post
JP=Joint Pole
PP=Power Pole
SP=Service Pole
TP=Telephone Pole
S.F.N=Searched Found Nothing
N.T.S.=Not To Scale
Set=Conc. Nail with Brass Washer Stamped
"S.J. Co.", unless otherwise noted