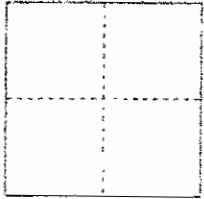


# CORNER RECORD

City of \_\_\_\_\_

Document Number CR-01-62  
County of San Joaquin, California

Brief Legal Description CENTERLINE OF CALLOWAY COURT AS PER  
M & P 26-22 S.J.C.R.



## CORNER TYPE

Government Corner ☐ Control ☒  
Meander ☐ Property ☐  
Rancho ☐ Other ☐

Date of Survey Sept. 17, 2007

## COORDINATES (Optional)

N. \_\_\_\_\_  
E. \_\_\_\_\_  
Zone \_\_\_\_\_ NAD27 ☐ NAD83 ☐  
NAD83 Epoch \_\_\_\_\_  
Elev. \_\_\_\_\_  
Vert. Datum: NGVD29 ☐ NAVD88 ☐  
Meas. Units: Metric ☐ Imperial ☒

Corner - Left as found ☒ Found and tagged ☐ Established ☐ Reestablished ☐ Rebuilt ☐

Identification and type of corner found: Evidence used to identify or procedure used to establish or reestablish the corner:

A description of the physical condition of the monument as found and as set or reset: FO 3/4" REBARS IN  
MONUMENT WELLS WITH NO TAGS. TIED MONUMENTS OUT WITH PLS  
& TAGS STAMPED "LS 8080"

## SURVEYOR'S STATEMENT

This Corner Record was prepared by me or under my direction in conformance with  
the Land Surveyors' Act on DECEMBER 8<sup>th</sup>, 2007.

Signed \_\_\_\_\_ L.S. or R.G.E. Number 8080

## COUNTY SURVEYOR'S STATEMENT

This Corner Record was received December 20, 2007, and examined  
and filed December 21, 2007.

Signed Jeff D. Lund P.L.S. No. 4440

Title Assistant County Surveyor

County Surveyor's Comment \_\_\_\_\_

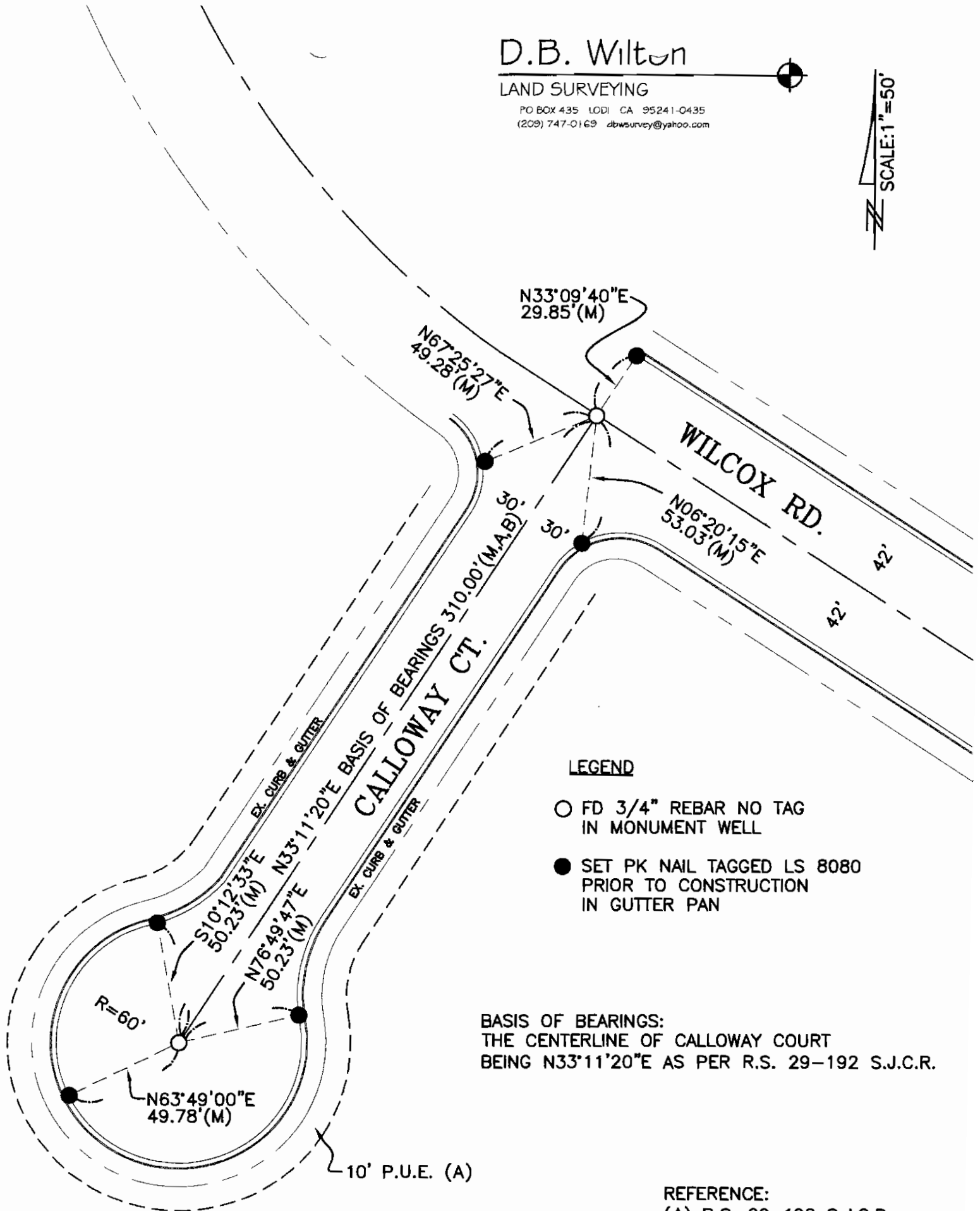


D.B. Wilton

LAND SURVEYING

PO BOX 435 LODI CA 95241-0435  
(209) 747-0169 dbwsurvey@yahoo.com

SCALE: 1"=50'



REFERENCE:

(A) R.S. 29-192 S.J.C.R.

(B) M. & P. 26-22 S.J.C.R.