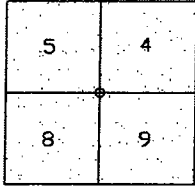


CORNER RECORD

Document Number CR-0757
City of _____ County of San Joaquin, California

Brief Legal Description SEC. COR. ESCALON-BELOTA ROAD.



T1NR9E

CORNER TYPE

Government Corner ☒ Control ☐
Meander ☐ Property ☐
Rancho ☐ Other ☐
Date of Survey August 29, 2007

COORDINATES (Optional)

N. _____
E. _____
Zone _____ NAD27 ☐ NAD83 ☐
NAD83 Epoch _____
Elev. _____
Vert. Datum: NGVD29 ☐ NAVD88 ☐
Meas. Units: Metric ☐ Imperial ☒

Corner - Left as found ☒ Found and tagged ☐ Established ☐ Reestablished ☐ Rebuilt ☐

Identification and type of corner found: Evidence used to identify or procedure used to establish or reestablish the corner:
SEE SKETCH ON BACKSIDE.

A description of the physical condition of the monument as found and as set or reset: _____
FOUND MONUMENT IN GOOD CONDITION. SEE SKETCH ON BACKSIDE.

SURVEYOR'S STATEMENT

This Corner Record was prepared by me or under my direction in conformance with the Land Surveyors' Act on Dec. 10, 2007.

Signed Manuel Solario R.C.E. Number C30890



Manuel Solario

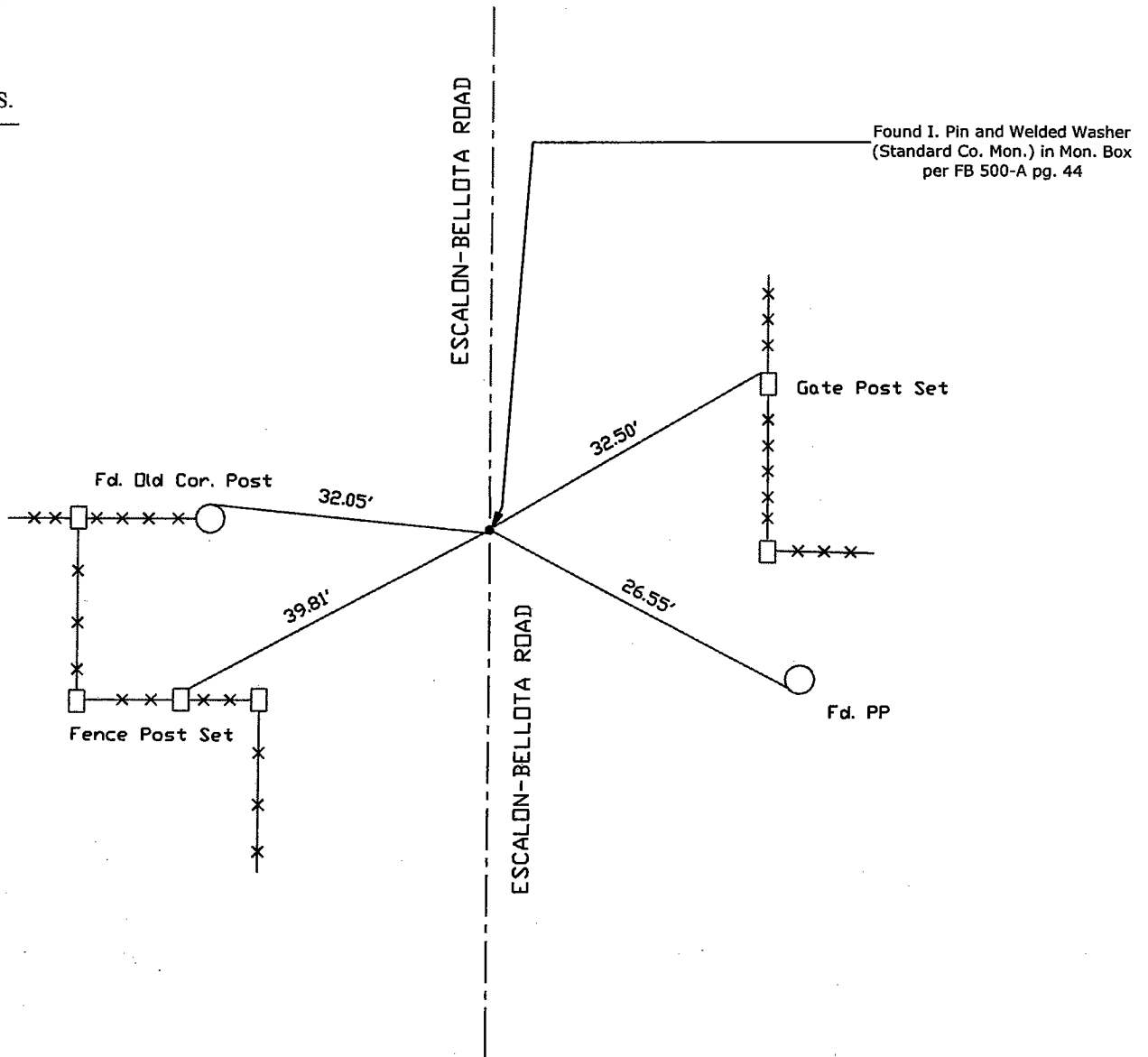
COUNTY SURVEYOR'S STATEMENT

This Corner Record was received December 10, 2007, and examined and filed December 11, 2007.

Signed Jeff D. Lund P.L.S. No. 4440
Title Assistant County Surveyor



County Surveyor's Comment _____



Note: Found Monuments are not tagged
unless otherwise noted.

"No Attempt Was Made to Verify the Monument(s)"

FP=Fence Post
GP=Guy Post
JP=Joint Pole
PP=Power Pole
SP=Service Pole
TP=Telephone Pole
S.F.N=Searched Found Nothing
N.T.S.=Not To Scale
Set=Conc. Nail with Brass Washer Stamped
"S.J. Co.", unless otherwise noted

Note: Set Ties are Brass Washers
Stamped "S.J.Co. PUBLIC WORKS"