

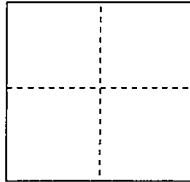
CORNER RECORD

Document Number 07-47

City of Lodi

County of San Joaquin, California

Brief Legal Description Center 1/4 and South 1/4 Section 15 T.3 N. R.6 E. M.D.M.



CORNER TYPE

Government Corner ☒ Control ☐
Meander ☐ Property ☐
Rancho ☐ Other ☐

COORDINATES(Optional)

N. _____
E. _____
Zone _____ NAD27 ☐ NAD83 ☐
NAD83 Epoch _____
Elevation _____
Vert. Datum: NGVD29 ☐ NADV88 ☐
Meas. Units: Metric ☐ Imperial ☒

Date of Survey April 11, 2001

Corner- Left as found ☒ Found and tagged ☐ Established ☐ Reestablished ☐ Rebuilt ☐

Identification and type of corner found: Evidence used to identify or procedure used to establish or reestablish the corner:

Found two corners on 1/4 Section line of Section 15. Tied to North 1/4 of Section and monument from 17 M&P 128.

Monuments to be destroyed during construction of Lower Sacramento Road.

A description of the physical condition of the monument as found and as set or reset:

Found 1/2" pin in monument well and intersection of Lower Sacramento Road and Harney Lane - will not be reset due to traffic lanes.

Found 3/4" bolt in monument well at intersection of Lower Sacramento Road and Century Boulevard - will be reset with well monument

Please see Sketch on Back

SURVEYOR'S STATEMENT

This Corner Record was prepared by me or under my direction in conformance with

the Land Surveyor's Act on 11/26/07

Signed Matthew J. Stringer P.L.S. or R.C.E. No.: 8151



COUNTY SURVEYOR'S STATEMENT

This Corner Record was received NOVEMBER 29, 2007, and examined

and filed DECEMBER 4, 2007

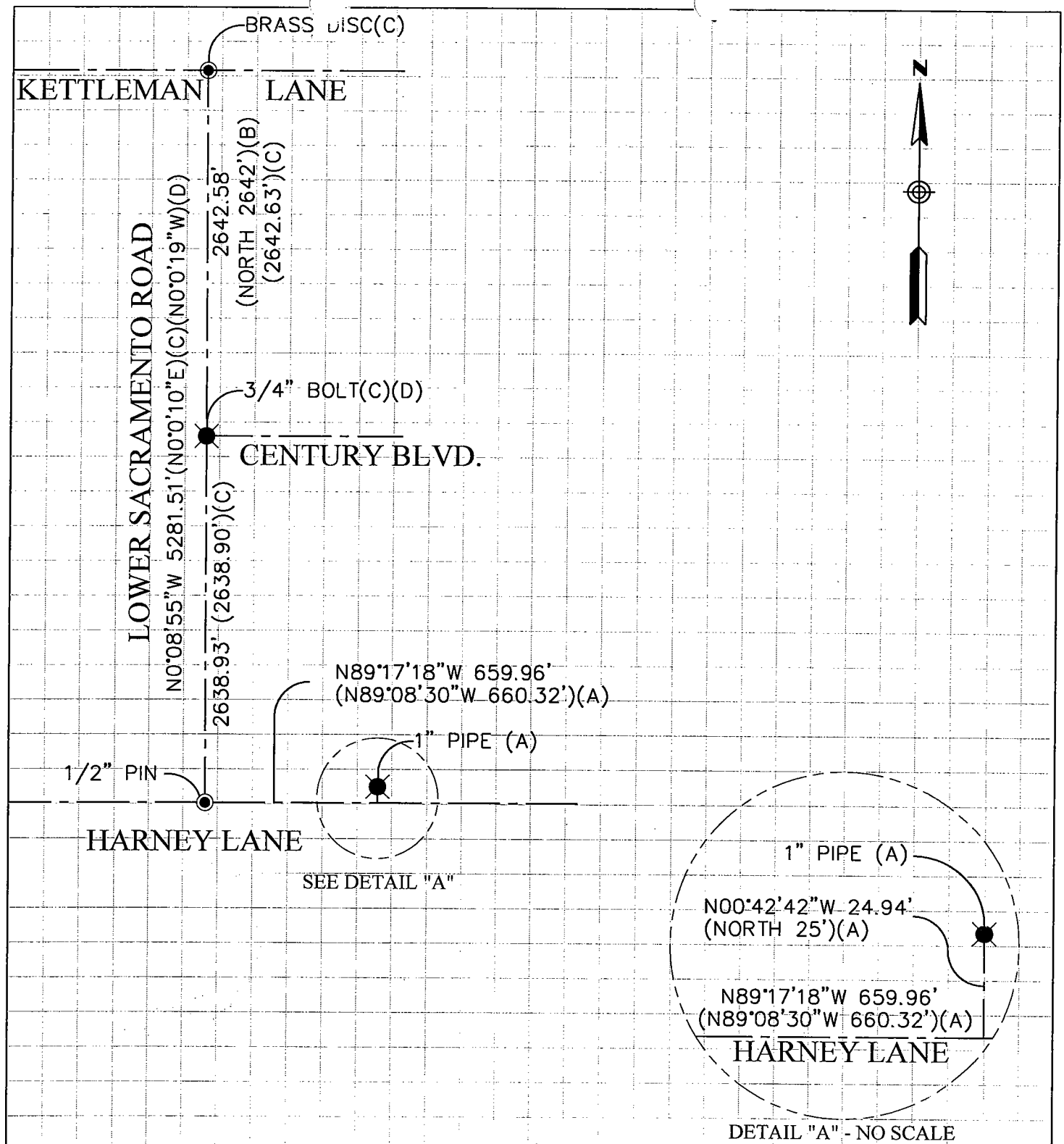
Signed Jeff D. Lund P.L.S. or R.C.E. No.: 4440

Title Assistant County Surveyor

County Surveyor's Comment

This Corner Record is not in compliance with Board Rule 464 (c) regarding submittal within 90 days from date of survey.





LEGEND

● FOUND AS NOTED
IN MONUMENT WELL

✱ FOUND AS NOTED

REFERENCES

- (A) per 17 M&P 128
- (B) per 21 RS 134
- (C) per 28 RS 105
- (D) per 22 PM 65

CORNER RECORD

3/4" BOLT AT LOWER SAC. RD. & CENTURY BLVD.
1/2" PIN AT LOWER SAC. ROAD & HARNEY LN.



MARK THOMAS & COMPANY, INC.
Providing Engineering, Surveying, and Planning Services
7300 Folsom Boulevard, Suite 203
Sacramento, CA 95826
(916) 381-9100

DRAWN. BY <u>Matt DeLeon</u>	APPROVED ON <u>11/26/07</u>	JOB NO. <u>71-51004</u>	PAGE <u>2</u> OF <u>2</u>
DATE <u>11/14/07</u>	BY <u>Matt Stringer</u>	FILE NO.	
SCALE <u>no scale</u>	LS NO. 8151	12/31/2008	