

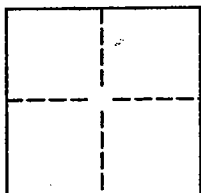
CORNER RECORD

Document Number 07-43

City of _____

County of SAN JOAQUIN, California

Brief Legal Description NORTHWEST CORNER OF INTERSECTION OF ELLIOTT ROAD AND STATE ROUTE 88 IN SECTION 30 OF T4N R8E OF MDB & M



CORNER TYPE

Government Corner ☐ Control ☐
 Meander ☐ Property ☒
 Rancho ☐ Other ☐

Date of Survey 11/17/03

COORDINATES(Optional)

N. _____
 E. _____
 Zone _____ NAD27 ☐ NAD83 ☐
 NAD83 Epoch _____
 Elevation _____
 Vert. Datum: NGVD29 ☐ NAV88 ☐
 Meas. Units: Metric ☒ Imperial ☐

Corner - Left as found ☒ Found and tagged ☐ Established ☐ Reestablished ☐ Rebuilt ☐

Identification and type of corner found: Evidence used to identify or procedure used to establish or reestablish the corner:

FOUND A CHISELED "X" IN THE SIDEWALK AT THE NORTHWEST CORNER OF THE INTERSECTION OF ELLIOTT ROAD AND STATE ROUTE 88. PER MAP 22/RS/131

SET REFERENCE POINTS TO RE-ESTABLISH AFTER CONSTRUCTION. SEE SKETCH.

A description of the physical condition of the monument as found and as set or reset:

MONUMENT WAS FOUND IN GOOD CONDITION.

SURVEYOR'S STATEMENT

This Corner Record was prepared by me or under my direction in conformance with

the Land Surveyor's Act on 25 Oct 2007.

Signed Gregory A. Hartman P.L.S. or R.C.E. Number LS 6166
 For the State of California
 Department of Transportation

COUNTY SURVEYOR'S STATEMENT

This Corner Record was received NOVEMBER 8, 2007 and examined

and filed NOVEMBER 13, 2007.

Signed Jeff D. Lund P.L.S. or R.C.E. Number 4440

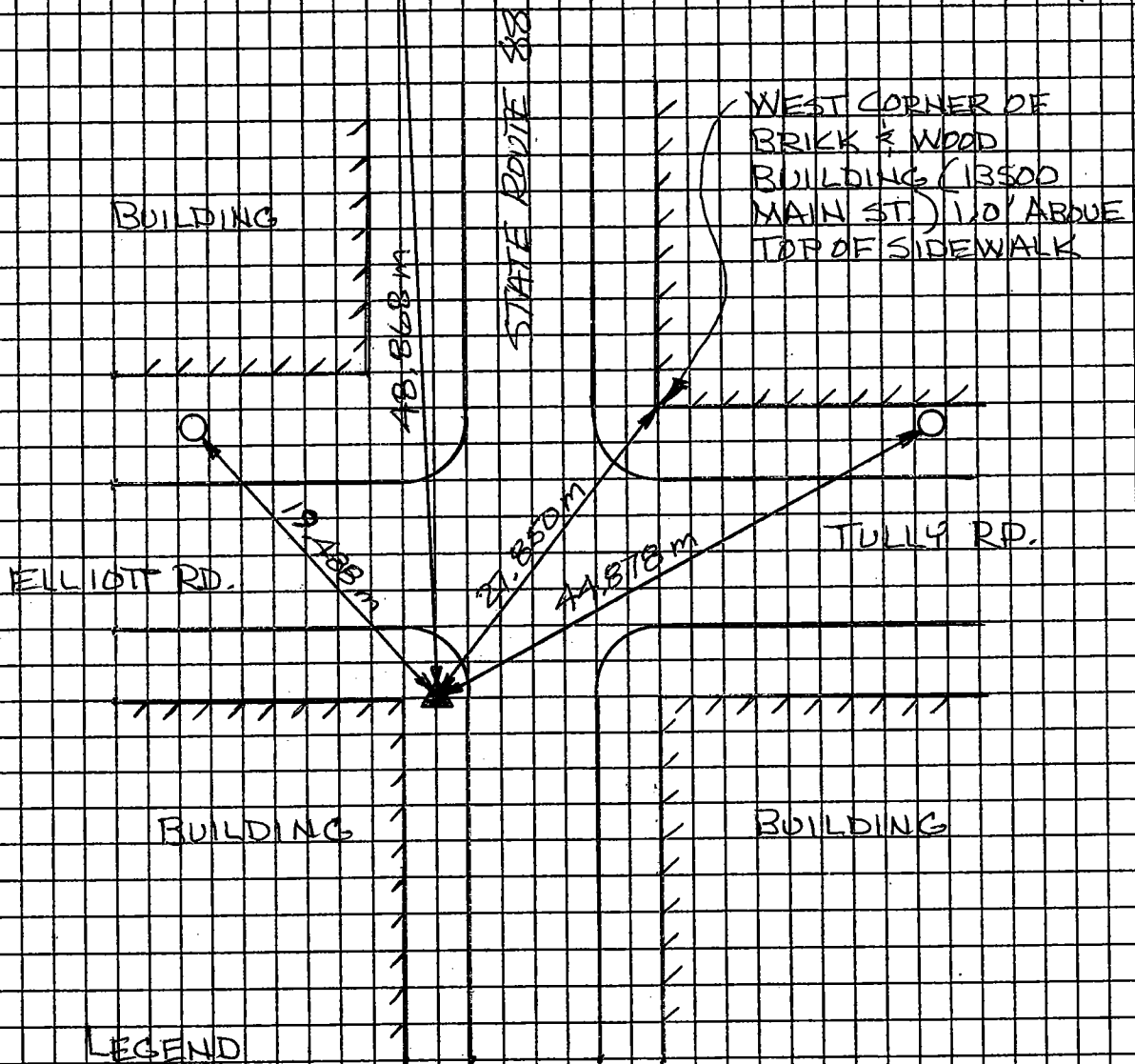
Title Assistant County Surveyor

County Surveyor's Comment THIS CORNER RECORD IS NOT IN COMPLIANCE WITH BOARD RULE 464(C) REGARDING SUBMITTAL WITHIN 90 DAYS FROM THE DATE OF SURVEY.



D.D. SHEET Nos. 9 & 10

FOUND
PK NAIL W/BRASS
WASHER IN A.C.
W/A CONK. NAIL
STRADDLERS



- ▲ FOUND CHISELED "X" IN SIDEWALK
- SET PK NAIL W/BRASS WASHER STAMPED "CALTRANS" IN TELEPHONE POLE