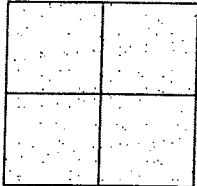


# CORNER RECORD

City of \_\_\_\_\_

Document Number CR-07-32  
County of San Joaquin, California

Brief Legal Description FINE ROAD AT THE INTERSECTION OF EASTERN HEIGHTS ROAD



## CORNER TYPE

Government Corner ☐ Control ☐  
Meander ☐ Property ☐  
Rancho ☐ Other ☒

Date of Survey December 21, 2002

## COORDINATES (Optional)

N. \_\_\_\_\_  
E. \_\_\_\_\_  
Zone \_\_\_\_\_ NAD27 ☐ NAD83 ☐  
NAD83 Epoch \_\_\_\_\_  
Elev. \_\_\_\_\_  
Vert. Datum: NGVD29 ☐ NAVD88 ☐  
Meas. Units: Metric ☐ Imperial ☒

Corner - Left as found ☐ Found and tagged ☐ Established ☐ Reestablished ☐ Rebuilt ☒

Identification and type of corner found: Evidence used to identify or procedure used to establish or reestablish the corner:  
FOUND SPIKE. CONFIRMED LOCATION PER SWING TIES ON CR-01-97. PLACED MONUMENT BOX OVER MONUMENT. SEE SKETCH ON BACKSIDE.

A description of the physical condition of the monument as found and as set or reset:  
FOUND MONUMENT IN GOOD CONDITION. SEE SKETCH ON BACKSIDE.

## SURVEYOR'S STATEMENT

This Corner Record was prepared by me or under my direction in conformance with the Land Surveyors' Act on October 12, 2007.

Signed Manuel Solorio R.C.E. Number C30890

## COUNTY SURVEYOR'S STATEMENT

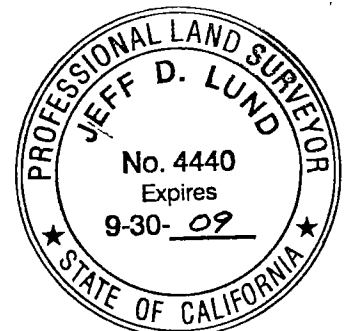
This Corner Record was received OCTOBER 19, 2007 and examined and filed OCTOBER 26, 2007.

Signed Jeff D. Lund P.L.S. No. 4440

Title Assistant County Surveyor

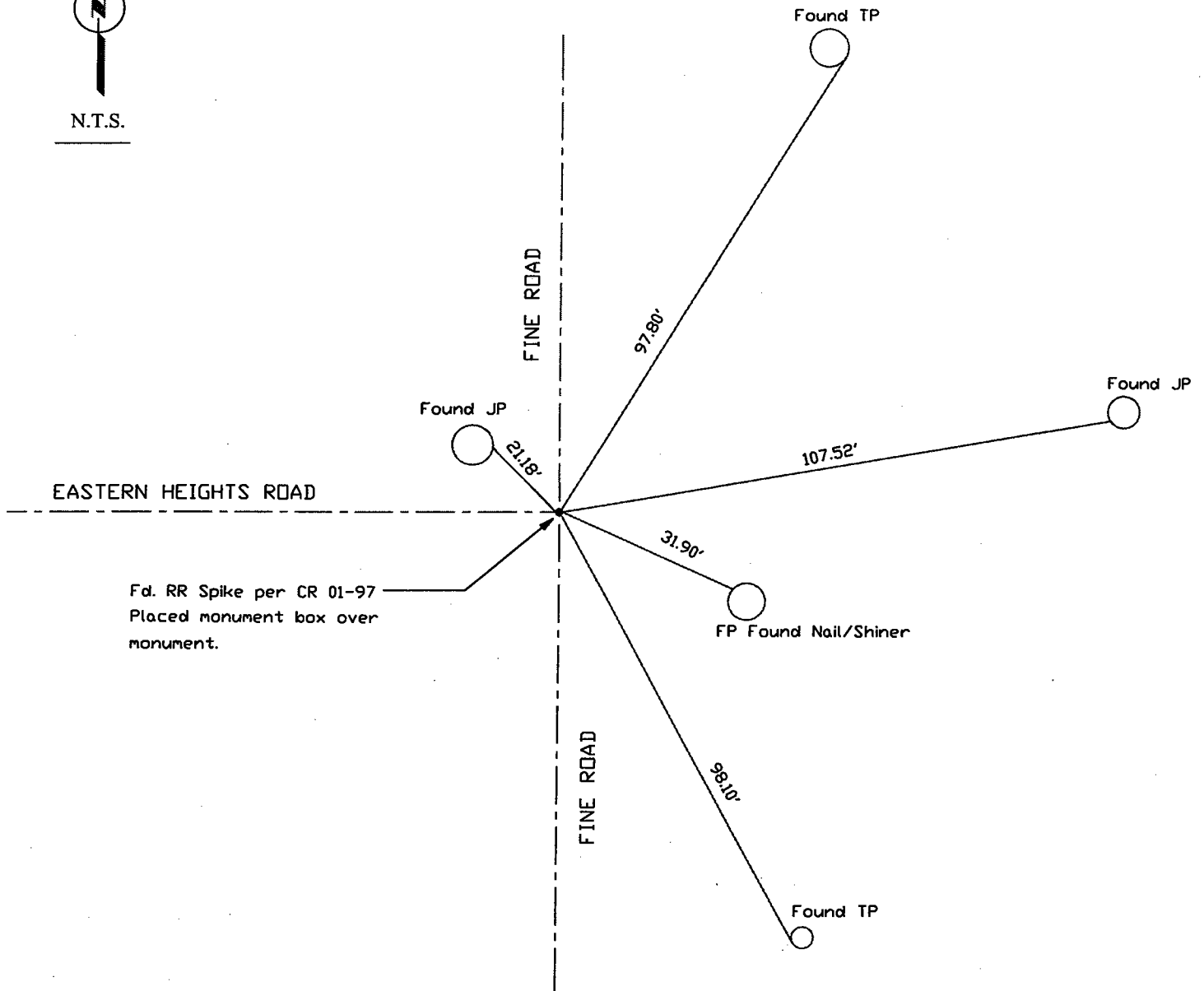
County Surveyor's Comment \_\_\_\_\_

THIS CORNER RECORD IS NOT IN COMPLIANCE WITH BOARD RULE 464(c)  
REGARDING SUBMITTAL WITHIN 90 DAYS FROM THE DATE OF SURVEY.





N.T.S.



Note: Found Monuments are not tagged unless otherwise noted.

"No Attempt Was Made to Verify the Monument(s)"

FP=Fence Post

GP=Guy Post

JP=Joint Pole

PP=Power Pole

SP=Service Pole

TP=Telephone Pole

S.F.N=Searched Found Nothing

N.T.S.=Not To Scale

Set=Conc. Nail with Brass Washer Stamped

"S.J. Co.", unless otherwise noted