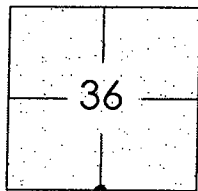


CORNER RECORD

City of _____ Document Number CR-07-31
County of San Joaquin, California
Brief Legal Description BRANDT ROAD, 300'± WEST OF STATE HWY ROUTE 88, SOUTH ¼ CORNER OF SEC. 36, T. 4 N.,
R. 7 E., M. D. B. & M.



T. 4 N., R. 7 E.

CORNER TYPE

Government Corner ☒ Control ☐
Meander ☐ Property ☐
Rancho ☐ Other ☐

Date of Survey March 03, 2006

COORDINATES (Optional)

N. _____
E. _____
Zone _____ NAD27 ☐ NAD83 ☐
NAD83 Epoch _____
Elev. _____
Vert. Datum: NGVD29 ☐ NAVD88 ☐
Meas. Units: Metric ☐ Imperial ☒

Corner - Left as found ☒ Found and tagged ☐ Established ☐ Reestablished ☐ Rebuilt ☐

Identification and type of corner found: Evidence used to identify or procedure used to establish or reestablish the corner:
SEE SKETCH ON BACKSIDE.

A description of the physical condition of the monument as found and as set or reset: _____
FOUND IRON PIN IN GOOD CONDITION. SEE SKETCH ON BACKSIDE.

SURVEYOR'S STATEMENT

This Corner Record was prepared by me or under my direction in conformance with
the Land Surveyors' Act on October 18, 2007.

Signed Manuel Solorio R.C.E. Number C30890

COUNTY SURVEYOR'S STATEMENT

This Corner Record was received OCTOBER 19, 2007 and examined
and filed OCTOBER 26, 2007.

Signed Jeff D. Lund P.L.S. No. 4440

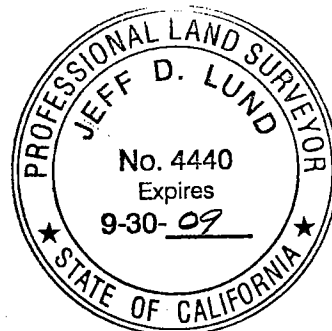
Title Asst. County Surveyor

County Surveyor's Comment _____

THIS CORNER RECORD IS NOT IN COMPLIANCE WITH SECTION 8773.2 (b) OF THE
PLS ACT REGARDING RESUBMITTAL WITHIN 60 DAYS.

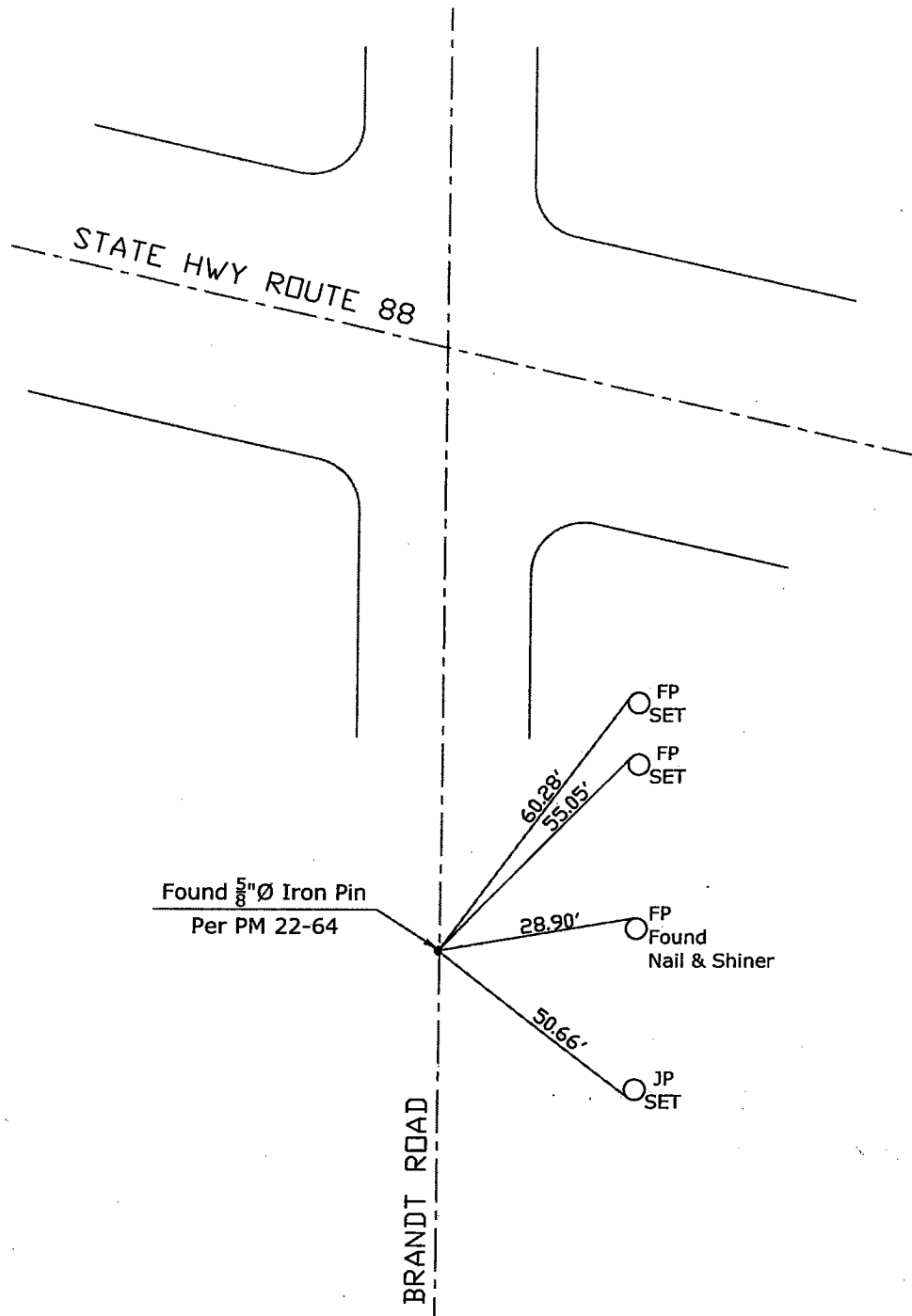


Manuel Solorio





N.T.S.



Note: Found Monuments are not tagged
nor of record, unless otherwise noted.

"No Attempt Was Made to Verify the Monument(s)"

FP=Fence Post
GP=Guy Post
JP=Joint Pole
PP=Power Pole
SP=Service Pole
TP=Telephone Pole
S.F.N=Searched Found Nothing
N.T.S.=Not To Scale
Set=Conc. Nail with Brass Washer Stamped
"S.J. Co.", unless otherwise noted