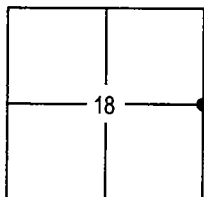


CORNER RECORD

Document Number 07-30City of RIPONCounty of SAN JOAQUIN, CaliforniaBrief Legal Description EASTERLY 1/4 CORNER OF SECTION 18, T.2 S., R.8 E.,
M.D.B.&M.**CORNER TYPE**Government Corner ☒ Control ☐
Meander ☐ Property ☐
Rancho ☐ Other ☐Date of Survey 4-30-07**COORDINATES (Optional)**N _____
E _____
Zone _____ NAD27 ☐ NAD83 ☐
NAD83 Epoch _____
Elevation _____
Vert. Datum: NGVD29 ☐ NADV88 ☐
Meas Units: Metric ☐ Imperial ☐**Corner -** Left as found ☐ Found and tagged ☐ Established ☐ Reestablished ☒ Rebuilt ☐Identification and type of corner found: Evidence used to identify or procedure used to establish or reestablish the corner:
FOUND 2 1/2 INCH BRASS DISK STAMPED L.S. 6953. FOUND PER CORNER RECORD 06-20 OF SAN JOAQUIN COUNTY
SURVEYOR RECORDS. MONUMENT WAS DESTROYED DURING THE CONSTRUCTION OF STREET IMPROVEMENTS AT THE
INTERSECTION OF RIVER ROAD AND NORTH RIPON ROAD.

A description of the physical condition of the monument as found and as set or reset: _____

SET 2 1/2 INCH BRASS DISK STAMPED PLS 7049 IN MONUMENT WELL, PER CORNER RECORD 06-20.SEE SKETCH ON PG. 2 OF 2**SURVEYOR'S STATEMENT**

This Corner Record was prepared by me or under my direction in conformance with

the Land Surveyors' Act on APRIL 30, 2007.Signed [Signature] P.L.S. Number 7049**COUNTY SURVEYOR'S STATEMENT**This Corner Record was received SEPTEMBER 24, 2007 and examinedand filed SEPTEMBER 27, 2007.Signed [Signature] P.L.S. or R.C.E. Number 4440Title ASST. County Surveyor

County Surveyor's Comment _____

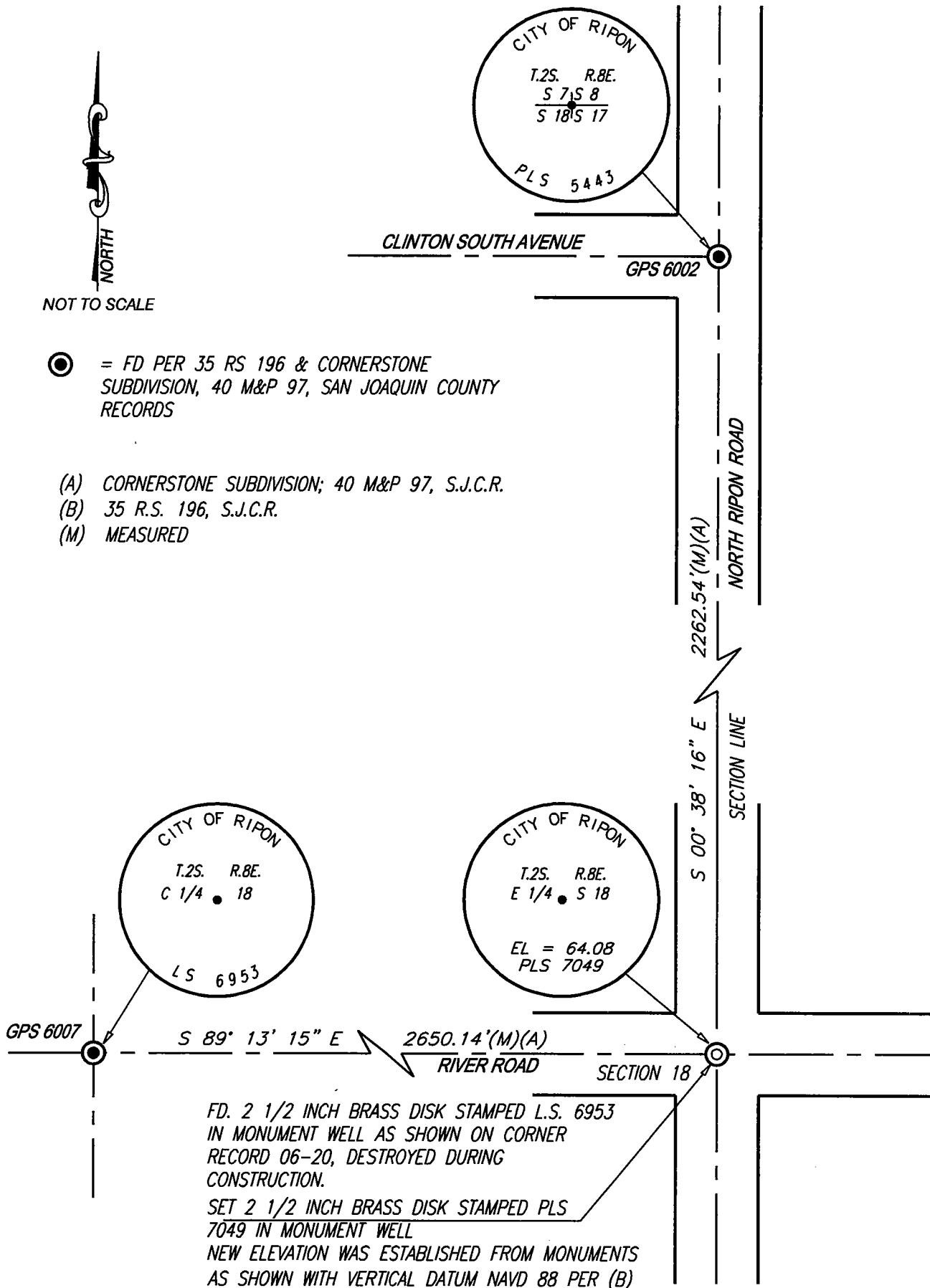




NOT TO SCALE

● = FD PER 35 RS 196 & CORNERSTONE
SUBDIVISION, 40 M&P 97, SAN JOAQUIN COUNTY
RECORDS

- (A) CORNERSTONE SUBDIVISION; 40 M&P 97, S.J.C.R.
- (B) 35 R.S. 196, S.J.C.R.
- (M) MEASURED



FD. 2 1/2 INCH BRASS DISK STAMPED L.S. 6953
IN MONUMENT WELL AS SHOWN ON CORNER
RECORD 06-20, DESTROYED DURING
CONSTRUCTION.
SET 2 1/2 INCH BRASS DISK STAMPED PLS
7049 IN MONUMENT WELL
NEW ELEVATION WAS ESTABLISHED FROM MONUMENTS
AS SHOWN WITH VERTICAL DATUM NAVD 88 PER (B)