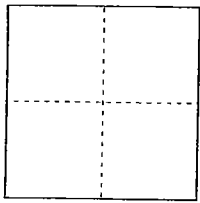
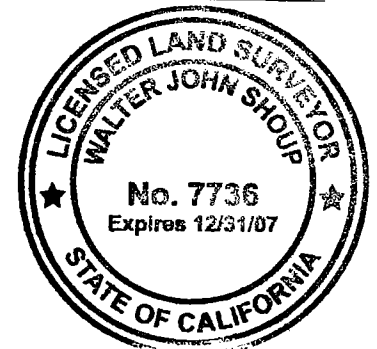
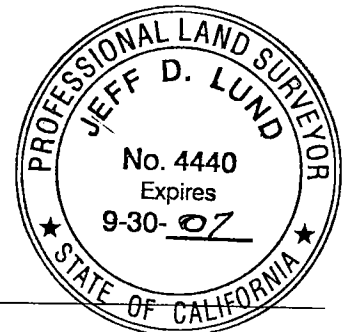


CORNER RECORDCity of STOCKTONDocument Number 07-13
County of San Joaquin, CaliforniaBrief Legal Description LOT 21, MAPS AND PLATS 29-7, SAN JOAQUIN COUNTY RECORDS, LYING
WITHIN SECTION 48 OF THE C.M. WEBER GRANT**CORNER TYPE**Government Corner ☐ Control ☒
Meander ☐ Property ☒
Rancho ☐ Other ☐Date of Survey APRIL 3, 2007**COORDINATES (Optional)**N. _____
E. _____
Zone _____ NAD27 NAD83
NAD83 Epoch _____
Elev. _____
Vert. Datum: NGVD29 NAVD88
Meas. Units: Metric Imperial ☒**Corner -** Left as found ☒ Found and tagged _____ Established _____ Reestablished _____ Rebuilt _____

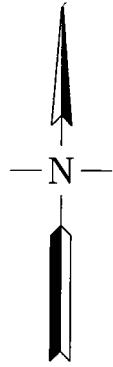
Identification and type of corner found: Evidence used to identify or procedure used to establish or reestablish the corner:

FOUND 3/4" IRON PIN TAGGED "RCE 15831" PER M.&P. 29-7, S.J.C.R.(SEE REVERSE SIDE FOR BOUNDARY DATA)

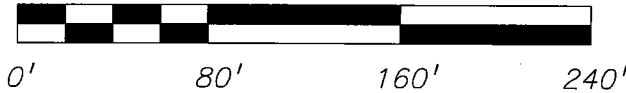
A description of the physical condition of the monument as found and as set or reset:

STREET CENTERLINE MONUMENT AND PROPERTY CORNER FOUND IN GOOD CONDITION**SURVEYOR'S STATEMENT**This Corner Record was prepared by me or under my direction in conformance with
the Land Surveyors' Act on APRIL 17, 2007.Signed Walter John Shoup P.L.S. No. 7736**COUNTY SURVEYOR'S STATEMENT**This Corner Record was received APRIL 17, 2007 and examined
and filed APRIL 20, 2007.Signed Jeff D. Lund P.L.S. No. 4440Title Assistant County Surveyor

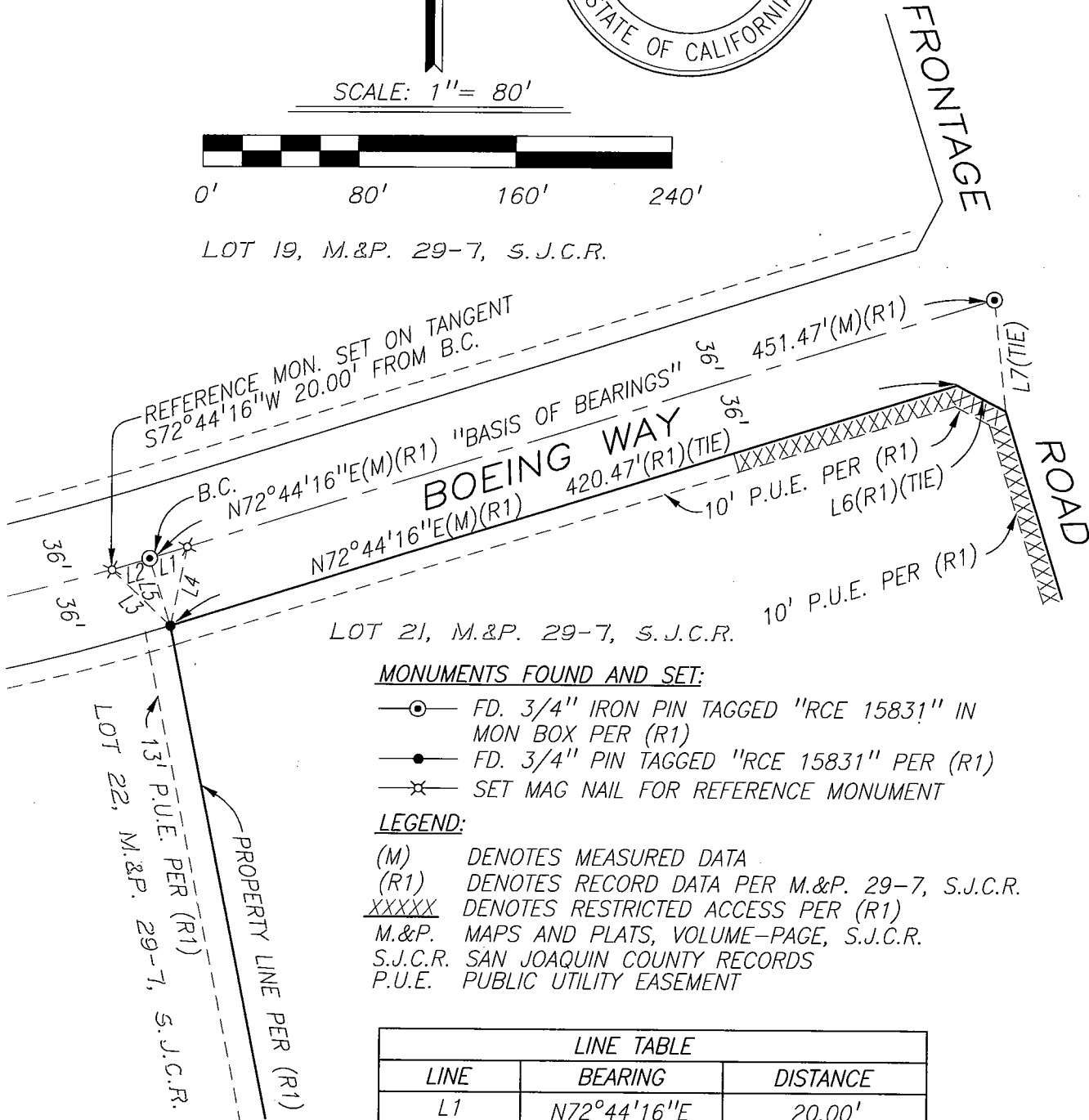
County Surveyor's Comment _____



SCALE: 1" = 80'



LOT 19, M.&P. 29-7, S.J.C.R.



MONUMENTS FOUND AND SET:

- FD. 3/4" IRON PIN TAGGED "RCE 15831" IN MON BOX PER (R1)
- FD. 3/4" PIN TAGGED "RCE 15831" PER (R1)
- ✕— SET MAG NAIL FOR REFERENCE MONUMENT

LEGEND:

- (M) DENOTES MEASURED DATA
- (R1) DENOTES RECORD DATA PER M.&P. 29-7, S.J.C.R.
- XXXXX DENOTES RESTRICTED ACCESS PER (R1)
- M.&P. MAPS AND PLATS, VOLUME-PAGE, S.J.C.R.
- S.J.C.R. SAN JOAQUIN COUNTY RECORDS
- P.U.E. PUBLIC UTILITY EASEMENT

LINE TABLE		
LINE	BEARING	DISTANCE
L1	N72°44'16"E	20.00'
L2	S72°44'16"W	20.00'
L3	N46°19'01"W	41.18'
L4	S11°47'33"W	41.18'
L5	N17°15'44"W	36.00'
L6	N62°15'44"W	28.28'
L7	N06°08'50"W	57.07'