

CORNER RECORD

Document Number 07-04

City of _____

County of SAN JOAQUIN, CaliforniaBrief Legal Description IN SEC 1, T. 1S., R. 5E.

CORNER TYPE

Government Corner ☐ Control ☐
Meander ☐ Property ☐
Rancho ☐ Other ☒

Date of Survey 10-2-06

COORDINATES(Optional)

N. _____
E. _____
Zone _____ NAD27 ☐ NAD83 ☐
NAD83 Epoch _____
Elev. _____
Vert. Datum: NGVD29 ☐ NADV88 ☐
Meas. Units: Metric ☐ Imperial ☐

Corner - Left as found ☒ Found and tagged ☐ Established ☐ Reestablished ☐ Rebuilt ☐

Identification and type of corner found: Evidence used to identify or procedure used to establish or reestablish the corner:

FOUND OLD RAILROAD SPIKE IN THE CENTERLINE
OF OLD HOWARD RD. AS SHOWN ON MAP OF
SURVEY FOR ALICE M. WOODS ESTATE FILED
IN VOL. 3 PG 46 S. J. CO. RECORDS

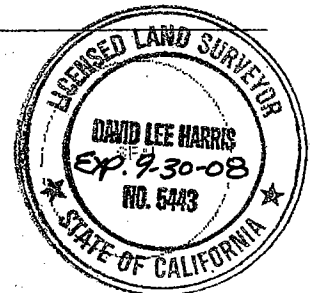
A description of the physical condition of the monument as found and as set or reset:

CONDITION OF RAILROAD SPIKE IN FAIR
CONDITION. LEFT AS FOUND.

SURVEYOR'S STATEMENT

This Corner Record was prepared by me or under my direction in conformance with
the Land Surveyor's Act on Feb 6, 2007.

Signed David Lee Harris P.L.S. or R.C.E. No.: EXP. 9-30-08



COUNTY SURVEYOR'S STATEMENT

This Corner Record was received FEBRUARY 13, 2007 and examined
and filed FEBRUARY 15, 2007

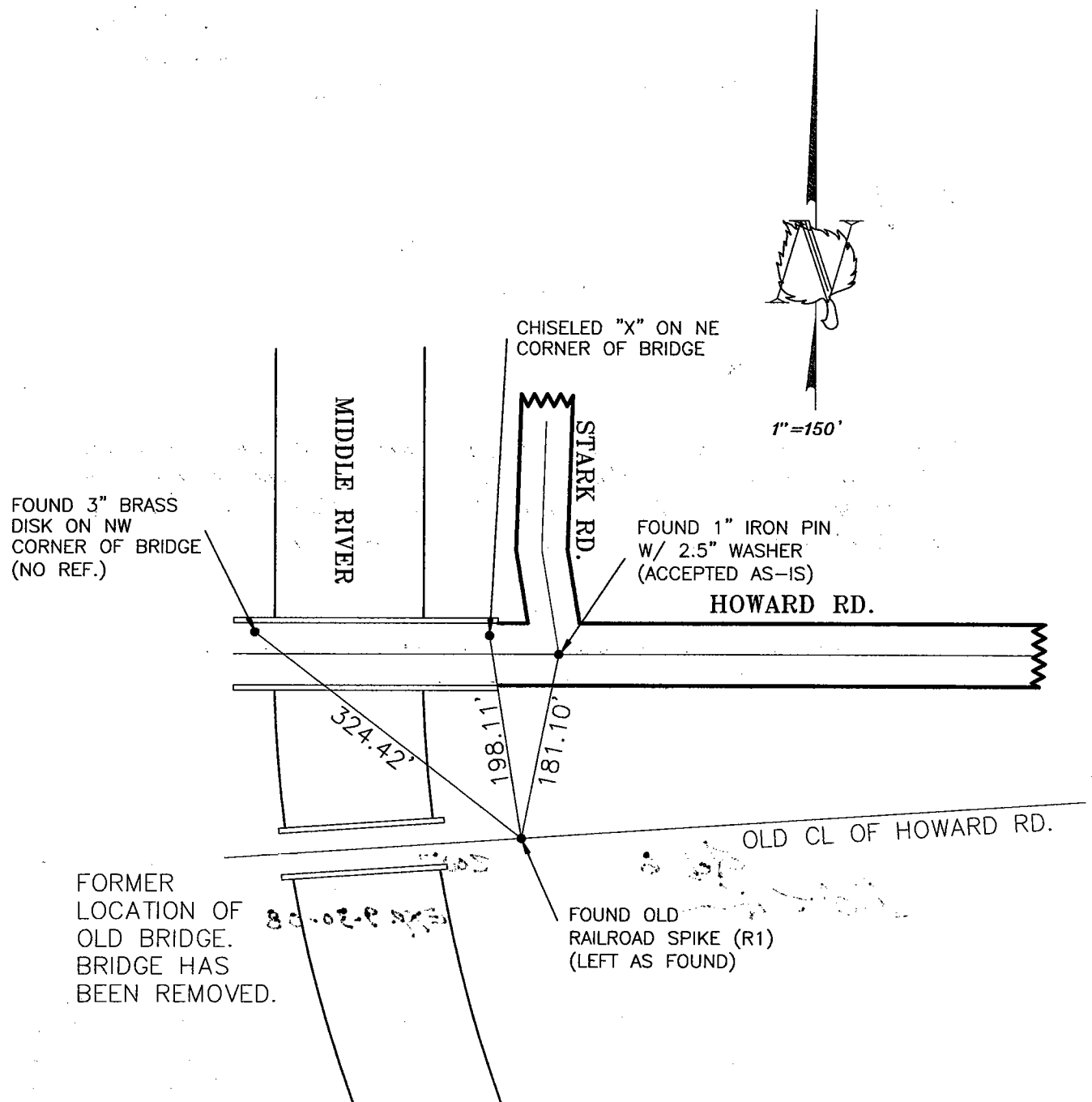
Signed Jeff D. Lund P.L.S. or R.C.E. No.: LS 4440

Title Assistant County Surveyor

County Surveyor's Comment _____

D.D. SHEET NO. 49

CORNER RECORD



ASPEN SURVEY COMPANY
1121 OAKDALE RD., STE. 5 MODESTO, CA 95355
PH: (209) 526-9724 PH: (800) 526-9724
FX: (209) 526-0472

LEGEND

- MONUMENT FOUND AS NOTED
- (R1) RECORD OF SURVEY
- VOL. 3 PG. 46