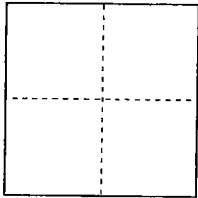


# CORNER RECORD

City of \_\_\_\_\_

Document Number 06-24  
County of San Joaquin, California

Brief Legal Description Retracement boundary survey of Lot 61 per Maps and Plats 14-34, San Joaquin County Records, located at N.W. corner of Balsam Drive and Garnet Avenue.



## CORNER TYPE

Government Corner ☐ Control ☐  
Meander ☐ Property X  
Rancho ☐ Other ☐

Date of Survey \_\_\_\_\_

## COORDINATES (Optional)

N. \_\_\_\_\_  
E. \_\_\_\_\_  
Zone \_\_\_\_\_ NAD27 9 NAD83  
NAD83 Epoch \_\_\_\_\_  
Elev. \_\_\_\_\_  
Vert. Datum: NGVD2 ☐ NAVD88 ☐  
Meas. Units: Metric ☐ Imperial ☒

Corner - Left as found ☐ Found and tagged ☐ Established ☐ Reestablished ☒ Rebuilt ☐

Identification and type of corner found: Evidence used to identify or procedure used to establish or reestablish the corner:

Property corners for Lot 61, M.&P. 14-34, S.J.C.R. were reestablished based on found monuments as shown on San Joaquin County Surveyor's field books 619, pages 27-30 and book 645, pages 35-40 on file at the County Surveyor's office.

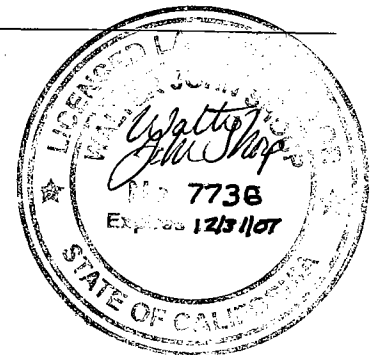
A description of the physical condition of the monument as found and as set or reset: \_\_\_\_\_

Set 3/4" x 30" rebar with cap stamped "LS 7736"

## SURVEYOR'S STATEMENT

This Corner Record was prepared by me or under my direction in conformance with the Land Surveyors' Act on August 28, 2006.

Signed Walter John Shoup L.S. Number 7736



## COUNTY SURVEYOR'S STATEMENT

This Corner Record was received SEPTEMBER 25, 2006 and examined and filed SEPTEMBER 29, 2006.

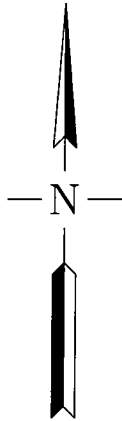
Signed Jeff D. Lund P.L.S. No. 4440

Title Assistant County Surveyor

County Surveyor's Comment \_\_\_\_\_



(D.D. Sheet No. 27 )

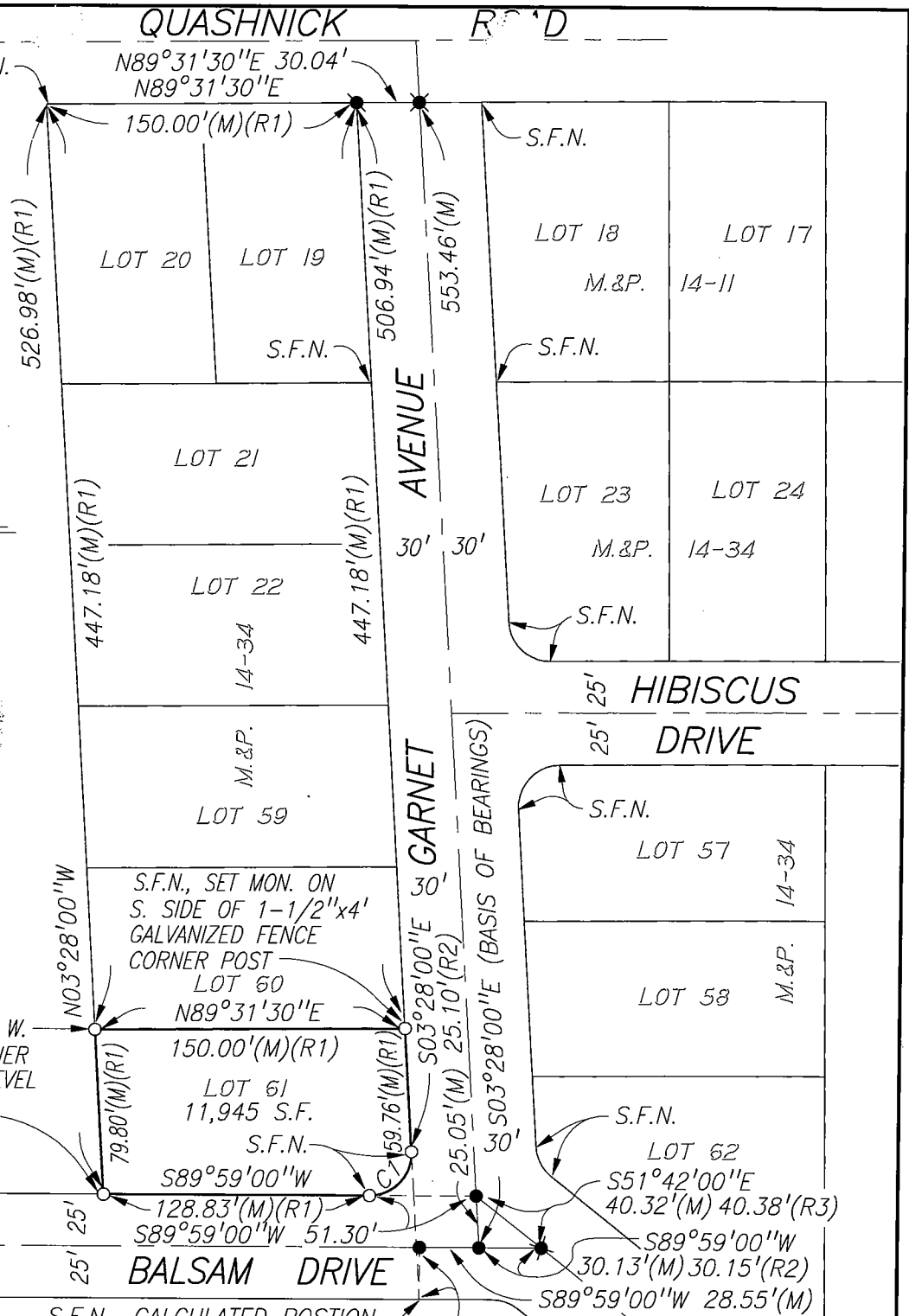


SCALE: 1" = 80'



SET MAG NAIL, NO TAG, ON W. SIDE OF 4"x4" FENCE CORNER IN CONCRETE AT GROUND LEVEL

S.F.N., SET MON. ON S. SIDE OF 1-1/2" x 4' GALVANIZED FENCE CORNER POST



**LEGEND:**

S.F. SQUARE FEET  
S.F.N. SEARCHED, FOUND NOTHING  
M.&P. MAPS AND PLATS, VOLUME-PAGE, S.J.C.R.  
S.J.C.R. SAN JOAQUIN COUNTY RECORDS  
S.J.C.S.R. SAN JOAQUIN COUNTY SURVEYOR'S RECORDS

**REFERENCES:**

(R1) M.&P. 14-34  
(R2) S.J.C.S.R. F.B. BK 619, PAGES 27-30  
(R3) S.J.C.S.R. F.B. BK 645, PAGES 35-40  
(R4) M.&P. 14-11

S.F.N., CALCULATED POSITION OF R/W MONUMENT PER (R1)(R3)

**MONUMENTS FOUND AND SET:**

- SET 3/4"x30" REBAR WITH CAP STAMPED "LS 7736", UNLESS SHOWN OTHERWISE
- FD. 1" IRON PIPE PER (R4), NO TAG
- FD. PK NAIL PER (R2)
- FD. PK NAIL PER (R3)

**CURVE TABLE**

CURVE	RADIUS	DELTA	LENGTH	CHORD
C1	20.00'	93°27'00"	32.62'	S43°15'30"W 29.12'