

CORNER RECORD

Document Number 06-21

City of RIPON County of SAN JOAQUIN, California

Brief Legal Description SOUTH QUARTER CORNER SECTION 18, T.2S.,R.8E., M.D.B.&M.

18	17
19	20

T.2 S., R.8 E.

CORNER TYPE

Government Corner ☒ Control ☐
 Meander ☐ Property ☐
 Rancho ☐ Other ☐
 Date of Survey 04-17-06

COORDINATES (Optional)

N. _____
 E. _____
 Zone _____ NAD27 ☐ NAD83 ☒
 NAD83 Epoch _____
 Elev. _____
 Vert. Datum: NGVD29 ☐ NAVD88 ☐
 Meas. Units: Metric ☐ Imperial ☐

Corner — Left as found ☐ Found and tagged ☐ Established ☐ Reestablished ☒ Rebuilt ☐

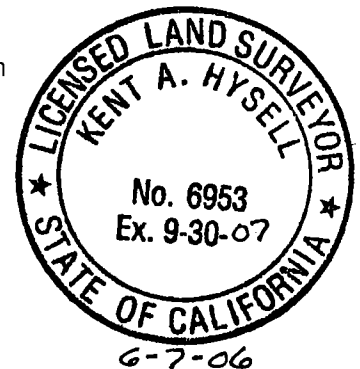
Identification and type of corner found: Evidence used to identify or procedure used to establish or reestablished the corner:
MONUMENTATION WAS DESTROYED WITH THE CONSTRUCTION OF STREET IMPROVEMENTS AT THE SOUTH
QUARTER CORNER OF SECTION 18 IN T.2 S., R.8 E., M.D.B.&M., OF SAN JOAQUIN COUNTY RECORDS.
RE-ESTABLISHED USING MONUMENTS FOUND PER 40-M.&P.-25.

A description of the physical condition of the monument as found and as set or reset: SET 2 1/2" BRASS DISK STAMPED LS 6953 IN MONUMENT WELL.

SURVEYOR'S STATEMENT

This Corner Record was prepared by me or under my direction in conformance with the Land Surveyors' Act on JUNE 7, 2006.

Signed [Signature] L.S. 6953

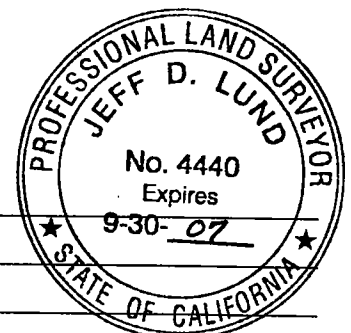


COUNTY SURVEYOR'S STATEMENT

This Corner Record was received JUNE 8, 2006 and examined and filed JUNE 16, 2006.

Signed [Signature] P.L.S. No. 4440

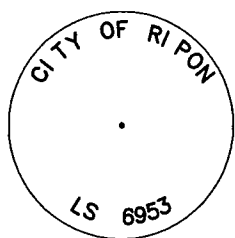
Title Asst. County Surveyor



County Surveyor's Comment _____



NOT TO SCALE



MONUMENT DETAIL

FD. 2 1/2" BRASS DISK
TAGGED L.S. 6953 PER (R1)
IN MON. WELL AT THE
CENTER OF SECTION 18

1/4 SECTION LINE

RIVER ROAD

931.43'
(R1)(M)

FD. 3/4" IRON PIPE
TAGGED L.S. 6953 PER (R1)
IN MON. WELL

357.44'
(R1)(M)

CHESAPEAKE II
38-M.&P.-8

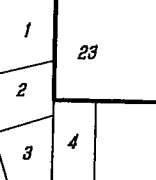
SANTOS AVE.

2645.81'(M) (R1)

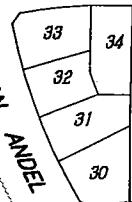
1/4 SECTION LINE

N 0°05'28" E

(R1)(M)



JOHN KAMPS WAY



CHESAPEAKE V
40-M.&P.-25

1173.95'

LOT "A"
PER (R1)

FOUND 3/4" IRON PIPE
TAGGED L.S. 6953
PER (R1)

L.S. 6953

T2 S 18 R8
S 19

APRIL 2006

MONUMENT DETAIL

N 0°05'28" E

182.99'
(R1)(M)

SEC. 18

SEC. 18

SEC. 19

SET 2 1/2" BRASS DISK
STAMPED L.S. 6953
IN MON. WELL

LEGEND

(M) MEASURED ON THIS SURVEY

(R1) 40-M.&P.-25

M.&P. MAPS AND PLATS