

# CORNER RECORD

Document Number 06-19

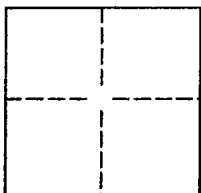
City of                     

County of SAN JOAQUIN, California

Brief Legal Description AT THE INTERSECTION OF BAKER ROAD & STATE ROUTE 88  
IN SECTION 88 OF THE C.M. WEBER GRANT.

## CORNER TYPE

## COORDINATES(Optional)



Government Corner ☐ Control ☐  
Meander ☐ Property ☐  
Rancho ☐ Other ☒

Date of Survey 10/24/05

N.                       
E.                       
Zone                      NAD27 ☐ NAD83 ☐  
NAD83 Epoch                       
Elevation                       
Vert. Datum: NGVD29 ☐ NAV88 ☐  
Meas. Units: Metric ☐ Imperial ☒

Corner - Left as found ☒ Found and tagged ☐ Established ☐ Reestablished ☐ Rebuilt ☐

Identification and type of corner found: Evidence used to identify or procedure used to establish or reestablish the corner:

FOUND BOLT & WASHER IN MONUMENT WELL WITH BROKEN LID  
IN WELL. MONUMENT IS DOWN 0.7' BELOW A.C. SURFACE.

A description of the physical condition of the monument as found and as set or reset:

MONUMENT WAS FOUND IN GOOD CONDITION.

## SURVEYOR'S STATEMENT

This Corner Record was prepared by me or under my direction in conformance with

the Land Surveyor's Act on MAY 25, 2006.

Signed [Signature] P.L.S. or R.C.E. Number 8022

For the State of California  
Department of Transportation

## COUNTY SURVEYOR'S STATEMENT

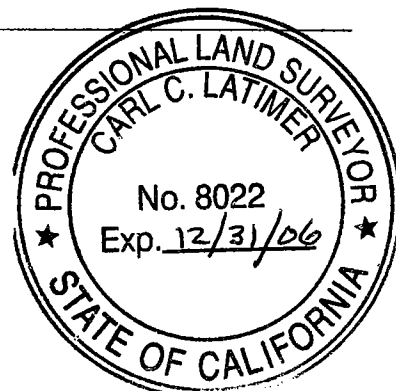
This Corner Record was received MAY 30, 2006 and examined

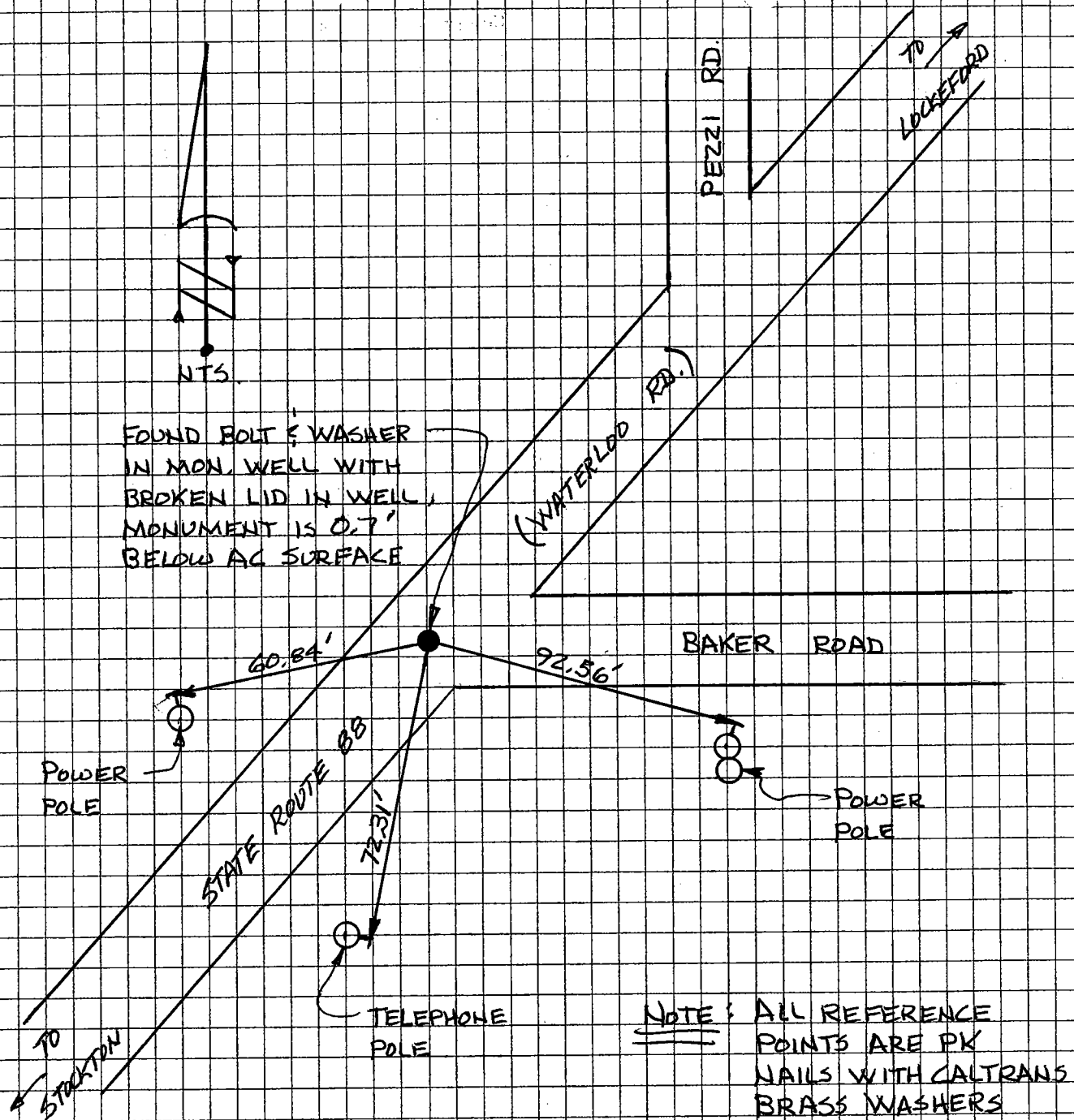
and filed JUNE 9, 2006.

Signed [Signature] P.L.S. or R.C.E. Number 4440

Title ASSISTANT COUNTY SURVEYOR

County Surveyor's Comment                     





THE TIES SHOWN HEREON ARE FOR THE PURPOSE OF  
PERPETUATING THE MONUMENTATION CURRENTLY EXISTING.  
NO ATTEMPT WAS MADE TO DETERMINE THE VALIDITY  
OF THE MONUMENTS OR THEIR PROPER LOCATION IN  
RELATION TO LEGAL BOUNDARY LINES IN THE AREA.