

CORNER RECORD

Document Number 06-18

City of _____

County of SAN JOAQUIN, California

Brief Legal Description APPROX. 1900' SOUTHWEST OF ALPINE ROAD ALONG THE CENTERLINE
OF STATE ROUTE 88 IN SECTION 82 OF THE C.M. WEBER GRANT

CORNER TYPE

COORDINATES(Optional)

Government Corner ☐ Control ☐
 Meander ☐ Property ☐
 Rancho ☐ Other ☒

Date of Survey 10/24/05

N. .

E.

Zone NAD27 ☐ NAD83 ☐

NAD83 Epoch

Elevation

Vert. Datum: NGVD29 ☐ NAV88 ☐

Meas. Units: Metric ☐ Imperial ☒

Corner - Left as found ☒ Found and tagged ☐ Established ☐ Reestablished ☐ Rebuilt ☐

Identification and type of corner found: Evidence used to identify or procedure used to establish or reestablish the corner:

FOUND $\frac{1}{4}$ " x $\frac{1}{4}$ " SQUARE IRON ROD WITH NO TAG IN MONUMENT WELL WITHOUT LID. MONUMENT IS DOWN 1.0' BELOW THE A.C. SURFACE.

A description of the physical condition of the monument as found and as set or reset:

MONUMENT WAS FOUND IN GOOD ~~COND~~ CONDITION.

SURVEYOR'S STATEMENT

This Corner Record was prepared by me or under my direction in conformance with

the Land Surveyor's Act on MAY 25, 2006

Signed [Signature] P.L.S. or ~~R.G.E.~~ Number 8022

For the State of California
Department of Transportation

COUNTY SURVEYOR'S STATEMENT

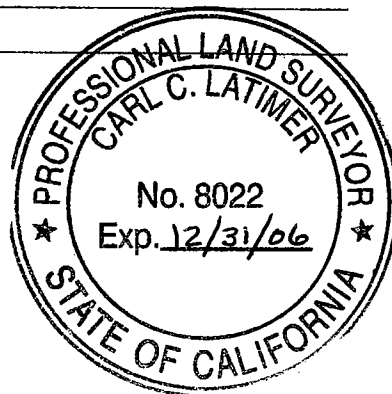
This Corner Record was received MAY 30, 2006 and examined

and filed JUNE 9, 2006

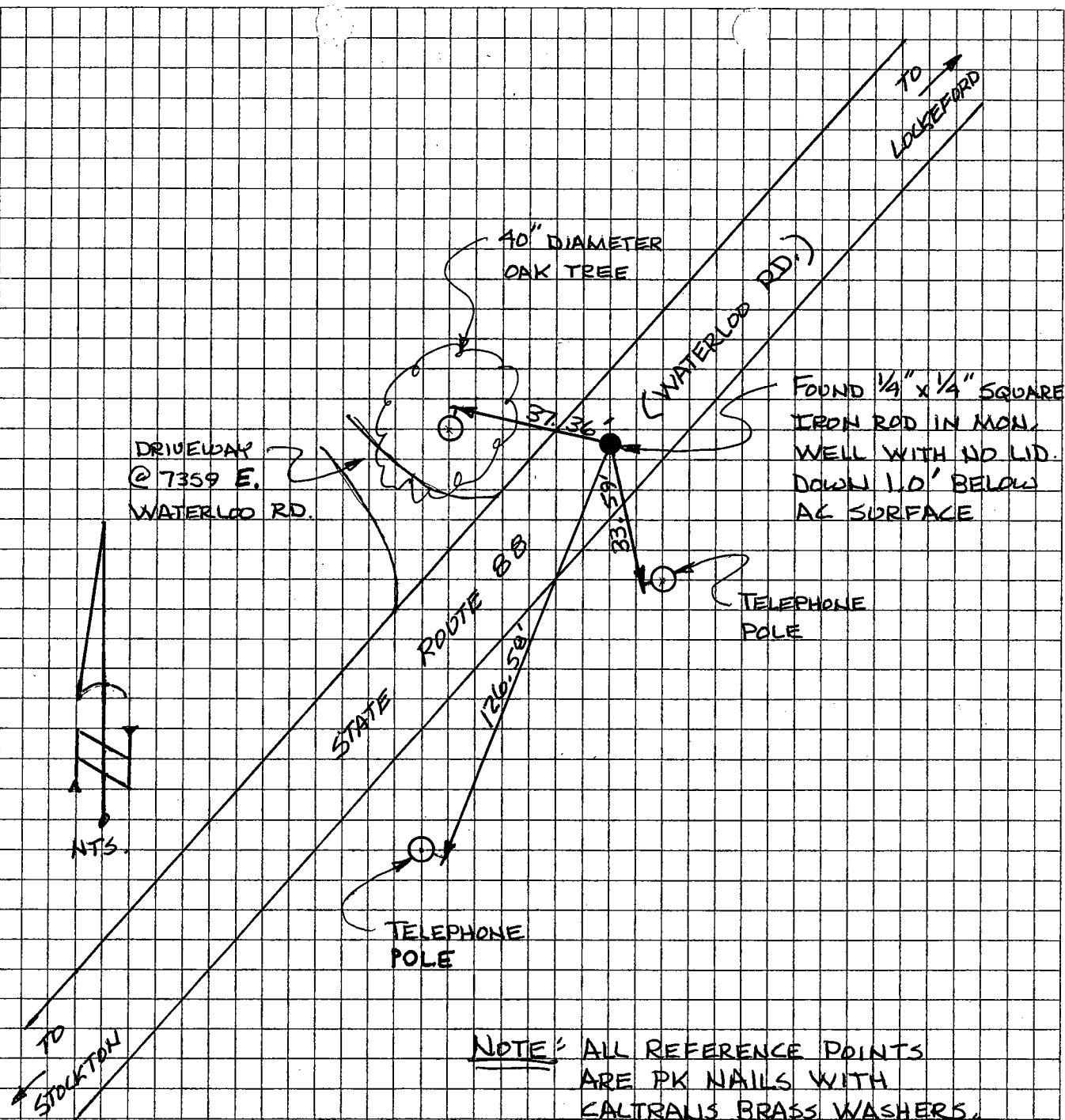
Signed [Signature] P.L.S. or R.G.E. Number 4440

Title Assistant County Surveyor

County Surveyor's Comment



(D.D. SHEET NO. 33)



THE TIES SHOWN HEREON ARE FOR THE PURPOSE OF PERPETUATING THE MONUMENTATION CURRENTLY EXISTING. NO ATTEMPT WAS MADE TO DETERMINE THE VALIDITY OF THE MONUMENTS OR THEIR PROPER LOCATION IN RELATION TO LEGAL BOUNDARY LINES IN THE AREA.