

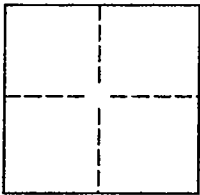
CORNER RECORD

Document Number 06-17

City of

County of SAN JOAQUIN, California

Brief Legal Description AT THE INTERSECTION OF FAIRCHILD LANE AND STATE ROUTE 88 IN SECTION 72 OF THE C.M. WEBER GRANT



CORNER TYPE

Government Corner ☐ Control ☐
 Meander ☐ Property ☐
 Rancho ☐ Other ☒

Date of Survey 10/24/05

COORDINATES(Optional)

N.
 E.
 Zone NAD27 ☐ NAD83 ☐
 NAD83 Epoch
 Elevation
 Vert. Datum: NGVD29 ☐ NAV88 ☐
 Meas. Units: Metric ☐ Imperial ☒

Corner - Left as found ☒ Found and tagged ☐ Established ☐ Reestablished ☐ Rebuilt ☐

Identification and type of corner found: Evidence used to identify or procedure used to establish or reestablish the corner:

FOUND 1/4" x 1/4" SQUARE IRON ROD IN MONUMENT WELL WITH NO TAG. MONUMENT IS 1.1' BELOW A.C. PAVEMENT

A description of the physical condition of the monument as found and as set or reset:

MONUMENT FOUND IN GOOD CONDITION

SURVEYOR'S STATEMENT

This Corner Record was prepared by me or under my direction in conformance with

the Land Surveyor's Act on MAY 25, 2006.

Signed [Signature] P.L.S. or R.C.E. Number 8022

For the State of California
 Department of Transportation

COUNTY SURVEYOR'S STATEMENT

This Corner Record was received MAY 30, 2006 and examined

and filed JUNE 9, 2006.

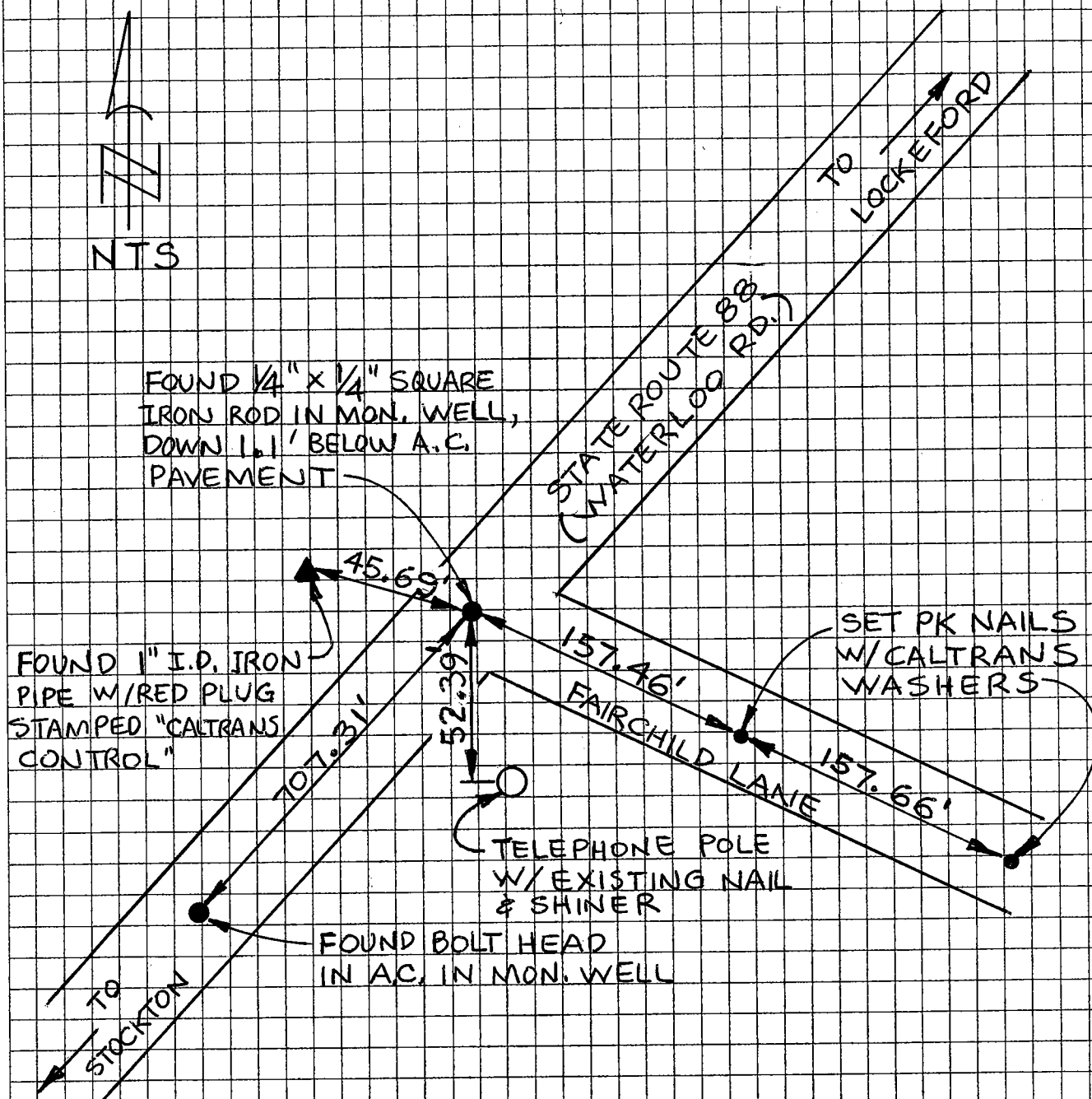
Signed [Signature] P.L.S. or R.C.E. Number 4440

Title ASSISTANT County Surveyor

County Surveyor's Comment



(D.D. SHEET NO. 33)



THE TIES SHOWN HEREON ARE FOR THE PURPOSE OF PERPETUATING THE MONUMENTATION CURRENTLY EXISTING. NO ATTEMPT WAS MADE TO DETERMINE THE VALIDITY OF THE MONUMENTS OR THEIR PROPER LOCATION IN RELATION TO LEGAL BOUNDARY LINES IN THE AREA