

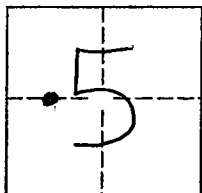
CORNER RECORD

Document Number 06-13

City of

County of SAN JOAQUIN, California

Brief Legal Description NW CORNER OF THE NE 1/4 OF THE SW 1/4 OF SECTION 5 OF T3N, R7E OF THE MDB 3M



CORNER TYPE

Government Corner ☐ Control ☐
Meander ☐ Property ☐
Rancho ☐ Other ☒

Date of Survey Oct. 25, 2005

COORDINATES(Optional)

N.
E.
Zone NAD27 ☐ NAD83 ☐
NAD83 Epoch
Elevation
Vert. Datum: NGVD29 ☐ NAV88 ☐
Meas. Units: Metric ☐ Imperial ☒

Corner - Left as found ☒ Found and tagged ☐ Established ☐ Reestablished ☐ Rebuilt ☐

Identification and type of corner found: Evidence used to identify or procedure used to establish or reestablish the corner:

FOUND 1 1/4" O.D. IRON PIPE WITH NO TAG DOWN 2.0' BELOW THE A.C. SURFACE.

A description of the physical condition of the monument as found and as set or reset:

MONUMENT WAS FOUND IN GOOD CONDITION.

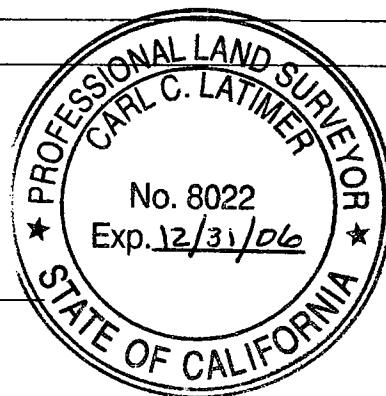
SURVEYOR'S STATEMENT

This Corner Record was prepared by me or under my direction in conformance with

the Land Surveyor's Act on MAY 25, 2006.

Signed [Signature] P.L.S. or R.C.E. Number 8022

For the State of California
Department of Transportation



COUNTY SURVEYOR'S STATEMENT

This Corner Record was received MAY 30, 2006 and examined

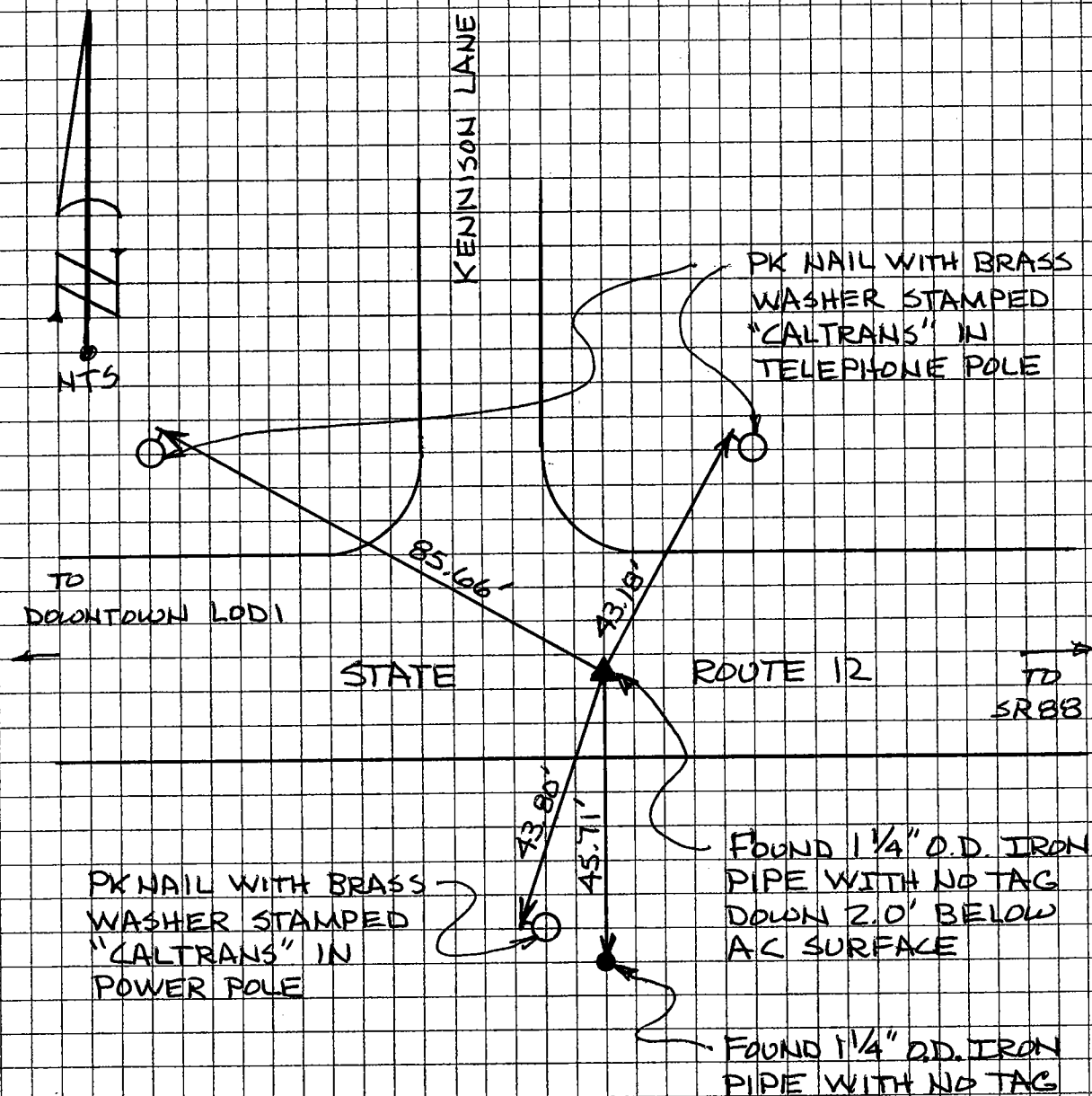
and filed JUNE 9, 2006.

Signed [Signature] P.L.S. or R.C.E. Number 4440

Title ASSISTANT County Surveyor

County Surveyor's Comment





THE TIES SHOWN HEREON ARE FOR THE PURPOSE OF PERPETUATING THE MONUMENTATION CURRENTLY EXISTING. NO ATTEMPT WAS MADE TO DETERMINE THE VALIDITY OF THE MONUMENT OR ITS PROPER LOCATION IN RELATION TO LEGAL BOUNDARY LINES IN THE AREA.