

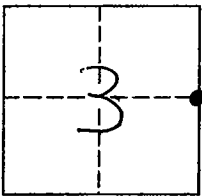
# CORNER RECORD

Document Number 06-10

City of -

County of SAN JOAQUIN, California

Brief Legal Description EAST 1/4 CORNER OF SECTION 3 OF T3N, RTE OF MDR & M



## CORNER TYPE

Government Corner ☒ Control ☐  
 Meander ☐ Property ☐  
 Rancho ☐ Other ☐

Date of Survey Oct. 25, 2005

## COORDINATES(Optional)

N.                       
 E.                       
 Zone                      NAD27 ☐ NAD83 ☐  
 NAD83 Epoch                       
 Elevation                       
 Vert. Datum: NGVD29 ☐ NAV88 ☐  
 Meas. Units: Metric ☐ Imperial ☒

Corner - Left as found ☒ Found and tagged ☐ Established ☐ Reestablished ☐ Rebuilt ☐

Identification and type of corner found: Evidence used to identify or procedure used to establish or reestablish the corner:

FOUND 3/4" DIA. IRON ROD WITH NO TAG DOWN 0.1' BELOW  
AC SURFACE.

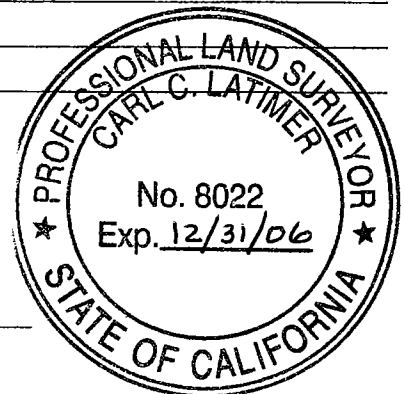
A description of the physical condition of the monument as found and as set or reset:                     

MONUMENT WAS FOUND IN GOOD CONDITION

## SURVEYOR'S STATEMENT

This Corner Record was prepared by me or under my direction in conformance with the Land Surveyor's Act on MAY 25, 2006.

Signed [Signature] P.L.S. or R.C.E. Number 8022  
 For the State of California  
 Department of Transportation



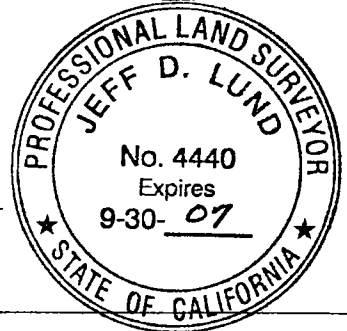
## COUNTY SURVEYOR'S STATEMENT

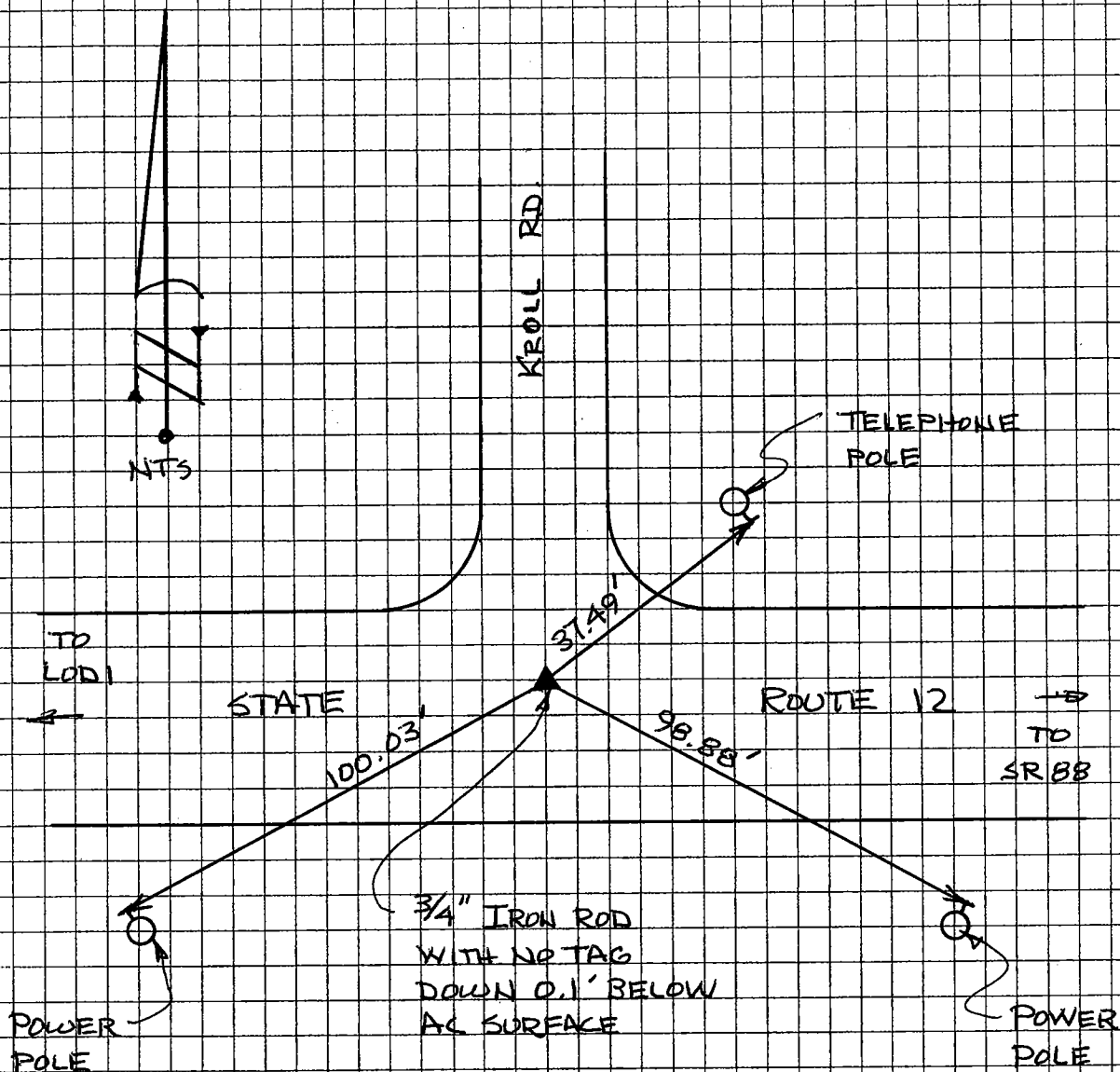
This Corner Record was received MAY 30, 2006 and examined and filed JUNE 9, 2006.

Signed [Signature] P.L.S. or R.C.E. Number 4440

Title ASSISTANT COUNTY SURVEYOR

County Surveyor's Comment                     





NOTE : ALL REFERENCE POINTS  
ARE PK NAILS W/ BRASS  
WASHERS STAMPED "CALTRANS"

THE TIES SHOWN HEREIN ARE FOR THE PURPOSE OF  
PERPETUATING THE MONUMENTATION CURRENTLY EXISTING.  
NO ATTEMPT WAS MADE TO DETERMINE THE VALIDITY  
OF THE MONUMENT OR ITS PROPER LOCATION IN  
RELATION TO LEGAL BOUNDARY LINES IN THE AREA.