

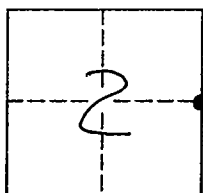
CORNER RECORD

Document Number 06-08

City of _____

County of SAN JOAQUIN, California

Brief Legal Description EAST 1/4 CORNER OF SECTION 2 OF T3N, RTE OF MDB & M



CORNER TYPE

Government Corner ☒ Control ☐
 Meander ☐ Property ☐
 Rancho ☐ Other ☐

Date of Survey OCT. 25, 2005

COORDINATES(Optional)

N. _____
 E. _____
 Zone _____ NAD27 ☐ NAD83 ☐
 NAD83 Epoch _____
 Elevation _____
 Vert. Datum: NGVD29 ☐ NAV88 ☐
 Meas. Units: Metric ☐ Imperial ☒

Corner - Left as found ☒ Found and tagged ☐ Established ☐ Reestablished ☐ Rebuilt ☐

Identification and type of corner found: Evidence used to identify or procedure used to establish or reestablish the corner:

FOUND RAILROAD SPIKE IN A.C. DOWN 0.15' BELOW THE TOP OF THE
A.C. SURFACE.

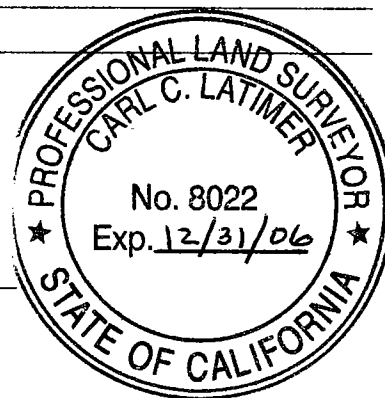
A description of the physical condition of the monument as found and as set or reset:

GOOD CONDITION.

SURVEYOR'S STATEMENT

This Corner Record was prepared by me or under my direction in conformance with the Land Surveyor's Act on MAY 25, 2006.

Signed [Signature] P.L.S. or R.C.E. Number 8022
 For the State of California
 Department of Transportation



COUNTY SURVEYOR'S STATEMENT

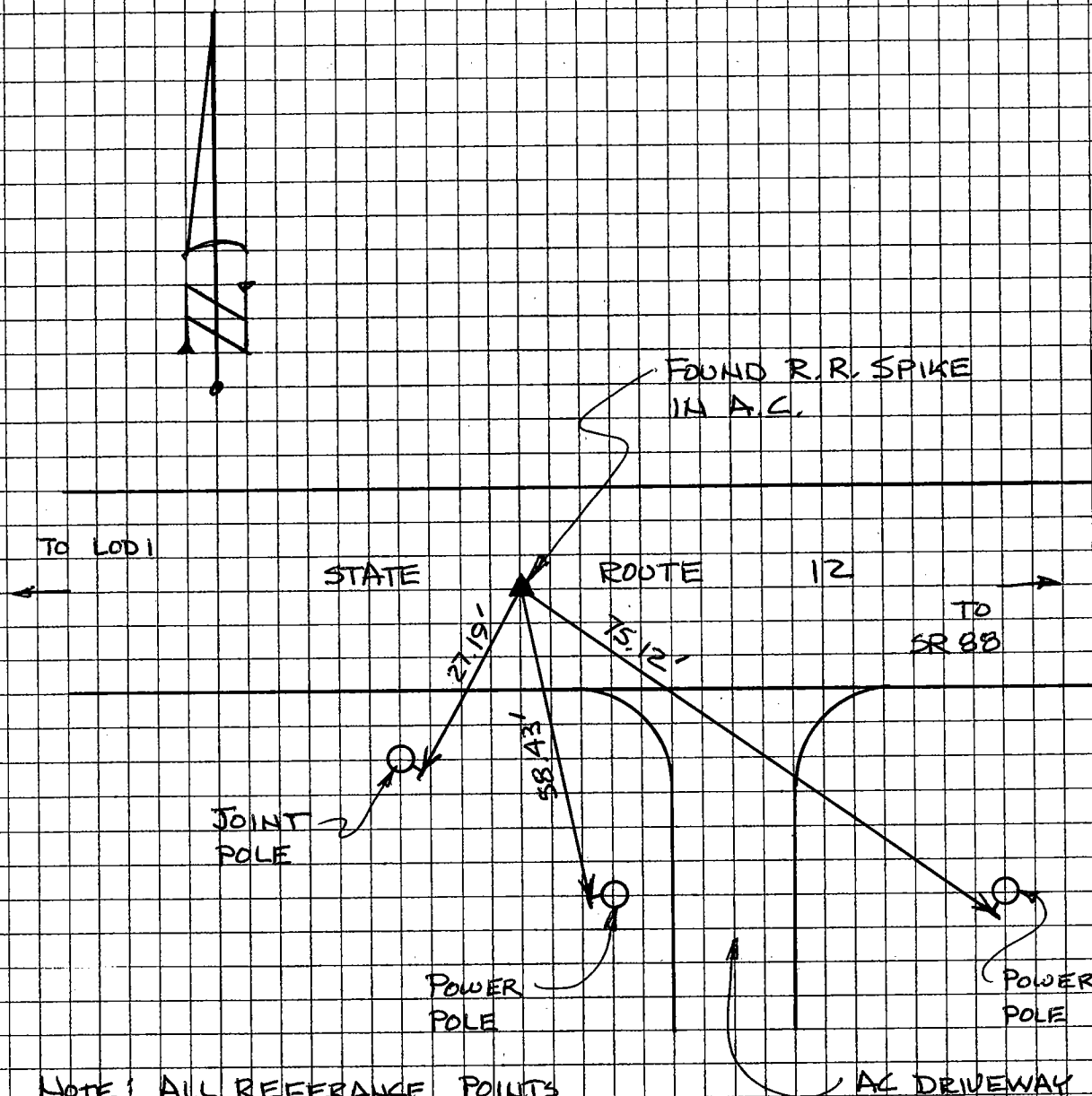
This Corner Record was received MAY 30, 2006 and examined and filed JUNE 9, 2006.

Signed [Signature] P.L.S. or R.C.E. Number 4440

Title ASSISTANT COUNTY SURVEYOR

County Surveyor's Comment _____





NOTE: ALL REFERENCE POINTS
ARE PK NAILS W/ BRASS
WASHER STAMPED "CALTRANS"

AC DRIVEWAY
@ 12024 E. STATE
ROUTE 12

THE TIES SHOWN HEREON ARE FOR THE PURPOSE OF PERPETUATING
THE MONUMENTATION CURRENTLY EXISTING. NO ATTEMPT WAS
MADE TO DETERMINE THE VALIDITY OF THE MONUMENT OR
THEIR PROPER LOCATION IN RELATION TO LEGAL BOUNDARY
LINES IN THE AREA.