

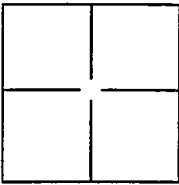
CORNER RECORD

Document Number CR 05-30

City of STOCKTON

County of SAN JOAQUIN, California

Brief Legal Description BEING A PORTION OF SECTION 57 C.M. WEBER GRANT



CORNER TYPE

Government Corner Control
 Meander Property
 Rancho Other

Date of Survey AUGUST 17, 2005

COORDINATES(Optional)

N. _____
 E. _____
 Zone _____ NAD27 NAD83
 NAD83 Epoch _____
 Elev. _____
 Vert. Datum: NGVD29 NADV88
 Meas. Units: Metric Imperial

Corner - Left as found Found and tagged Established Reestablished Rebuilt

Identification and type of corner found: Evidence used to identify or procedure used to establish or reestablish the corner:

CENTER LINE MONUMENTS IN STAGE COACH DRIVE
AS PER CR 05-23

A description of the physical condition of the monument as found and as set or reset: CENTER LINE

MONUMENTS ARE 5/8 INCH DIAMETER STEEL REBAR
WITH A PLASTIC CAP STAMPED "CITY OF STOCKTON"
ENCLOSED IN CAST IRON MONUMENT BOXES

SURVEYOR'S STATEMENT

This Corner Record was prepared by me or under my direction in conformance with the Land Surveyor's Act on 1 SEPT. 2005.

Signed [Signature] P.L.S. or P.C.E. No.: LS 7398



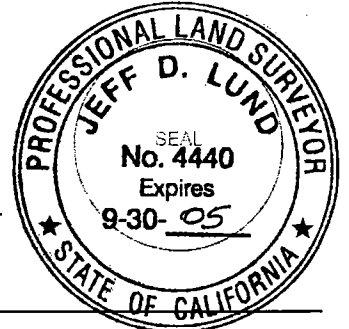
COUNTY SURVEYOR'S STATEMENT

This Corner Record was received SEPTEMBER 2, 2005 and examined and filed SEPTEMBER 13, 2005.

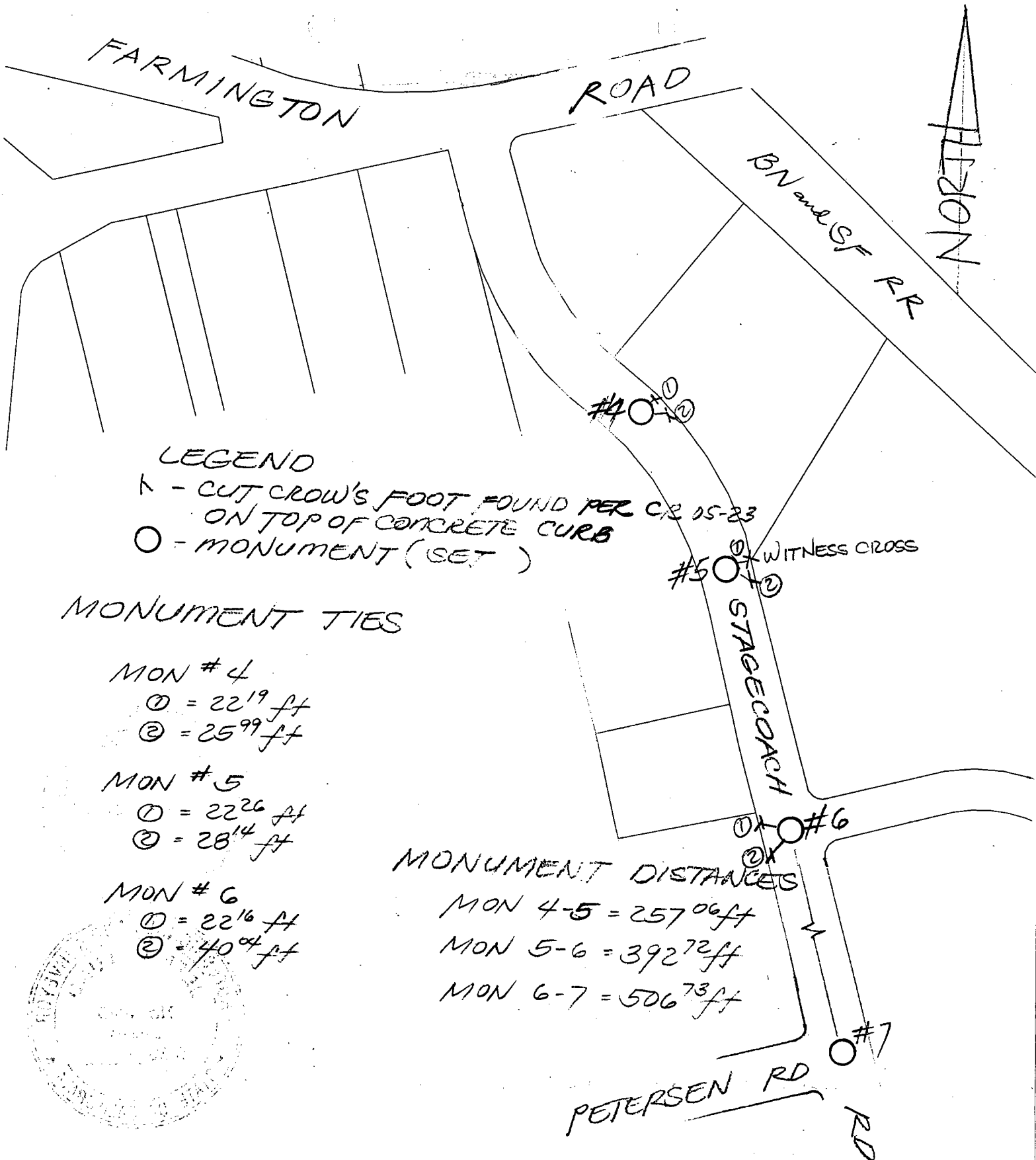
Signed [Signature] P.L.S. or P.C.E. No.: LS 4440

Title ASSISTANT COUNTY SURVEYOR

County Surveyor's Comment _____



(D.D. SHEET NO. 35)



LEGEND

- ▲ - CUT CROW'S FOOT FOUND PER CR 15-23 ON TOP OF CONCRETE CURB
- - MONUMENT (SET)

MONUMENT TIES

- MON # 4
 - ① = 22¹⁹ ft
 - ② = 25⁹⁹ ft
- MON # 5
 - ① = 22²⁶ ft
 - ② = 28¹⁴ ft
- MON # 6
 - ① = 22¹⁶ ft
 - ② = 40⁰⁴ ft

MONUMENT DISTANCES

- MON 4-5 = 257⁰⁶ ft
- MON 5-6 = 392⁷² ft
- MON 6-7 = 506⁷³ ft

