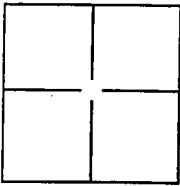


CORNER RECORD

Document Number CR 05-28
 City of STOCKTON County of SAN JOAQUIN, California
 Brief Legal Description BEING A PORTION OF SECTION 58 C.M. WEBER GRANT



CORNER TYPE

Government Corner Control
 Meander Property
 Rancho Other

Date of Survey AUGUST 17, 2005

COORDINATES(Optional)

N. _____
 E. _____
 Zone _____ NAD27 NAD83
 NAD83 Epoch _____
 Elev. _____
 Vert. Datum: NGVD29 NADV88
 Meas. Units: Metric Imperial

Corner - Left as found Found and tagged Established Reestablished Rebuilt

Identification and type of corner found: Evidence used to identify or procedure used to establish or reestablish the corner:

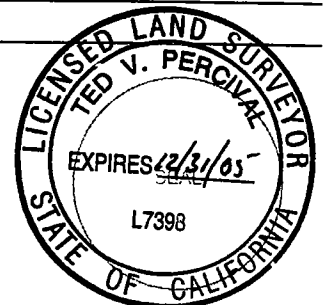
CENTER LINE MONUMENTS IN STAGE COACH DRAWS
AS PER CR 05-21

A description of the physical condition of the monument as found and as set or reset: CENTER LINE
MONUMENTS ARE 5/8 INCH DIAMETER STEEL REBAR
WITH A PLASTIC CAP STAMPED "CITY OF STOCKTON"
ENCLOSED IN CAST IRON MONUMENT BOXES

SURVEYOR'S STATEMENT

This Corner Record was prepared by me or under my direction in conformance with the Land Surveyor's Act on 1 SEPT., 2005.

Signed [Signature] P.L.S. or B.C.E. No.: LS 7398



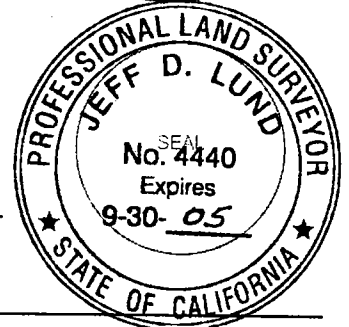
COUNTY SURVEYOR'S STATEMENT

This Corner Record was received SEPTEMBER 2, 2005 and examined and filed SEPTEMBER 13, 2005.

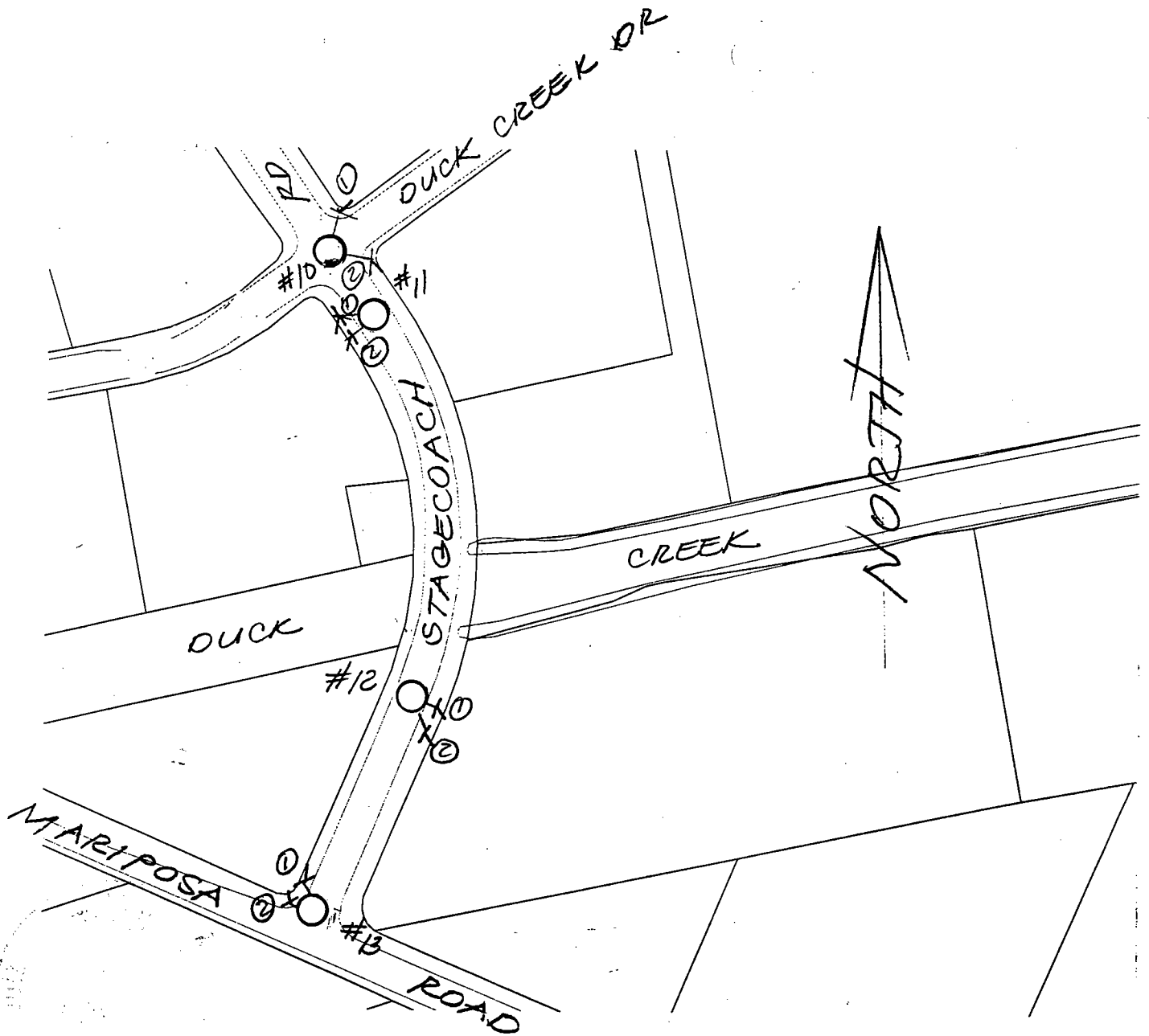
Signed [Signature] P.L.S. or B.C.E. No.: LS 4440

Title ASSISTANT COUNTY SURVEYOR

County Surveyor's Comment _____



(D.D. SHEET NO. 35)



LEGEND

- ⊥ - CUT CROW'S FOOT ON TOP OF CONCRETE CURB FOUND PER CR 05-21
- - MONUMENT (SET)

DISTANCES

- MON 10-11 = 100⁰⁰ ft
- MON 11-12 = 492³¹ ft
- MON 12-13 = 309⁰² ft

MONUMENT TIES

- MON # 10
 - 1 = 43⁹⁴ ft
 - 2 = 45⁷⁴ ft
- MON # 11
 - 1 = 25¹³ ft
 - 2 = 22¹⁸ ft
- MON # 12
 - 1 = 27¹⁹ ft
 - 2 = 22¹⁴ ft
- MON # 13
 - 1 = 26⁴² ft
 - 2 = 28⁴⁴ ft