

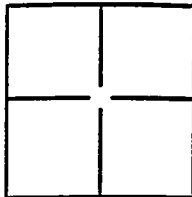
CORNER RECORD

Document Number 05-21

City of STOCKTON

County of SAN JOAQUIN, California

Brief Legal Description BEING A PORTION OF SECTION 58 C.M. WEBER GRANT



CORNER TYPE

COORDINATES(Optional)

Government Corner Control
 Meander Property
 Rancho Other

N. _____
 E. _____
 Zone _____ NAD27 NAD83
 NAD83 Epoch _____
 Elev. _____
 Vert. Datum: NGVD29 NADV88
 Meas. Units: Metric Imperial

Date of Survey JULY 15, 2005

Corner - Left as found Found and tagged Established Reestablished Rebuilt

Identification and type of corner found: Evidence used to identify or procedure used to establish or reestablish the corner:

CENTER LINE MONUMENTS IN STAGECOACH DRIVE
AS PER MAP, M&P VOLUME 21, PAGE 2 (STOCKTON TRIANGLE
INDUSTRIAL PARK UNIT No. 1)

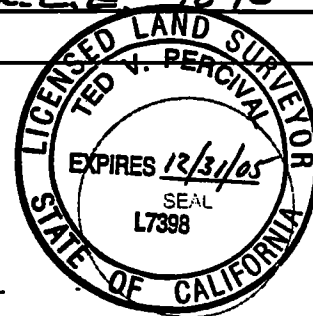
A description of the physical condition of the monument as found and as set or reset: CENTER LINE

MONUMENTS ARE 3/4 INCH IRON PIN ENCLOSED IN
CAST IRON MONUMENT BOXES, TAGGED R.C.E. 9890

SURVEYOR'S STATEMENT

This Corner Record was prepared by me or under my direction in conformance with
 the Land Surveyor's Act on 15 JULY, 2005.

Signed Jeff D. Percival ~~Assistant County Surveyor~~ LS 7398



COUNTY SURVEYOR'S STATEMENT

This Corner Record was received JULY 29, 2005 and examined

and filed AUGUST 1, 2005

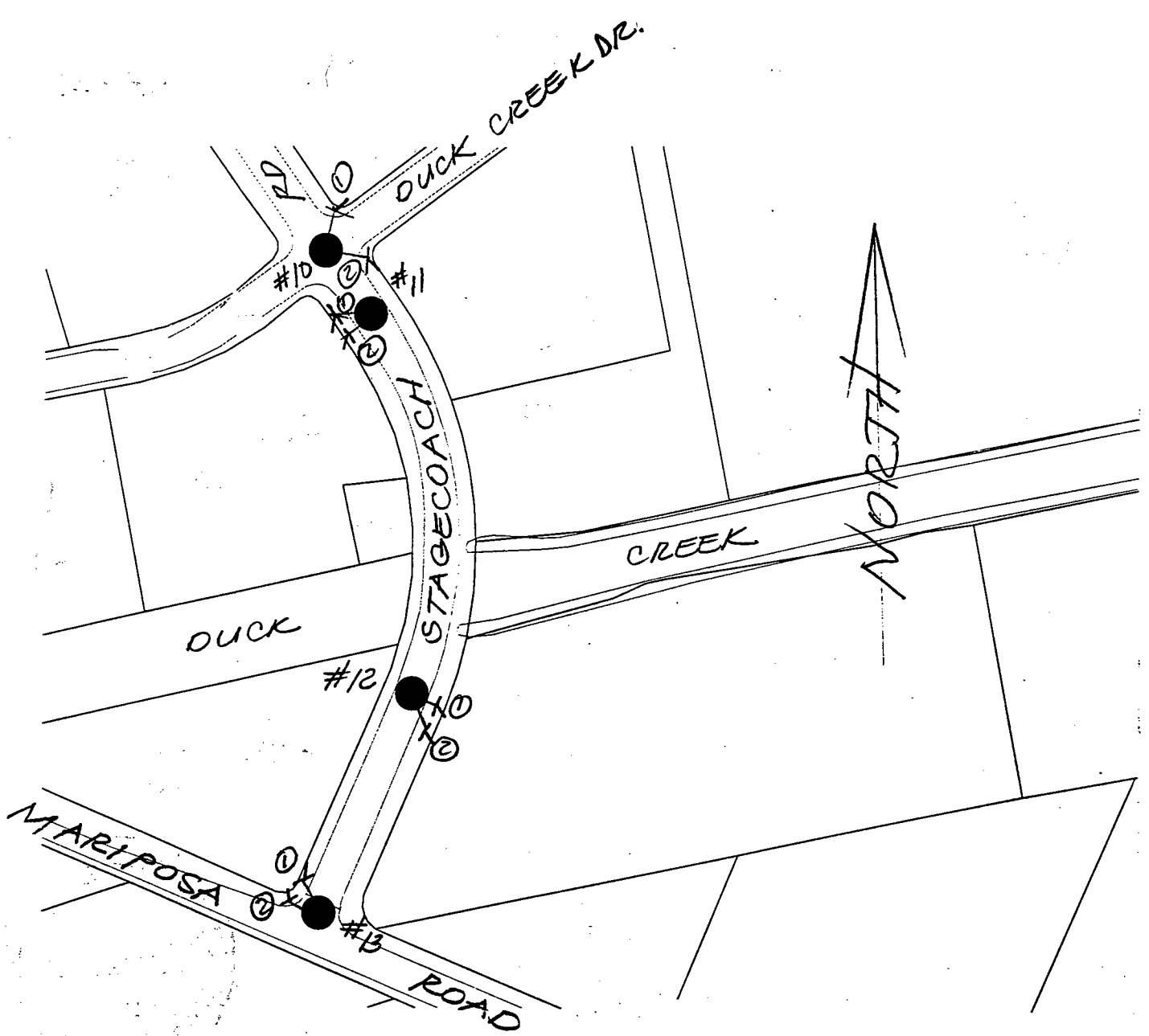
Signed Jeff D. Lund ~~Assistant County Surveyor~~ LS 4440

Title Assistant County Surveyor

County Surveyor's Comment _____



(D.D. SHEET NO. 35)



LEGEND

- - CUT CROW'S FOOT ON TOP OF CONCRETE CURB
- - MONUMENT (FOUND)

DISTANCES

- MON #10 - 11 = 100⁰⁰ ft
- MON #11 - 12 = 492³¹ ft
- MON #12 - 13 = 309⁰² ft

MONUMENT TIES

- MON #10
 - ① = 43⁹⁴ ft
 - ② = 45⁷⁴ ft
- MON #11
 - ① = 25¹³ ft
 - ② = 22¹⁸ ft
- MON #12
 - ① = 27¹⁹ ft
 - ② = 22¹⁴ ft
- MON #13
 - ① = 26⁴² ft
 - ② = 28⁴⁴ ft

