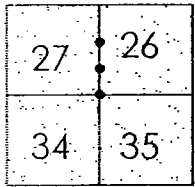


CORNER RECORD

Document Number 05-17  
County of San Joaquin, California

City of \_\_\_\_\_

Brief Legal Description AUSTIN ROAD  
SE CORNER OF SECTION 27, T1N R7E.



T1N R7E

CORNER TYPE

- Government Corner  Control
- Meander  Property
- Rancho  Other

Date of Survey Dec. 20, 2001

COORDINATES (Optional)

N. \_\_\_\_\_  
 E. \_\_\_\_\_  
 Zone \_\_\_\_\_ NAD27  NAD83   
 NAD83 Epoch \_\_\_\_\_  
 Elev. \_\_\_\_\_  
 Vert. Datum: NGVD29  NAVD88   
 Meas. Units: Metric  Imperial

Corner - Left as found  Found and tagged  Established  Reestablished  Rebuilt

Identification and type of corner found: Evidence used to identify or procedure used to establish or reestablish the corner:  
SEE SKETCH ON BACKSIDE.

A description of the physical condition of the monument as found and as set or reset:  
FOUND MONUMENT IN GOOD CONDITION. SEE SKETCH ON BACKSIDE.

SURVEYOR'S STATEMENT

This Corner Record was prepared by me or under my direction in conformance with the Land Surveyors' Act on MARCH 10, 2005.

Signed Manuel Solerio R.C.E. Number C30890



COUNTY SURVEYOR'S STATEMENT

This Corner Record was received MARCH 14, 2005 and examined and filed MARCH 14, 2005.

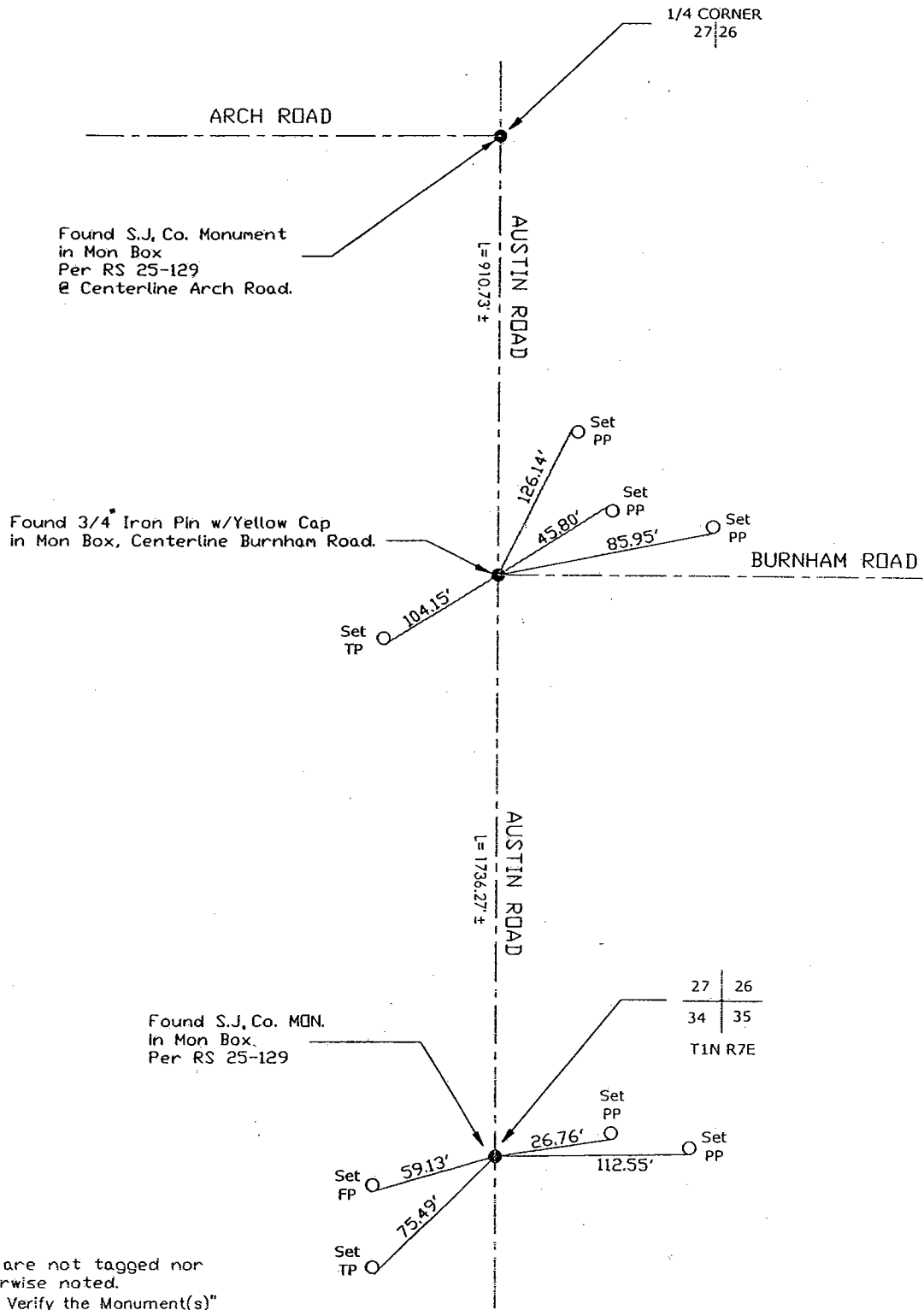
Signed Jeff Lund P.L.S. No. 4440  
Title Assistant County Surveyor



County Surveyor's Comment \_\_\_\_\_  
THIS CORNER RECORD IS NOT IN COMPLIANCE WITH BOARD RULE 464(c)  
REGARDING SUBMITTAL WITHIN 90 DAYS FROM THE DATE OF SURVEY.



N.T.S.



Note: Found Monuments are not tagged nor of Record, unless otherwise noted.  
"No Attempt Was Made to Verify the Monument(s)"

NTS= Not to Scale

I.P.=Intersection Point

FP=Fence Post

GP=Guy Post

JP=Joint Pole

PP=Power Pole

SP=Service Pole

TP=Telephone Pole

N.T.S.=Not To Scale

Set=Conc. Nail with Brass Washer Stamped

"S.J. Co.", unless otherwise noted