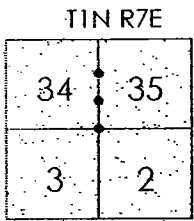


CORNER RECORD

Document Number 05-16
County of San Joaquin, California

City of _____

Brief Legal Description AUSTIN ROAD
SE CORNER OF SECTION 34, T1N R7E.



T1N R7E

CORNER TYPE

COORDINATES (Optional)

Government Corner Control
 Meander Property
 Rancho Other
 Date of Survey Dec. 20, 2001

N. _____
 E. _____
 Zone _____ NAD27 NAD83
 NAD83 Epoch _____
 Elev. _____
 Vert. Datum: NGVD29 NAVD88
 Meas. Units: Metric Imperial

T1S R7E

Corner - Left as found Found and tagged Established Reestablished Rebuilt

Identification and type of corner found; Evidence used to identify or procedure used to establish or reestablish the corner:
SEE SKETCH ON BACKSIDE.

A description of the physical condition of the monument as found and as set or reset:
FOUND MONUMENT IN GOOD CONDITION. SEE SKETCH ON BACKSIDE.

SURVEYOR'S STATEMENT

This Corner Record was prepared by me or under my direction in conformance with
 the Land Surveyors' Act on March 10, 2005
 Signed Manuel Solario R.C.E. Number C30890



COUNTY SURVEYOR'S STATEMENT

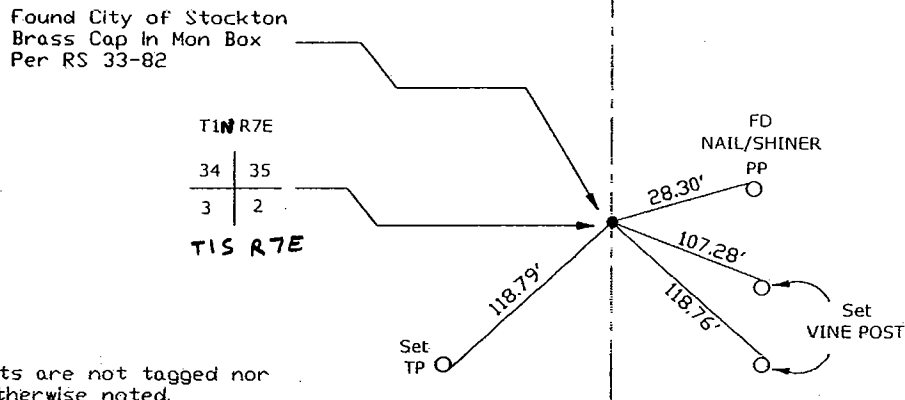
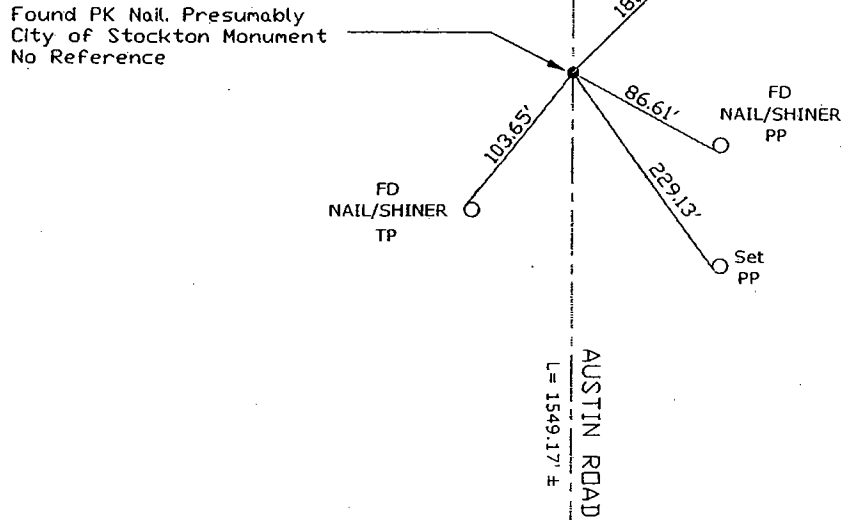
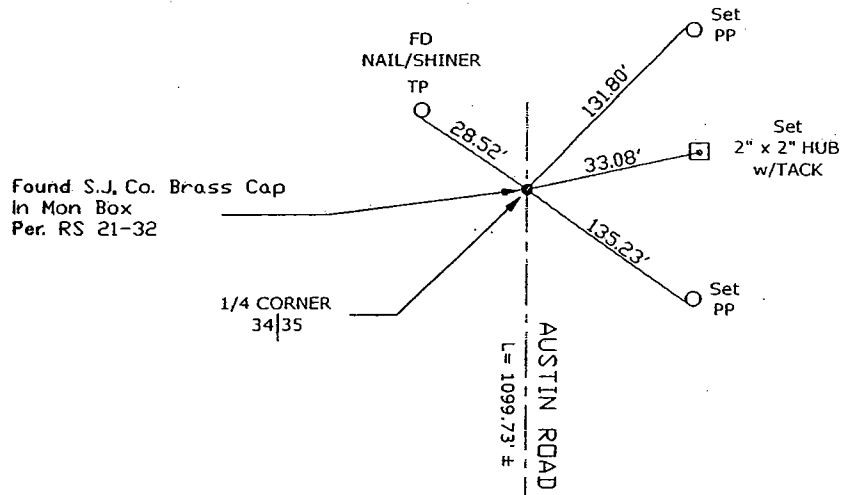
This Corner Record was received MARCH 14, 2005 and examined
 and filed MARCH 14, 2005
 Signed Jeff D. Lund P.L.S. No. 4440
 Title Assistant County Surveyor



County Surveyor's Comment _____
THIS CORNER RECORD IS NOT IN COMPLIANCE WITH BOARD RULE 464(c)
REGARDING SUBMITTAL WITHIN 90 DAYS FROM THE DATE OF SURVEY.



N.T.S.



Note: Found Monuments are not tagged nor of Record, unless otherwise noted.
 "No Attempt Was Made to Verify the Monument(s)"

NTS= Note to Scale

FP=Fence Post

GP=Guy Post

JP=Joint Pole

PP=Power Pole

SP=Service Pole

TP=Telephone Pole

N.T.S.=Not To Scale

Set=Conc. Nail with Brass Washer Stamped
 "S.J. Co.", unless otherwise noted