

CORNER RECORD

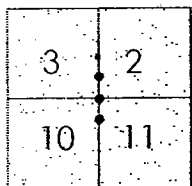
Document Number 05-15
 City of _____ County of San Joaquin California

Brief Legal Description AUSTIN ROAD AT THE INTERSECTION OF LYNCH ROAD

NE CORNER OF SECTION 10, T1S R7E.

CORNER TYPE

COORDINATES (Optional)



T1S R7E

Government Corner ☒ Control ☐
 Meander ☐ Property ☐
 Rancho ☐ Other ☐

Date of Survey Dec. 20, 2001

N. _____
 E. _____
 Zone _____ NAD27 ☐ NAD83 ☐
 NAD83 Epoch _____
 Elev. _____
 Vert. Datum: NGVD29 ☐ NAVD88 ☐
 Meas. Units: Metric ☐ Imperial ☒

Corner - Left as found ☒ Found and tagged ☐ Established ☐ Reestablished ☐ Rebuilt ☐

Identification and type of corner found: Evidence used to identify or procedure used to establish or reestablish the corner:
SEE SKETCH ON BACKSIDE.

A description of the physical condition of the monument as found and as set or reset: _____
FOUND MONUMENT IN GOOD CONDITION. SEE SKETCH ON BACKSIDE.

SURVEYOR'S STATEMENT

This Corner Record was prepared by me or under my direction in conformance with
 the Land Surveyors' Act on March 10, 2005

Signed Manuel Solario R.C.E. Number C30890

COUNTY SURVEYOR'S STATEMENT

This Corner Record was received MARCH 14, 2005 and examined
 and filed MARCH 14, 2005

Signed Jeff D. Lund P.L.S. No. 4440

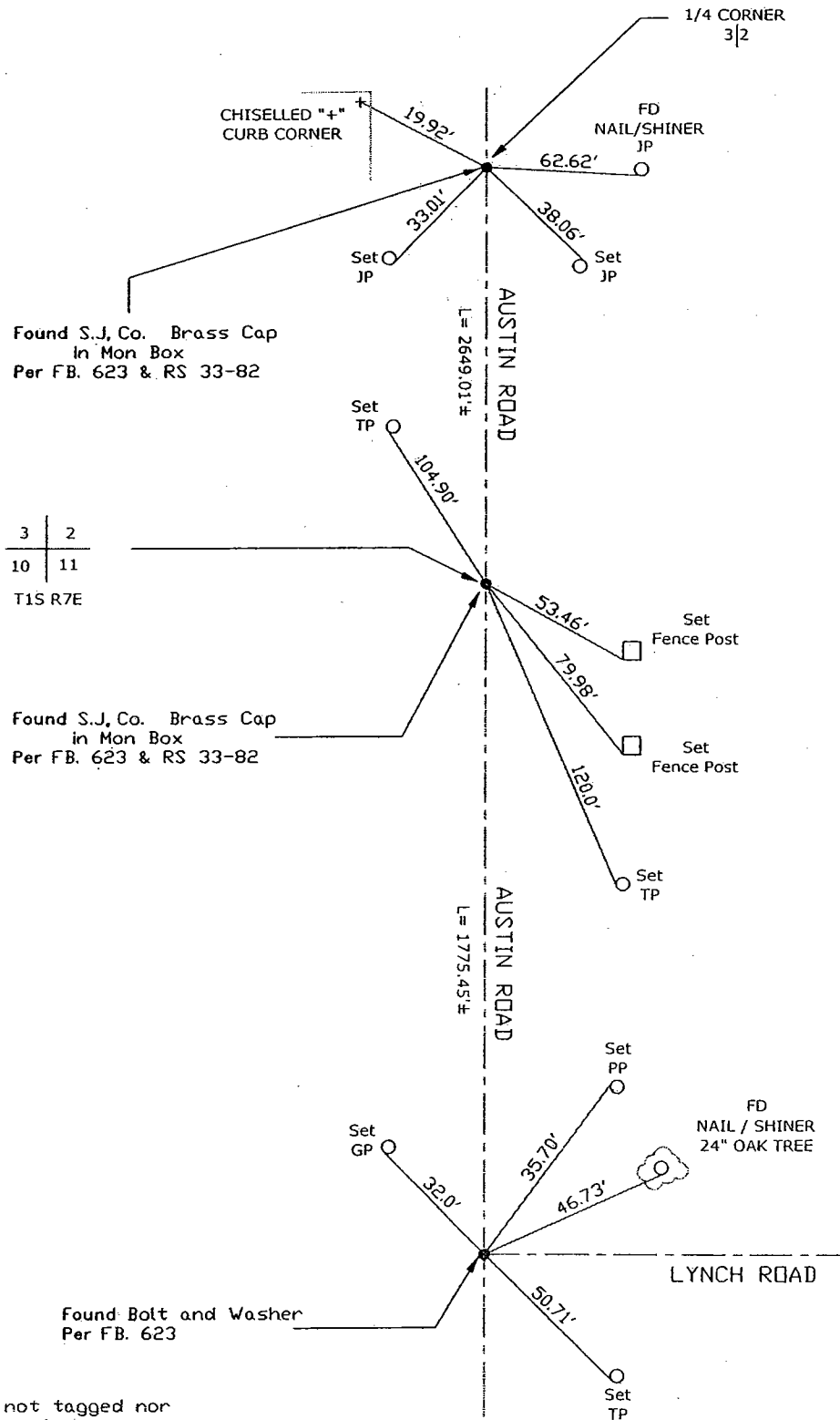
Title Assistant County Surveyor

County Surveyor's Comment _____
 THIS CORNER RECORD IS NOT IN COMPLIANCE WITH BOARD RULE 464(c)
 REGARDING SUBMITTAL WITHIN 90 DAYS FROM THE DATE OF SURVEY.





N.T.S.



Note: Found Monuments are not tagged nor of Record, unless otherwise noted.
 "No Attempt Was Made to Verify the Monument(s)"

NTS= Note to Scale

FP=Fence Post

GP=Guy Post

JP=Joint Pole

PP=Power Pole

SP=Service Pole

TP=Telephone Pole

N.T.S.=Not To Scale

Set=Conc. Nail with Brass Washer Stamped

"S.J. Co.", unless otherwise noted