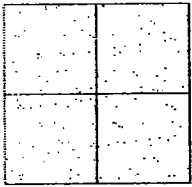


CORNER RECORD

Document Number 05-13
County of San Joaquin, California

City of _____

Brief Legal Description AUSTIN ROAD 4346.38'± N/O FRENCH CAMP ROAD
B.C. to E.C. 722.43' ±.



CORNER TYPE

Government Corner Control
Meander Property
Rancho Other
Date of Survey Dec. 20, 2001

COORDINATES (Optional)

N. _____
E. _____
Zone _____ NAD27 NAD83
NAD83 Epoch _____
Elev. _____
Vert. Datum: NGVD29 NAVD88
Meas. Units: Metric Imperial

Corner - Left as found Found and tagged Established Reestablished Rebuilt

Identification and type of corner found: Evidence used to identify or procedure used to establish or reestablish the corner:
SEE SKETCH ON BACKSIDE.

A description of the physical condition of the monument as found and as set or reset:
FOUND MONUMENT IN GOOD CONDITION. SEE SKETCH ON BACKSIDE.

SURVEYOR'S STATEMENT

This Corner Record was prepared by me or under my direction in conformance with
the Land Surveyors' Act on March 10, 2005
Signed Manuel Solorio R.C.E. Number C30890



COUNTY SURVEYOR'S STATEMENT

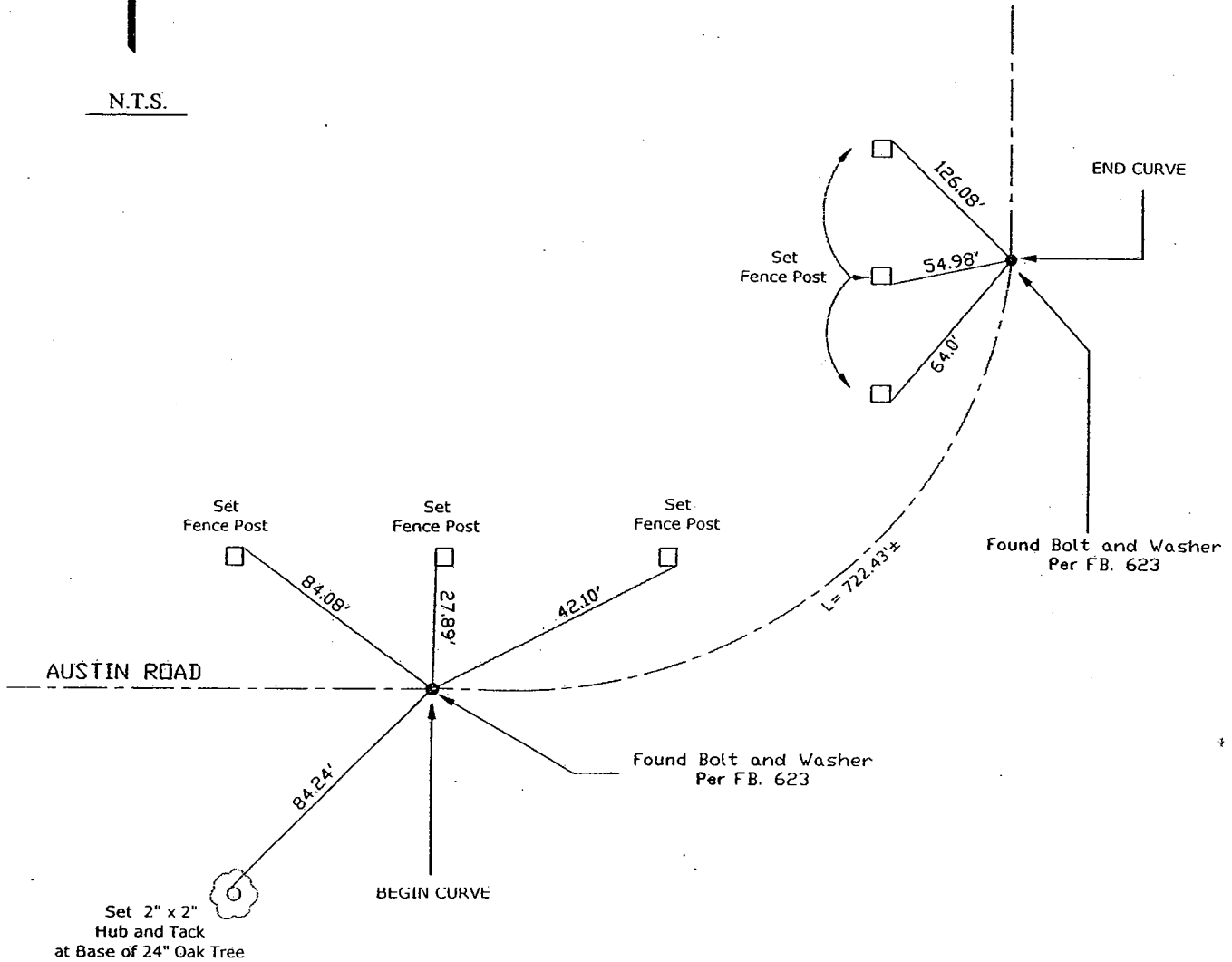
This Corner Record was received MARCH 14, 2005 and examined
and filed MARCH 14, 2005
Signed J. Lund P.L.S. No. 4440
Title Assistant County Surveyor



County Surveyor's Comment
THIS CORNER RECORD IS NOT IN COMPLIANCE WITH BOARD RULE 464(c)
REGARDING SUBMITTAL WITHIN 90 DAYS FROM THE DATE OF SURVEY.



N.T.S.



Note: Found Monuments are not tagged nor of Record, unless otherwise noted.
"No Attempt Was Made to Verify the Monument(s)"

NTS= Not to Scale
FP=Fence Post
GP=Guy Post
JP=Joint Pole
PP=Power Pole
SP=Service Pole
TP=Telephone Pole
N.T.S.=Not To Scale
Set=Conc. Nail with Brass Washer Stamped
"S.J. Co.", unless otherwise noted