

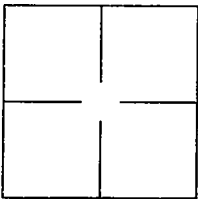
CORNER RECORD

Document Number 05-11

City of RIPON

County of SAN JOAQUIN, California

Brief Legal Description LOTS 21 & 22, BROOKLINE SUBDIVISION, BOOK 38 MAPS & PLATS PAGE 7



CORNER TYPE

Government Corner Control
 Meander Property
 Rancho Other

Date of Survey NOV. 13, 2004

COORDINATES (Optional)

N _____
 E _____
 Zone _____ NAD27 NAD83
 NAD83 Epoch _____
 Elevation _____
 Vert. Datum: NGVD29 NADV88
 Meas Units: Metric Imperial

Corner - Left as found Found and tagged Established Reestablished Rebuilt

Identification and type of corner found: Evidence used to identify or procedure used to establish or reestablish the corner:

SEE SKETCH

A description of the physical condition of the monument as found and as set or reset: _____

SEE SKETCH

SURVEYOR'S STATEMENT

This Corner Record was prepared by me or under my direction in conformance with
 the Land Surveyors' Act on NOVEMBER 16, 2004.

Signed Wayne G. Sutton P.L.S. Number 3863
 Exp - 6/30/06



COUNTY SURVEYOR'S STATEMENT

This Corner Record was received JANUARY 27, 2005 and examined

and filed FEBRUARY 1, 2005.

Signed Jeff D. Lund P.L.S. Number 4440

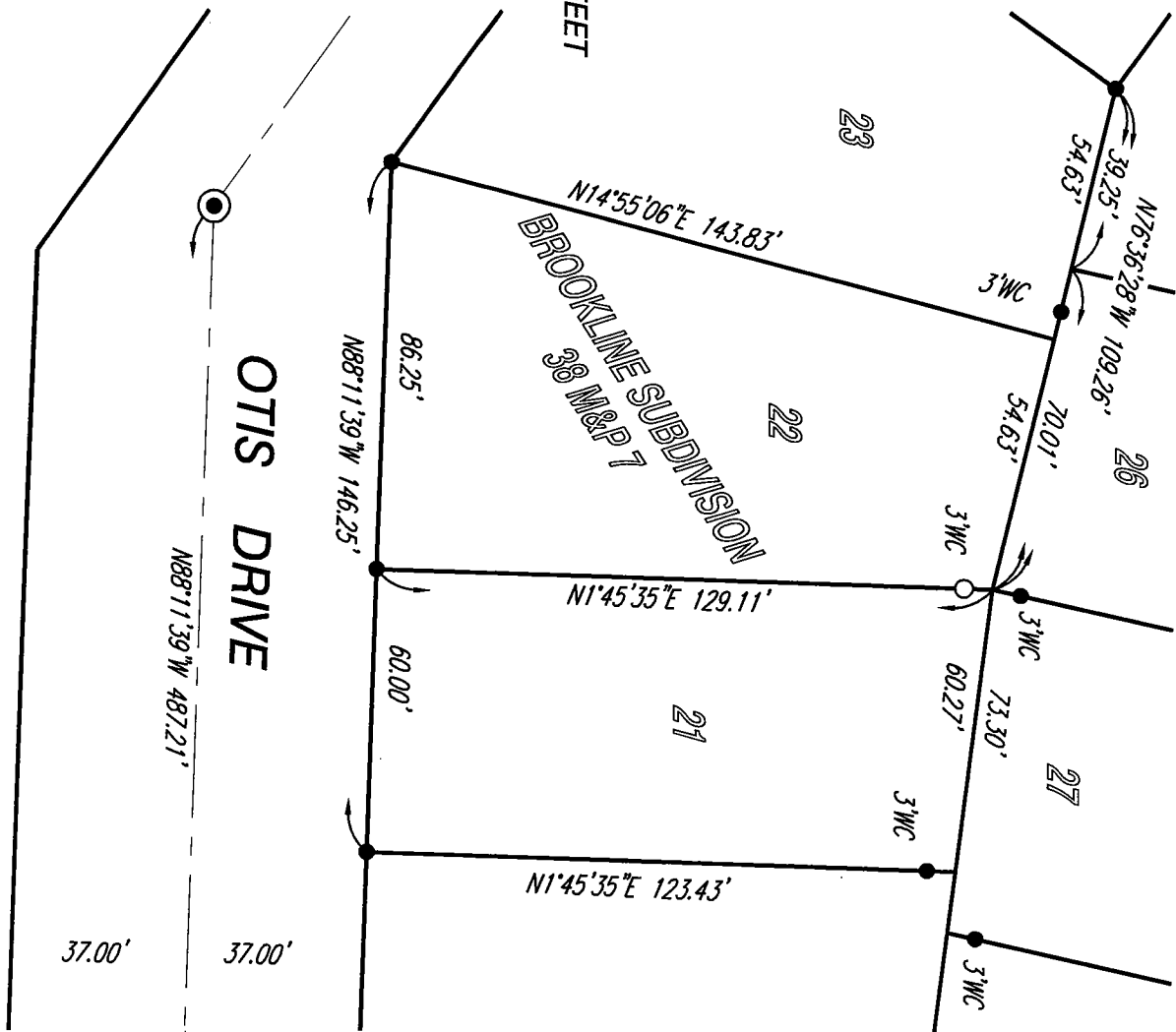
Title ASSISTANT COUNTY SURVEYOR

County Surveyor's Comment _____



1" = 40 FEET

NORTH



OTIS DRIVE

BROOKS LANE

LEGEND:

- SET 3/4"x30" IRON PIPE WITH CAP STAMPED L.S. 3863
- FOUND 3/4" IRON PIPE WITH CAP STAMPED L.S. 3863 IN MONUMENT WELL PER 38 M&P 7
- FOUND 3/4" IRON PIPE WITH CAP STAMPED L.S. 3863 PER 38 M&P 7
- 3.00 FOOT WITNESS CORNER MEASURED ALONG PROPERTY LINE FROM LOT CORNER, UNLESS OTHERWISE NOTED.

ALL DISTANCES ARE MEASURED AND RECORD, UNLESS OTHERWISE NOTED