

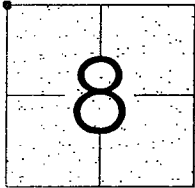
CORNER RECORD

Document Number 05-06
County of San Joaquin, California

City of _____

Brief Legal Description DEVRIES ROAD INTERSECTION OF SARGENT ROAD

NW CORNER OF SECTION 8, T.3N, R.6E



T.3N, R.6E

CORNER TYPE

- Government Corner Control
- Meander Property
- Rancho Other

Date of Survey August 22, 2003

COORDINATES (Optional!)

N. _____
 E. _____
 Zone _____ NAD27 NAD83
 NAD83 Epoch _____
 Elev. _____
 Vert. Datum: NGVD29 NAVD88
 Meas. Units: Metric Imperial

Corner - Left as found Found and tagged Established Reestablished Rebuilt

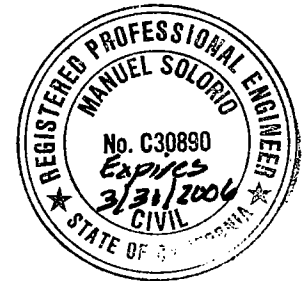
Identification and type of corner found: Evidence used to identify or procedure used to establish or reestablish the corner:
SEE SKETCH ON BACKSIDE.

A description of the physical condition of the monument as found and as set or reset:
FOUND MONUMENT IN GOOD CONDITION. SEE SKETCH ON BACKSIDE.

SURVEYOR'S STATEMENT

This Corner Record was prepared by me or under my direction in conformance with the Land Surveyors' Act on Jan. 21, 2005.

Signed Manuel Solario R.C.E. Number C30890



COUNTY SURVEYOR'S STATEMENT

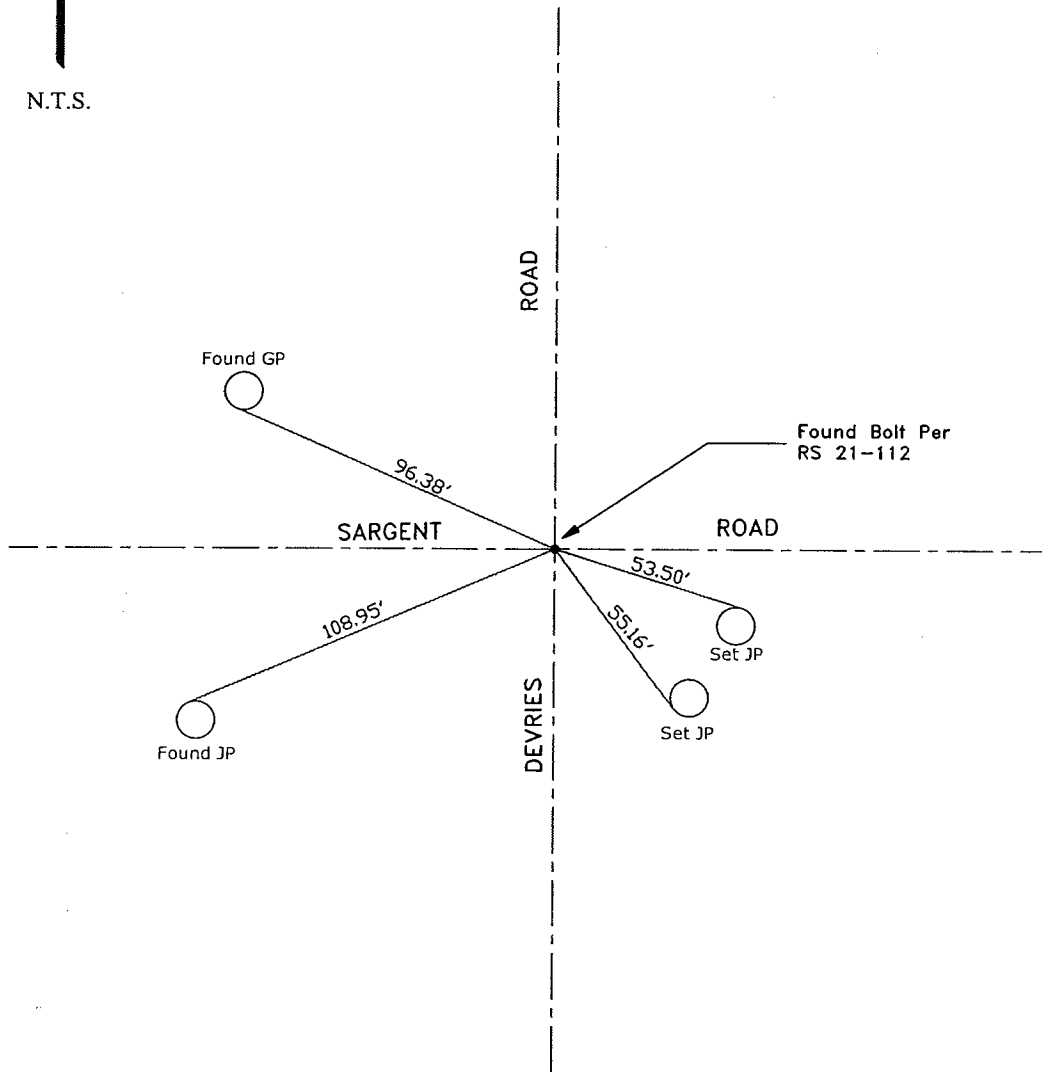
This Corner Record was received JAN. 21, 2005 and examined and filed JANUARY 24, 2005.

Signed Jeff Lund P.L.S. No. 4440

Title Assistant County Surveyor



County Surveyor's Comment _____
THIS CORNER RECORD IS NOT IN COMPLIANCE WITH BOARD RULE 464(c)
REGARDING SUBMITTAL WITHIN 90 DAYS FROM THE DATE OF SURVEY.



"No Attempt Was Made to Verify Monument(s)"

FP=Fence Post

GP=Guy Post

JP=Joint Pole

PP=Power Pole

SP=Service Pole

TP=Telephone Pole

N.T.S.=Not to Scale

Set=Conc. Nail with Brass Washer Stamped

"S.J. Co.", unless otherwise noted

Found=Nail with Shiner, unless otherwise noted

Note: Found Monuments are not Tagged nor of Record unless otherwise noted.