

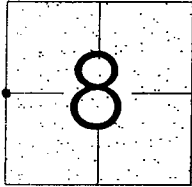
CORNER RECORD

Document Number 05-04  
County of San Joaquin, California

City of \_\_\_\_\_

Brief Legal Description DEVRIES ROAD 2644± S/O OF SARGENT ROAD

SW CORNER OF THE NW 1/4 OF SECTION 8, T.3N, R.6E



T.3N, R.6E

CORNER TYPE

- Government Corner  Control
- Meander  Property
- Rancho  Other

Date of Survey August 22, 2003

COORDINATES (Optional)

N. \_\_\_\_\_  
 E. \_\_\_\_\_  
 Zone \_\_\_\_\_ NAD27  NAD83   
 NAD83 Epoch \_\_\_\_\_  
 Elev. \_\_\_\_\_  
 Vert. Datum: NGVD29  NAVD88   
 Meas. Units: Metric  Imperial

Corner - Left as found  Found and tagged  Established  Reestablished  Rebuilt

Identification and type of corner found: Evidence used to identify or procedure used to establish or reestablish the corner:  
SEE SKETCH ON BACKSIDE.

A description of the physical condition of the monument as found and as set or reset: \_\_\_\_\_  
FOUND MONUMENT IN GOOD CONDITION. SEE SKETCH ON BACKSIDE.

SURVEYOR'S STATEMENT

This Corner Record was prepared by me or under my direction in conformance with the Land Surveyors' Act on Jan. 21, 2005.

Signed Manuel Solano R.C.E. Number C30890



COUNTY SURVEYOR'S STATEMENT

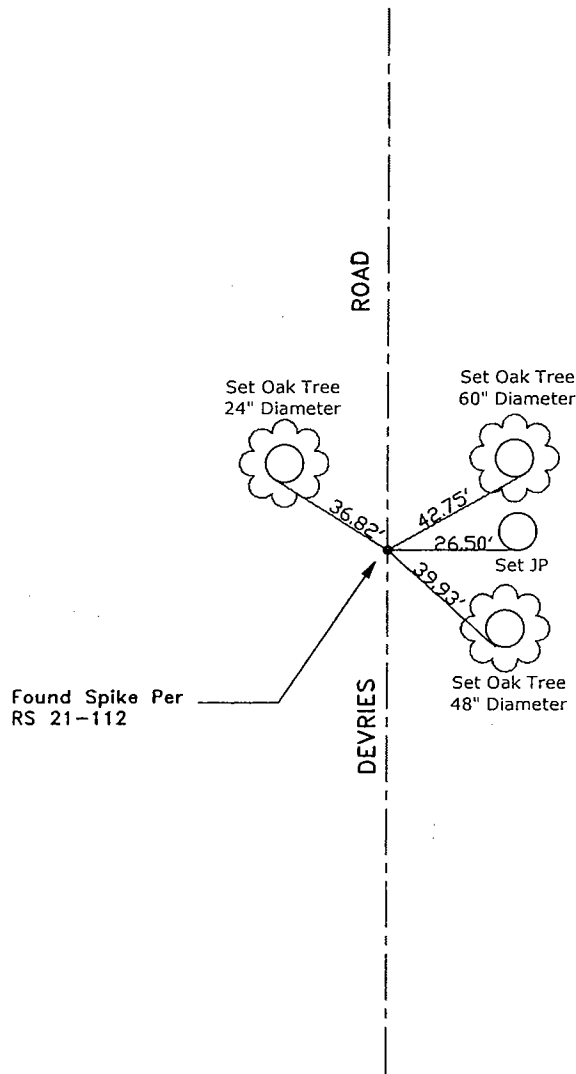
This Corner Record was received JAN. 21, 2005 and examined and filed JANUARY 24, 2005.

Signed Jeff Lund P.L.S. No. 4440

Title Assistant County Surveyor



County Surveyor's Comment \_\_\_\_\_  
THIS CORNER RECORD IS NOT IN COMPLIANCE WITH BOARD RULE 464(c)  
REGARDING SUBMITTAL WITHIN 90 DAYS FROM THE DATE OF SURVEY.



"No Attempt Was Made to Verify Monument(s)"

- FP=Fence Post
  - GP=Guy Post
  - JP=Joint Poie
  - PP=Power Pole
  - SP=Service Pole
  - TP=Telephone Pole
  - N.T.S.=Not to Scale
  - Set=Conc. Nail with Brass Washer Stamped  
"S.J. Co.", unless otherwise noted
  - Found=Nail with Shiner, unless otherwise noted
- Note: Found Monuments are not Tagged nor of Record unless otherwise noted.