

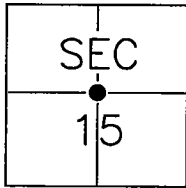
CORNER RECORD

Document Number 05-02

City of N/A

County of SAN JOAQUIN, California

Brief Legal Description INTERIOR QUARTER CORNER OF SECTION 15, T. 2 S., R. 9 E., M.D.B. & M.



CORNER TYPE

Government Corner Control
 Meander Property
 Rancho Other

COORDINATES(Optional)

N. _____
 E. _____
 Zone _____ NAD27 NAD83
 NAD83 Epoch _____
 Elev. _____
 Vert. Datum: NGVD29 NADV88
 Meas. Units: Metric Imperial

Date of Survey OCTOBER 20, 2004.

Corner - Left as found Found and tagged Established Reestablished Rebuilt

Identification and type of corner found: Evidence used to identify or procedure used to establish or reestablish the corner:

FOUND IRON PIN AND WASHER IN MONUMENT WELL PER BOOK 16 OF PARCEL MAPS, PAGE 101, SAN JOAQUIN COUNTY RECORDS.

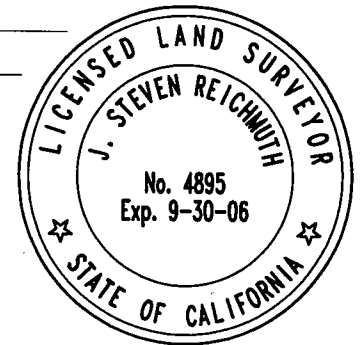
A description of the physical condition of the monument as found and as set or reset

MONUMENT IS IN GOOD CONDITION. SET NAILS IN PAVEMENT FOR TIES TO EXISTING MONUMENT. SEE FOLLOWING PAGE FOR LOCATION OF TIES. MONUMENT WILL BE DESTROYED WITH THE CONSTRUCTION OF AN UNDERGROUND CONVEYOR SYSTEM.

SURVEYOR'S STATEMENT

This Corner Record was prepared by me or under my direction in conformance with the Land Surveyor's Act on DECEMBER 30, 2004.

Signed J. Steven Reichmuth P.L.S. ~~NO. 4895~~ No.: L.S. 4895



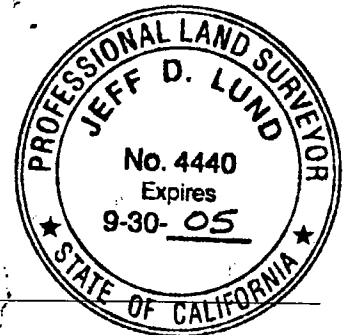
COUNTY SURVEYOR'S STATEMENT

This Corner Record was received JANUARY 3, 2005 and examined and filed JANUARY 14, 2005.

Signed Jeff D. Lund P.L.S. or R.C.E. No.: LS 4440

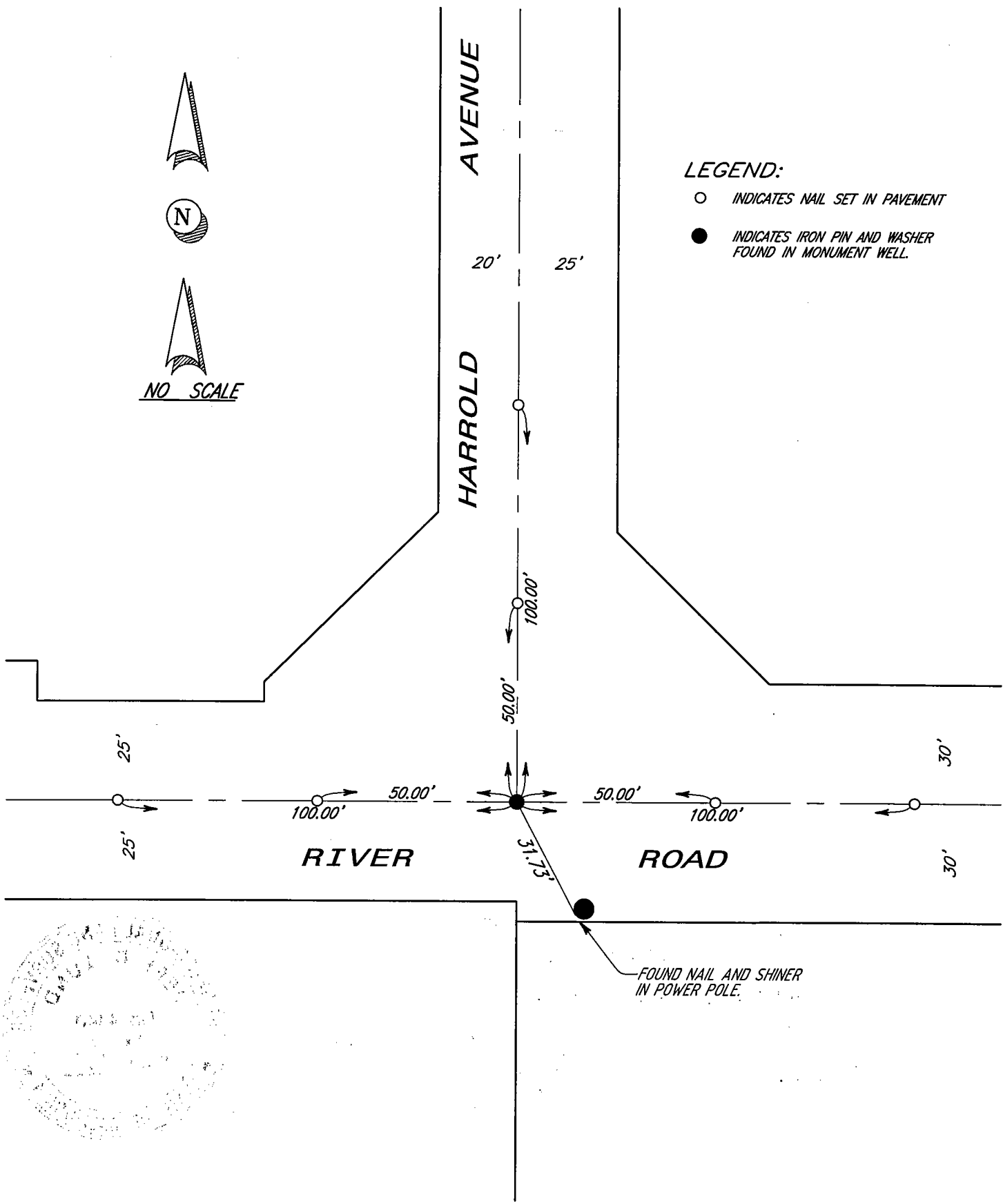
Title ASSISTANT COUNTY SURVEYOR

County Surveyor's Comment _____



(D.D. SHEET NOS. 62 + 63)

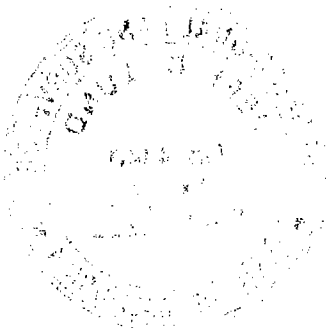
CORNER RECORD



LEGEND:

- INDICATES NAIL SET IN PAVEMENT
- INDICATES IRON PIN AND WASHER FOUND IN MONUMENT WELL.

NO SCALE



FOUND NAIL AND SHINER
IN POWER POLE.