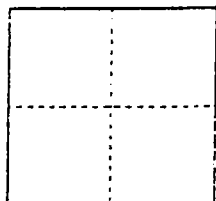


CORNER RECORD

Document Number 05-01  
County of San Joaquin, California

Brief Legal Description Lot 21 of Tract No. 688 Linden Terrace Unit No. 2 in Book of Maps and Plats, volume 17 Page 53.



CORNER TYPE

Government Corner  Control   
Meander  Property   
Rancho  Other   
Date of Survey May 19, 2004

COORDINATES (Optional)

N. \_\_\_\_\_  
E. \_\_\_\_\_  
Zone \_\_\_\_\_ NAD27  NAD83   
NAD83 Epoch \_\_\_\_\_  
Elev. \_\_\_\_\_  
Vert. Datum: NGVD29  NAVD88   
Meas. Units: Metric  Imperial

Corner - Left as found  Found and tagged  Established  Reestablished  Rebuilt

Identification and type of corner found: Evidence used to identify or procedure used to establish or reestablish the corner:  
Found the monuments off of a filed subdivision map.

A description of the physical condition of the monument as found and as set or reset:  
All monuments found were in satisfactory condition. Set 3/4" x 30" iron rods capped L.S. 7269.

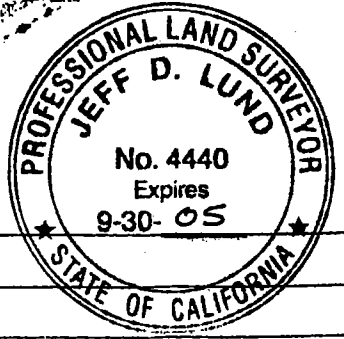
SURVEYOR'S STATEMENT

This Corner Record was prepared by me or under my direction in conformance with the Land Surveyors' Act on May 19, 2004.  
Signed [Signature] L.S. ~~or P.C.E.~~ Number 7269

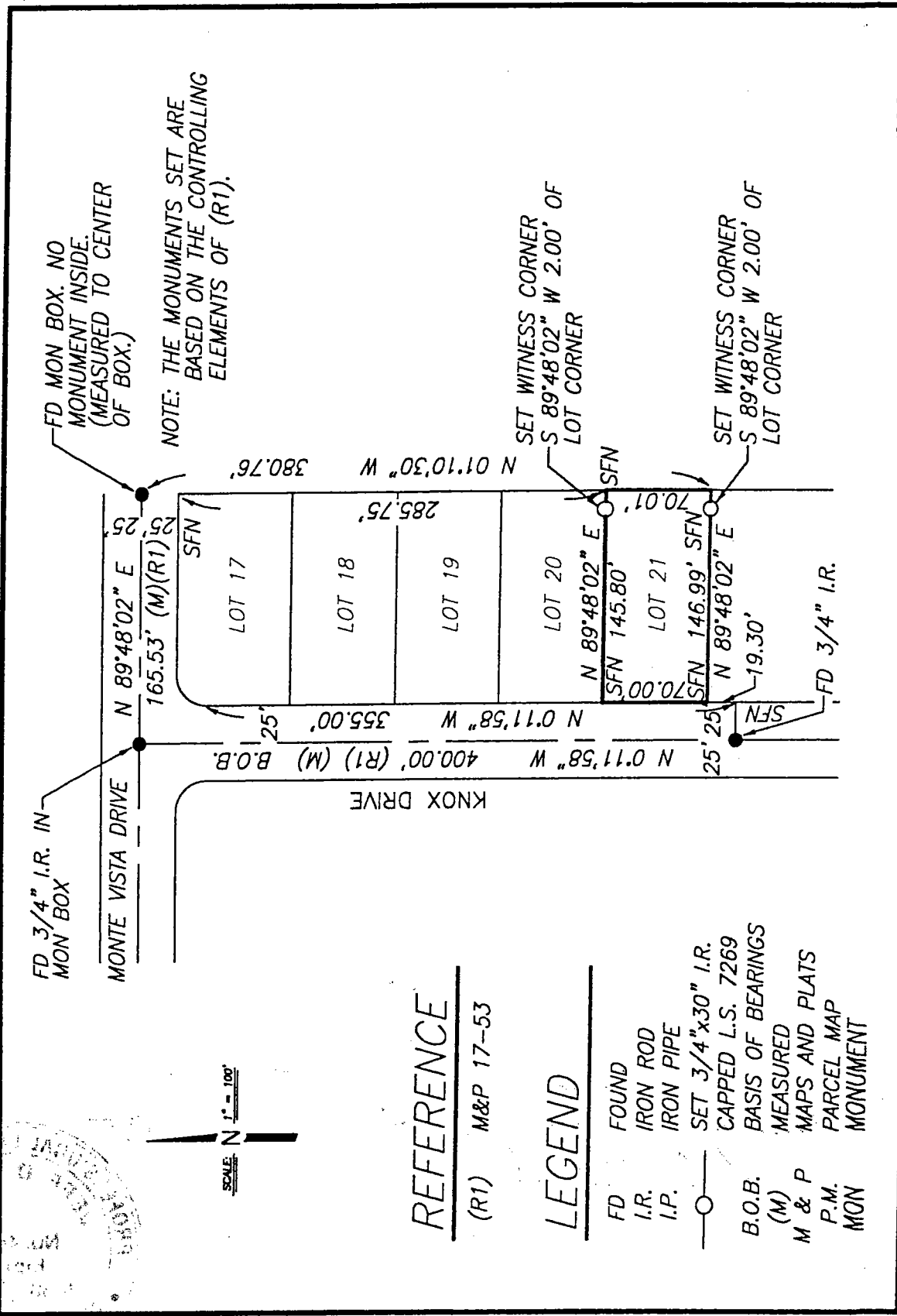
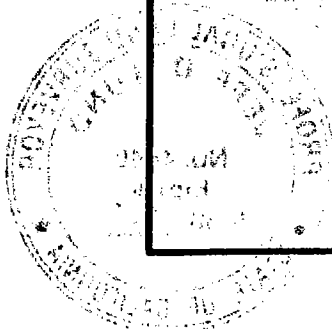


COUNTY SURVEYOR'S STATEMENT

This Corner Record was received JANUARY 10, 2005 and examined and filed JANUARY 13, 2005.  
Signed [Signature] P.L.S. No. 4440  
Title Assistant County Surveyor



County Surveyor's Comment This corner record is not in compliance with Board Rule 464(c) regarding filing within 90 days of date of survey.



SCALE N 1" = 100'

**REFERENCE**  
(R1) M&P 17-53

**LEGEND**

- FD FOUND
- I.R. IRON ROD
- I.P. IRON PIPE
- SET 3/4"x30" I.R. CAPPED L.S. 7269
- B.O.B. BASIS OF BEARINGS
- (M) MEASURED
- M & P MAPS AND PLATS
- P.M. PARCEL MAP
- MON MONUMENT